

WEATHER

	Min.	Max.	Precip.
Thursday, Nov. 10	37	63	0.63
Friday, Nov. 11	31	57	0.40
Saturday, Nov. 12	25	54	0.20
Sunday, Nov. 13	19	28	0.00
Monday, Nov. 14	28	35	0.00
Tuesday, Nov. 15	34	62	0.03
Wednesday, Nov. 16	33	54	0.04

ONE HUNDRED-EIGHTH YEAR—No. 23

14 Pages This Week

Plus 4-Page Supplement

CHELSEA, MICHIGAN, THURSDAY, NOVEMBER 17, 1977

15c per copy

SUBSCRIPTION: \$6.00 PER YEAR

The Chelsea Standard

QUOTE

"Children have more need of models than critics."
—Anonymous.

Wrestling Season Starts Next Tuesday

With a minimum amount of time spent in preparation, and with one of the smallest squads in a number of years, Chelsea High wrestlers will nevertheless be on the mats Tuesday, Nov. 22, for their season opener against Jackson Northwest.

Although only about 30 individuals will be competing for Chelsea this season, "the quality of the wrestlers should more than compensate for the lack in number," Coach Richard Bareis said. Chelsea will be led this season by tri-captains Mike Young at 132 lbs., Todd Headrick at 178 lbs., and Rick Beeman at 145 lbs. Young was league champ last year in his weight division, and placed fifth in the state meet. Headrick finished second in the league in his weight division last season, and was a state qualifier, while Beeman was a league champ and a regional qualifier.

Looking forward to improvement over last year's performance, are letter winning seniors John Bullock, Terry Thompson, and Leon Brown; juniors Tom Bareis,

Joe Keiser, Tony Wisniewski and Chuck Young; and sophomore Scott Dalton. JV wrestlers expected to challenge for varsity positions are Bart Bauer, Adrian Saarinen and Chris Umstead, while newcomers Bob Gottfried, Bob Beeman and Rick Risner also stand a chance to break into the line-up, according to Coach Bareis.

Other wrestlers this season will include sophomores Eric Gaken, Kevin Edict, and freshmen Andy Bullock, Bill Freeman, Eric Headrick, Brian Hughes, Chan Lane, Danell Lee, Jeff Osestoski, Jim Ruffins and Craig Sturgeon.

Coach Bareis predicts Chelsea will be able to "make a run for the league championship" this year, but figures Saline and possibly South Lyon will also be tough championship contenders.

"We should have some real strong weight classes, but we do have a few holes in the line-up that need to be filled," Coach Bareis concluded. "Our smaller weight classes are again going to be our inexperienced weight classes."



FESTIVAL OF LESSONS AND CAROLS: People from various Chelsea area churches, Chelsea High school, and the community at large, were at St. Paul United Church of Christ, on Old US-12, Tuesday to rehearse for the Dec. 11 Festival of Lessons and Carols. The festival, Chelsea's first community-wide Advent-Christmas program, is being sponsored by the Chelsea Ministerial Fellowship.

ship. The group above, which was formed as a community Senior Choir under the direction of June Warren, will perform "The Hallelujah Chorus" and "For Unto Us A Child Is Born," both from Handel's "Messiah," during the festival. The group practices every Tuesday night, 8 p.m., at St. Paul's church, and welcomes new members.

United Way Drive Soars Beyond \$33,463

The Chelsea United Way campaign has soared past its original goal of \$28,500. As of today, gifts and pledges of \$33,463 have been received.

The \$33,463 figure represents an all-time high in the history of the local organization, which raises funds for nine local charitable agencies and social organizations, as well as 23 state and national agencies.

"The campaign is far from over," Will Connolly, general campaign chairman, stated. "We are still awaiting reports from our group, led by David McLaughlin, now calling on doctors, dentists, lawyers and other professional

people in the community. One large industrial plant has not completed its campaign and 30 smaller plants and shops are still being solicited by United Way workers."

President Gerald Dresselhouse added, "We are hoping to pass the \$35,000 mark because every penny is needed by social agencies which are seriously pressed by inflation."

The total of \$33,463 resulted from the first five weeks of the Chelsea United Way effort; according to Dale Schumann, finance chairman. The previous record for a now calling on doctors, dentists, Chelsea United Way campaign was \$30,293.

Six Escape Death in Car-Tractor Crash

Five Chelsea area youths escaped serious injury Saturday evening, when their car collided with a tractor on Cavanaugh Lake Rd. The driver of the car was cited by Sheriff's deputies for failing to stop in a clear and assured distance.

Howard Schenk, 20, of 1715 Oak Rd., Grass Lake, was driving a 1970 Oldsmobile eastbound on Cavanaugh Lake Rd. at about 7 p.m., when the vehicle came over a crest and rammed into the rear of a tractor operated by James Heydlauff, 37, of 4011 Almbach Rd., Grass Lake. The tractor was also traveling eastbound on Cavanaugh Lake Rd.

According to Sheriff's deputies, the tractor was equipped with a red lamp and reflector mounted in the rear fender to assure its visibility.

Schenk and Connie Bentley, 16, 316 N. East St., a passenger in the car, were not injured in the accident. Two other passengers in the car, Tina Brown, 16, 421 W. Middle St., and Kim Parker, 24, of Stockbridge, were taken to Chelsea Medical Center for treatment and released, while the fourth passenger in the car,

Mark Baize, 21, of 140 Island Lake Rd., received emergency treatment at Chelsea Medical Center and was then transported to St. Joseph Mercy Hospital, Ann Arbor.

Heydlauff was transported to Chelsea Medical Center where he was listed in good condition Monday.

No Union Thanksgiving Service Plans

In a break with tradition, the Chelsea Ministerial Fellowship will not be sponsoring a special Union Thanksgiving Service this year, but will instead focus its efforts on the Festival of Lessons and Carols, a community-wide Advent-Christmas program planned for Dec. 11.

However, many local churches will celebrate the Thanksgiving holiday, Dec. 24, with special worship services for members of their congregations. The dates (Continued on page seven)

New Police Officer Joins Chelsea Force

Richard Walter, 24, a native of Milan, became the newest full-time addition to the Chelsea Police Department Monday, filling the vacancy created Nov. 1 by the resignation of Patrolman Roger Graves. Walter has been assigned to the department's night shift.

The new officer resigned as a part-time patrolman with Green Oaks township near Brighton to accept his new position. Prior to that, he was employed as a security guard by Meijer's Thrifty Acres in Ypsilanti.

He received his law enforcement training while attending the Southeastern Regional Criminal Justice Training Center, a police academy located in Ann Arbor.

As a local law enforcement officer, Walter says he sees his role as "helping the community in whatever it needs." Although he was reluctant to name Chelsea's biggest crime problem, explaining he had not been with the local department long enough to do so, (Continued on page three)

Area Deer Hunters Report Good Success

First to report hunting success locally on opening day of the firearms deer season Tuesday, Nov. 15, was Ernest Sell of Chelsea who shot an 8-point buck at 8:45 a.m., one hour and 45 minutes after the season officially got underway.

Sell bagged his deer while hunting near Waterloo with two companions, Tim Bareis and David Seyfried.

Driving up to the Standard office shortly after Sell had left was another successful deer hunter, Royce Leacox of Adrian, who also downed an 8-pointer.

Leacox shot his 175-lb. buck with a Browning automatic only 45 minutes into the deer season while stalking out the Oakes Campground area, near Mun-

ith. He plans to have the deer dressed and the head mounted, calling his trophy "a perfect 8-pointer."

The Adrian hunter chose to hunt in the local area on opening day, after being lured here by the prospect of heavy deer herds as reported by his brother-in-law, Joe Branham of 409 Grant St.

A third deer hunter to meet with success shortly after daylight Tuesday was 22-year-old Tim Wade, of 209 Park St. Wade shot a 7-point, 160-lb. buck at 7:30 a.m. while hunting in an area near Fletcher and Trinkle Rds.

Wade reported this was his first kill since he began hunting seven years ago, when he was 15 years old. He also plans to mount the head.

Tires, Wheels Stolen from Dealer Lot

Chelsea police are investigating the week-end theft of four tires and wheels from a vehicle parked in the parking lot of Lloyd Bridges Chevrolet, 1603 S. Main St.

According to police reports, four Uniroyal glass-belted tires and wheels for the tires, were removed from two 1/2-ton Chevy pickup trucks parked in the dealership lot.

The tires and wheels were taken sometime between 5 p.m. Saturday, Nov. 12, and 8 a.m. Monday, Nov. 14. Two of the tires, described as type G78-15, were valued at \$52 each, while the two remaining tires, described as type L78-15, were valued at \$62 each. Value of the wheels was estimated at \$26 each.

No suspects have been named in the case.

Hockey Team Loses To Jackson Western

Jackson Western hacked its way to a 4-3 victory over Chelsea Sunday in Jackson Ice Arena, coming from behind in the third period to govern most of the remaining hockey action.

"This game turned out the way Western wanted it, both in the final score and the way in which

the game was played," Chelsea team manager Richard Glasson noted.

Chelsea went out with a 2-1 lead in the first period as Pat Stevenson began the attack with an unassisted goal at 2:01 of the period, while Chelsea was short-

(Continued on page eight)

Basketball Team Scrimmage Tonight

Chelsea High cagers will get a jump on their season today, Nov. 17, 7:30 p.m., when the seniors take on the underclassmen in an exhibition game. The public is invited to attend the contest, billed as "Meet the Bulldogs Night," to be held in the high school gymnasium.

Along with giving Chelsea's basketball players a chance to test their skills before the season opens next week, today's game will

serve as a platform for the introduction of the 1977-78 varsity squad.

This season the varsity cagers will debut with a new coach, Robin Raymond. Preceding today's exhibition, he will run his 14-member team through several drills for the benefit of the audience.

Joining Coach Raymond court-side, will be Chelsea's JV coach, Jon Schaffner.

Girls Basketball Team Downs Lincoln, Saline

Chelsea High's girls varsity basketball team defeated a weak Lincoln team for the second time this season last week, and then traveled to Saline for a 63-37 sweep over the Hornets.

In the Lincoln game, Chelsea exploded with a 21-4 lead in the first quarter and held the lead with a 33-16 half-time score.

In the third period, the Bulldog defense kept Lincoln scoreless to finish on top of the final 53-23 decision.

Leading scorers for Chelsea were Nanette Push with 18 points; Penny Collinsworth, 16; Tracy Hawker, 6; Sheryl Kiel, 6; Shelley

Warren, 4; Lori Miles, 4; Theresa Thompson, 2; and Sue Heydlauff, 2.

High rebounders were Sheryl Kiel with 13, and Nanette Push with 9.

For the Chelsea-Saline encounter, the Hornets "came out fired up to avenge their loss to the Bulldogs three weeks ago," according to Chelsea Coach Cheryl Vogel.

As a result, Saline took a 12-7 lead in the first quarter; but the Bulldogs stopped the Hornets short in the second period, blanking out the opposition while scoring 22 of (Continued on page seven)

Debate Squads Fare Well in Tough Meet

Members of Chelsea High's debate squad traveled to Royal Oak Saturday to compete in what Coach William Coelius termed "one of the largest, most important tournaments of the year," the Royal Oak Kimball Tournament. Three Chelsea units were entered in the contest, and finished with primarily winning records.

"It was a good day for us," Coach Coelius reported. "Anytime we come up with more wins than losses, it's considered a good day."

In the tournament, which featured all teams harboring state championship hopes, Tammy Puglisi, a member of Chelsea's varsity unit, received the seventh-place individual speaking award. It was her second trophy in as many tournaments this season.

Joining Puglisi on the affirmative side of Chelsea's varsity unit was Julie Prohaska, while arguing the negative were Andy Anderson and Caroline Meyer. They finished the day with a 4-2 record.

Also wrapping up their tournament performance with a 4-2 record were members of Chelsea's JV unit. The unit consisted of Mike Waidyke and Tim Stubbs on the affirmative, and John Koepel and Tom Severn on negative.

Chelsea's novice unit, with Jackie Lamb and David Baldwin on affirmative, and Janet Walz, Dace Ertel and Shelley Springer (Continued on page seven)

Need Early Copy For Next Week

Because of the Thanksgiving Day holiday on Thursday, Nov. 24, The Chelsea Standard will be in the mail Wednesday, Nov. 23.

All deadlines for that issue are advanced one day.

Display advertising copy must be in our office as early as possible Friday, Nov. 18. The Standard office will be open Saturday, Nov. 20, to accept news copy.

Want ads will be accepted until 5 p.m. Monday, Nov. 21.



WAY OVER THE TOP! The Chelsea United Way campaign has passed the 100% mark with gifts and pledges of \$33,463 in the first five weeks. General Chairman Will Connolly looks at the full

thermometer on the post office lawn and wonders if more tubing should be added at the top. The 1977 fund is now at 117% of goal.



TAMMY PUGLISI, a member of Chelsea High's 1977 debate squad, displays the individual speaking award she received last Saturday at the Royal Oak Kimball Tournament. The varsity debater placed seventh in individual speaking competition, earning her second successive honor as an indi-

vidual debater this season. Puglisi and Julie Prohaska formed the affirmative side of Chelsea's varsity debate unit, while Andy Anderson and Caroline Meyer argued the negative. The varsity unit finished Saturday's tournament with a 4-2 record.

Established 1871
The Chelsea Standard Telephone 475-1371
 Excellence Award By Michigan Press Association
 1961-1962-1963-1964-1965-1966
 Walter P. Leonard, Editor and Publisher

Published every Thursday morning at 300 North Main Street, Chelsea, Mich. 48118, and second class postage paid at Chelsea, Mich., under the Act of March 3, 1879.

Subscription Rates (Payable in Advance)
 In Michigan: Outside Michigan:
 One Year\$6.00 One Year\$8.50
 Six Months\$3.50 Six Months\$4.50
 Single Copies\$.20 Single Copies\$.25

MEMBER
NATIONAL NEWSPAPER ASSOCIATION
 National Advertising Representative:
 MICHIGAN NEWSPAPERS, INC.
 257 Michigan Ave.
 East Lansing, Mich. 48823

JUST REMINISCING

Items Taken from the files of The Chelsea Standard

4 Years Ago...

Thursday, Nov. 22, 1973—

Despite pre-season predictions that this year's deer outlook was the best in five years, area conservation officer Robert L. reports that he has seen only "half a dozen deer killed so far at the most."

A lot of the dilemmas that Chelsea schools district taxpayers feel about committing themselves to a bonding proposal the size of the \$4.8 million issue to be considered Dec. 17 should be at least partially relieved by a simple series of comparisons. For instance, debt retirement has stood for the past two years at its lowest level in nearly 20 years.

Basketball is the word over at Chelsea High school right now, as the three squads have been chosen for the upcoming season and practices are in full swing. The varsity team will be coached by Tom Balistrere and led by senior co-captains Marv Guster and Tim Treado.

14 Years Ago...

Thursday, Nov. 21, 1963—

Announcement was made this week that the drive for funds to complete payment of the \$2,500 purchase price of the former Beach rural school by Chelsea Co-op Nursery is now completed. The past week-end, a sign designating the structure as Florence Howlett Memorial Building was installed across the front.

Penny Eisenbeiser, who attended Interlochen Music Camp last summer on a Kiwanis scholarship, and Lynn Harvey who attended Wolverine Boys' State at Michigan State University, East Lansing, in June, were guests of the Kiwanis Club at Monday's regular dinner meeting.

Eileen B. Lang, a missionary nurse in India for more than 30 years, will speak Friday, at 7:30 p.m., at the Congregational church.

She is sponsored by the Women's Fellowship and the church Benevolence Committee.

A. James Smith of Tecumseh, who is the architect for the new St. Paul's church construction, was the guest speaker at the Chamber of Commerce dinner meeting Tuesday evening in the dining room of the Congregational church. He discussed future community planning, which he recommended for Chelsea, particularly in the downtown area and in the industrial field.

24 Years Ago...

Thursday, Nov. 19, 1953—

With the increasing popularity of diesel locomotives on the New York Central Railway system, the track watering pans at Four Mile Lake were declared to be non-essential and ceased operations. During the steam locomotive era, water in the pans was kept from freezing during the winter by passing live steam through tubes imbedded in the pans.

At Tuesday evening's football banquet, Toastmaster Gene Shroyer introduced John Magiera, assistant coach, Jack Musser, Principal John Griffin and Mrs. Basted, all of whom gave short talks. Bob Bertke and Don Proctor, this year's co-captains, were introduced, and they in turn introduced Phil Bareis and Bob Keezer as next year's captains.

Ishmael Picklesimer of North St., and Gerald Carr of the Cassidy Lake area, shared honors as the first stay-at-home hunters in this vicinity to get their deer this season.

The Chelsea Agricultural Schools Board of Education has secured an option on 14 acres of the Vickers, farm, directly south of the Athletic Field, as a site for a future high school building. The property is in the Washington-Flinders street area. Details of the agreement with Lionel Vickers, owner of the property, state the price to be \$14,000.

34 Years Ago...

Thursday, Nov. 18, 1943—

About 50 members and friends of the Great Lakes Mink Association met at the Allen Hitchcock mink ranch in Waterloo Sunday. (Continued on page seven)

MICHIGAN MIRROR

By Warren M. Hoyt, Secretary, Michigan Press Association

Cities Expect Help

Final approval of legislation prohibiting financial institutions from denying or discriminating against home loans in certain areas is hoped to breathe new life into decaying cities.

The new act prohibits lending institutions from "redlining" specific areas within which no loans would be approved or specific discriminatory terms would be offered.

Redlining by banks and insurance companies has contributed to the decline of older parts of cities through mortgage and in-

surance denial or discrimination. Loan refusals in certain areas based on geographic locations, age of structure and/or ethnic or racial composition is specifically prohibited. Uniform qualifications for a mortgage would be solely based on the credit worthiness of the applicant.

As an enforcement guarantee, the act requires lending institutions to disclose where loans are being made, how many loans are being made and the amounts of the loans.

Lenders must also disclose the average down payment, the aver-

age terms of loans, the number of loan applications denied and the specific reasons for denials.

Increasing Unemployment Rates

The cost of doing business in Michigan will continue to increase as of Jan. 1 under priority legislation sailing through the legislature.

However, don't grab recall petitions because the cost of doing business would go up even more if the legislature did not act to increase unemployment rates.

Michigan is in debt to the federal government for \$624 million borrowed to maintain unemployment benefits to the jobless during the recent recession.

Facing a Nov. 10 deadline to revise the unemployment compensation system to repay the funds over the next four years, the legislature is nearing completion or legislation to increase the tax levied on the first \$5,000 of wages per employee compared to the current \$5,400 level.

Barring any legislative action the federal tax would be automatically increased to balance the books over the same four-year period.

Without state action, the federal government would impose a credit reduction through 1981. It would cost employers from \$12.60 per employee in 1977 and escalate to \$30 per employee in 1981.

The legislation has been affectionately labeled the "damed if we do and damed if we don't bill."

The measure is designed—similar to arguments applied to the Single Business Tax Act—to make every business share the burden to some degree while providing a healthy business climate. It also would provide an additional \$250 to \$300 million for the Michigan Employment Security Commission to maintain the state's system.

The new formula regards the more "stable" employers in determining the tax range from from one to nine percent. Season-

remote control. He said our Defense Department has found out that the Russians have made a space satellite that can shoot down another satellite, so natural we have got to go to work on an anti-anti-satellite. And then they'll come up with a space-to-space anti-anti-anti weapon, and so on, Bug said. The good news is if we can't do away with war, at least we can get it out of this world. If the cold war gets hot, we can send up 1,000 of them remote-control satellites a piece and settle the issue by watching the war on television.

The fellers agreed that's even better than the bomb that kills everybody, but don't tear up anything.

Yours truly,
 Uncle Lew

The first public employment was established in New York City in 1834, according to "Labor Firsts in America," a publication of the U.S. Department of Labor.

Commuter Train Gets Modern Equipment

Amtrak's state-supported "Michigan Executive," providing commuter service to Detroit from the west, will be switched to modern Amfleet coach service starting Nov. 7.

Three 85-foot-long liners have replaced four smaller, obsolete, 77-year-old cars inherited from bankrupt railroads. The new Amfleet train includes a new F40 locomotive. The coaches, increasing seating capacity by 24 per cent, feature acoustical and thermal insulation, an electric heating and air conditioning system and a new coil and air suspension system.

Approximately 270 passengers ride the train daily to Detroit, from Ypsilanti, Ann Arbor, Chelsea and Jackson.

The "Executive," which began service in January, 1975, is supported by approximately \$250,000 a year, allocated by the State Highway Commission.

With the recent expansion of connecting shuttle bus service in Detroit, "Executive" passengers may take a shuttle bus from trainside directly to the new Renaissance Center and to other major points in downtown Detroit. Buses return passengers from the center and downtown to the train in the afternoon, in time for departure.

nal and unstable employers can expect to shell out for more unemployment benefits under the revision.

Increasing Prison Facilities

With swelling populations in state correctional institutions, the state has acquired one additional facility and Governor William Milliken recently recommended takeover of the Detroit House of Correction (DeHoCo).

Earlier, the state, following legislative approval, acquired the former St. Augustine Seminary in Allegan county to convert to a minimum security facility. A total of \$7.1 million was appropriated for the purchase and site improvements, furnishings and security measures.

Milliken, recommending the DeHoCo purchase, said the facilities are not suitable for long-term occupancy, but they will provide an interim solution to part of the prison overcrowding crisis.

The 600-bed prison would cost the state about \$5 million.

Purchasing and renovating current facilities has proven to be less expensive as current estimates of new construction average \$50,000 per cell.

Howell Livestock Auction

Starts 1 p.m. Every Monday
 Phone 546-2470 Bim Franklin

The Wise Owl Says Ship to Howell
 Market Report for Nov. 14

CATTLE—

Bulk Cattle-Choice Steers, \$11 to \$12.50
 Few High Choice Steers, \$12.50 to \$13
 Cattle-Choice Heifers, \$7 to \$11
 Fed Holstein Steers, \$7 to \$11
 Fed Beef Cows, \$20 to \$23

COWS—

Heifer Cows, \$27 to \$30
 2½ Commercial, \$23 to \$27
 Canner-Culler, \$18 to \$21
 Fat Beef Cows, \$20 to \$23

BULLS—

Heavy Bologna, \$30 to \$33
 Light and Common, \$30 and down.

FEEDERS—

400-600 lb. Good-Choice Steers, \$38 to \$40
 600-800 lb. Good-Choice Steers, \$35 to \$38
 300-600 lb. Good-Choice Heifers, \$27 to \$32
 500-600 lb. Holstein Steers, \$27 to \$30
 500-800 lb. Holstein Steers, \$22 to \$27
 Common and medium, \$22 and down.

CALVES—

Prime, \$60 to \$76
 Good-Choice, \$50 to \$60
 Heavy Yearlings, \$40 to \$50
 Cull & Med., \$20 to \$40
 Calves going back to farms sold up to \$15

SHEEP—

Woolled Slaughter Lambs, Spring: Choice-Prime, \$50 to \$52
 Heavy Yearlings, \$40 to \$50
 Slaughter Ewes, \$16 to \$20
 Feeder Lambs, All Weights, \$50 to \$55

HOGS—

200 to 240 lbs. No. 1, \$39 to \$39.80
 200-250 lbs. No. 2, \$38 to \$39
 Heavy Hogs, 250 lbs. up, \$33 to \$38
 Light Hogs, 200 lbs. down, \$30 to \$37

SOY—

Heavy Light, \$32 to \$33
 200-250 lbs., \$32 to \$33
 500 lbs. and up, \$31 to \$33

BAKES and STAGS—

All Weights, \$25 to \$32

Feeder Pigs—

Per Head, \$15 to \$36
 Est. 40 lb. pigs, \$30 to \$33

HAY—

1st Cutting, per bale, \$1.00 to \$1.50
 2nd Cutting, per bale, \$1.50 to \$1.90

STRAW—

Per Bale, 80c to \$1.15

COWS—

Tested Dairy Cows, \$300 to \$600
 Tested Beef Type Cows, \$200 to \$400

retirement accounts

UPDATE

1 All deposits can earn 7¾% (effective annual rate 8.03%) for three years or more. You pay no income tax on deposits or interest until retirement.

2 You can open an IRA or KEOGH Retirement Account with as little as \$1.00 and add to it throughout the year.

3 Now, one easy to understand passbook will contain all of your retirement transactions.

Our tax deferred retirement accounts are now better than ever because you can earn the big 7¾% rate on all deposits. This means that anyone who is self-employed or not covered by any other retirement plan can make deposits throughout the year of \$50, \$100 or whatever, and earn 7¾% interest from the day of deposit. You don't have to wait until you have accumulated \$1000 or more to earn our top rate. So your money earns more, you will have more at retirement, and your monthly retirement income will be greater. Total deposit for the year, of course, is still limited to 15% of earned income, or a maximum \$1500 with IRA, and \$7500 with KEOGH.

You pay no income tax on your deposits to IRA and KEOGH nor on the interest earned until your retirement at which time you will probably be in a lower tax bracket. Withdrawals can be started at age 59½. Withdrawals prior to age 59½ are subject to substantial penalty as required by federal regulations.

To simplify your record keeping, we now provide you with just one passbook, colored green for growth, and all deposits and interest are entered in it. You can trade in your present passbook for a new one now at any AAFS office. For complete details, stop in any Ann Arbor Federal Savings office, or call 769-8300.

AAFS

Please send free brochure giving full details on your tax deferred retirement plans.

Name _____
 Street _____
 City _____ Zip _____

ANN ARBOR FEDERAL SAVINGS, 401 East Liberty
 Ann Arbor, Michigan 48108 769-8300

ANN ARBOR FEDERAL SAVINGS

11 OFFICES TO SERVE YOU IN: ANN ARBOR, BRIGHTON, CHELSEA, DEXTER, MANCHESTER, SALINE, YPSILANTI
 Member FSLIC

OPEN THANKSGIVING DAY

Make Your Reservations Now!

Don't Forget...
OUR LUNCH BUFFET
 Serving Until 4 p.m. Daily.

OPEN 11 a.m. to 11 p.m. Monday thru Thursday
 11 a.m. to Midnight Friday and Saturday
 12 Noon to 9 p.m. Sunday

SCHUMM'S

1620 M-52 PHONE 475-2020



SANNES-RENTZ: After a short honeymoon trip, the new Mr. and Mrs. William Arthur Rentz will reside in Pinckney. The couple was married Nov. 5 in Chelsea's First Congregational church. The bride, Kathryn Louise, is the daughter of Mr. and Mrs. Albert J. Sannes of 223 Lincoln St., and the bridegroom is the son of Mr. and Mrs. Arthur Rentz of Pinckney.

Fran Coy's 665-7207
WE RECOMMEND
PROFESSIONAL HAIR CARE PRODUCTS
118 S. Wacker, between Jackson & Liberty
Open Monday through Saturday 9 a.m. to 3 p.m.

We Represent the Following Companies:

- ★ TRIFARI and WINARD JEWELRY
- ★ BALDWIN BRASS
- ★ ROYAL HOLLAND PEWTER and DELFT
- ★ FENTON ART GLASS
- ★ WESTMORELAND
- ★ WM. FRASER STAINLESS STEEL

We stock a complete selection of books for the entire family.

LAY-AWAYS WELCOME VISA & MASTER CHARGE WELCOME

Calico Cat
BOOK AND GIFT SHOPPE
110 E. MAIN ST., MANCHESTER PH. 428-7453

Tell Them You Read It In The Standard!

BULOVA ACCUTRON®

YOUR CHOICE: \$75.

Until now, for \$75.00 you could afford only an ordinary watch. Now, for \$75.00, you can afford Bulova Accutron, the time-tested electronic watch that never needs winding.

And you have a choice of styles. For men and women. Select yours today.

A. Stainless steel, white enamel dial, \$75.00
B. Silver-tone finish, blue dial and strap, \$75.00
C. Silver-tone finish, silver dial, black strap, \$75.00
D. Stainless steel, blue dial, black strap, \$75.00

WINANS JEWELRY

Child Study Club Plans Dec. 13 Christmas Party

Chelsea Child Study Club met Tuesday, Nov. 8 at the home of Margot Barlow, with 21 members, four associate members and four guests.

Guests for the evening were Duwanna Bertke, Ruth Macny, Helen Schumann and Bonnie Murray.

After a short business meeting, the ladies enjoyed a talk by Will Connelly on "Keeping Trim After 30."

Co-hostesses for the meeting were Nancy Erickson and Louise Likavek.

Next meeting will be a Christmas Party and gift exchange on Dec. 13, 7:30 p.m., at the home of Anne Steinaway, for members only.

Heard-Crout Engagement Told

Mr. and Mrs. Hubert L. Heard, of 1478 Manchester Rd., have announced the engagement of their daughter, Audrey, to the Rev. Joe Crout, son of Nathaniel A. Crout and Mrs. Mary Crout, both of Ypsilanti. The bride-elect is a 1974 graduate of Chelsea High school and is employed by Rockwell International, Chelsea. Her fiancé is employed by GMC's Hydramatic Division, Ypsilanti. A Feb. 18 wedding is planned.

Town & Country Women's Club Plans Christmas Party

Town and Country Women's Club met at the home of Bobbie Hoffenbecker Tuesday evening with Karen Street serving as co-hostess.

After a business meeting, Sherry Lawton conducted a ribbon wreath workshop. Each member took home a finished product.

Next meeting will be a Christmas party, Dec. 13, 8 p.m. at the home of Grace and Richard McCalla.

Waterloo Methodist Women's Society

Waterloo Village United Methodist Women's Society met Nov. 9 at the home of Jessie Schulz for a pot-luck dinner at noon.

The business meeting was opened with a Thanksgiving prayer by the president, Eloise Schulz. Six members and one guest answered roll call.

Paper angels were made for Chelsea Social Services, and plans were announced to begin saving Campbell labels and stamps.

Shirley Case presented a Thanksgiving offering and read 10 with Margo. A silent prayer followed, with members answering, "We praise Your name, O Lord," in between.

The meeting closed with a benediction.

The Society will meet again Nov. 22, 2:30 p.m., at the home of Eloise Schulz. The Christmas meeting will be Dec. 14, also at the home of Mrs. Schulz.

Please Notify Us In Advance of Any Change in Address



Mr. and Mrs. Alvin Ernst

Joan Ottoman, Alvin Ernst Wed At St. Thomas Lutheran Church

Joan Ottoman and Alvin Ernst were married Friday evening, Nov. 11, in St. Thomas Lutheran church on Ellsworth Rd.

The Rev. Jerome Dykstra performed the 6:30 p.m. ceremony uniting the daughter of Mr. and Mrs. Joseph Ottoman, of Chelsea, and the son of Mr. and Mrs. Clayton Ernst of Ann Arbor.

Organist for the occasion was Mrs. Diane Haab of Chelsea, while guitarist and vocalist was Mrs. Jean Welton of Lansing.

As the bride approached the altar, she was wearing an imported silk organza and Venice lace gown with lantern sleeves and a circular skirt, trellised in lace. Her chapel-length veil was attached to a camelot cap and edged in lace. She carried a bouquet of ivy, carnations and roses.

Maid of honor was JoAnn Alber of Chelsea. She appeared in a light blue polyester gown trimmed in navy blue velvet, and held a bouquet of white and yellow daisies mixed with baby's breath.

Serving as bridesmaids were Karen and Diane Ottoman, both of Chelsea, and both sisters of the bride. Their gowns and flowers were identical to those of the maid of honor.

Best man was Gary Ernst of Ann Arbor, brother of the bridegroom. Groomsmen included Bruce Manny of Ann Arbor, brother-in-law of the bridegroom, and Roger Ottoman of Chelsea, brother of the bride. Marvin Feldkamp was usher for the wedding.

Attending as flower girl was Shawn Manny, niece of the bridegroom. She wore a blue dotted-swiss dress, and carried a basket of yellow and white daisies.

Mrs. Ottoman, mother of the bride, chose a pale green gown, accented with a corsage of white carnations and a single pink rose, while Mrs. Ernst, mother of the bridegroom, appeared in a bronze-colored gown and a corsage of white carnations and a single yellow rose.

Following the wedding, a reception was held at the Holiday Inn, Ann Arbor. Lorrie Flinn was in charge of the guest book, while Mrs. Bonnie Ernst and Mrs. Betty Spicer, aunts of the bride and bridegroom, cut the wedding cake.

Upon their return from a week-long wedding trip to Florida, the newlyweds will reside in Ann Arbor.

Girl Scouts Troop 82

On Monday, we welcomed two new girls to our troop. We also made plans for our next five meetings, and played some games.

Linda Weidmayer, scribe.

WHY SHOP THE BIG GUYS?
We've Got the Same Stuff for Less!

CAR STEREO AM-FM 8-TRACK
Reg. \$99.95 - NOW \$69.95

THE MUSIC HUTCH
8107 Main St., Dexter Ph. 426-4380

VFW Auxiliary Hosts State, District Officers

A regular business session of the Ladies' Auxiliary to Chelsea VFW Post No. 4076 was held Monday, Nov. 14, with 12 members and two guests in attendance.

Betty Ellsworth, sixth district president, visited the local Auxiliary as its inspecting officer, accompanied by Mildred Sebrall, state conductress. Both women are members of VFW Auxiliary No. 701 in Lansing.

Reports on the Oct. 12 State School of Instruction, held in Hamburg, were given by local Auxiliary members who participated in the event. They included Bessie Sharp, Betty Smith, Lucy Platt, Gertrude O'Dell, Mary Kniss and Eulahlee Packard.

A public hearing was held recently in Lansing regarding the rules and regulations of child care institutions. The VFW is very concerned that the Michigan Department of Social Services is trying to put the VFW National Home in Eaton Rapids under its jurisdiction.

VFW Auxiliary members attending the hearing from Chelsea were Lucy Platt, Betty Smith and Mary Kniss. They reported on the hearing.

Representatives from the local Auxiliary also attended the sixth district meeting in Fowlerville on Sunday, Oct. 13, and delivered reports on the proceedings to the general membership. Chelsea's representatives were Eulahlee Packard, Mary Kniss and Lucy Platt.

Auxiliary members then proceeded to allocate \$10 to the VFW National Home Christmas Party. Material for a new altar cloth is being furnished by Eulahlee Packard, and Elizabeth Smith will assemble it for the Auxiliary.

Americanism chairperson, Eulahlee Packard, announced to members that a flag had been presented to Cub Scout Pack No. 435, and another one to the religion-oriented Pioneer Girls, on Oct. 27. Mrs. Packard then gave a brief report of the Veteran's Day celebration she attended in Carleton.

Lucy Platt, Voice of Democracy chairperson, noted that the contest in area schools is progressing successfully.

In other upcoming events, the

Carl's Cleaning Service

521 S. Main St. Chelsea, Mich.
Professional Carpet & Upholstery Cleaning
BUSINESS - RESIDENTIAL
FREE ESTIMATES Phone 475-8007

TOUCH OF GLASS
A Style for Any Occasion!
1196 M-52
Phone 475-1591

Open Tues., Wed. 9 to 4
Thurs., Fri. 9 to 7
Saturday 9 to 4

Men's & Women's Cuts & Styles
Senior Citizen Discounts every day.

every home needs a La-Z-Boy®

... and we have lots of La-Z-Boys in our store looking for a home ...

all at low LOW LOW LOW discount prices

Make your selection and lay away now for Christmas ... wall recliners, racker recliners, swivel rockers

Merkel
HOME FURNISHINGS
Open Monday & Friday until 9 p.m. Ph. 475-8621

New Police Officer Joins Chelsea Force ...

(Continued from page one)

Walter theorized that "a lack of respect for one's fellow man" was the source of most crime problems today.

Walter, who currently lives in Detroit, said he applied for a job with the local police department because he wanted to move to a rural setting. "For that reason, I chose Chelsea," he concluded. He is planning to move here sometime before the end of December with his wife, Kathy, and their 8-month-old son.

Standard Want Ads will sell your unused items quickly and economically. Just call 475-3171.

CAROL'S CUTS
328 Wilkinson
CAREFREE STYLES FOR FALL
475-7094
Appts. Only

Carl's Cleaning Service
521 S. Main St. Chelsea, Mich.
Professional Carpet & Upholstery Cleaning
BUSINESS - RESIDENTIAL
FREE ESTIMATES Phone 475-8007

Ricardo's featuring **REDKEN®**

MEN WOMEN

HOURS
MON., 9-5 TUES.-FRI., 9-8
SAT., 9-2:30 Closed Sun.

FOR APPOINTMENT Call 475-1671

107 N. MAIN • CHELSEA

WINTER POTATOES
Top Quality - Good Keepers

ONIONS SQUASH
By the Bushel

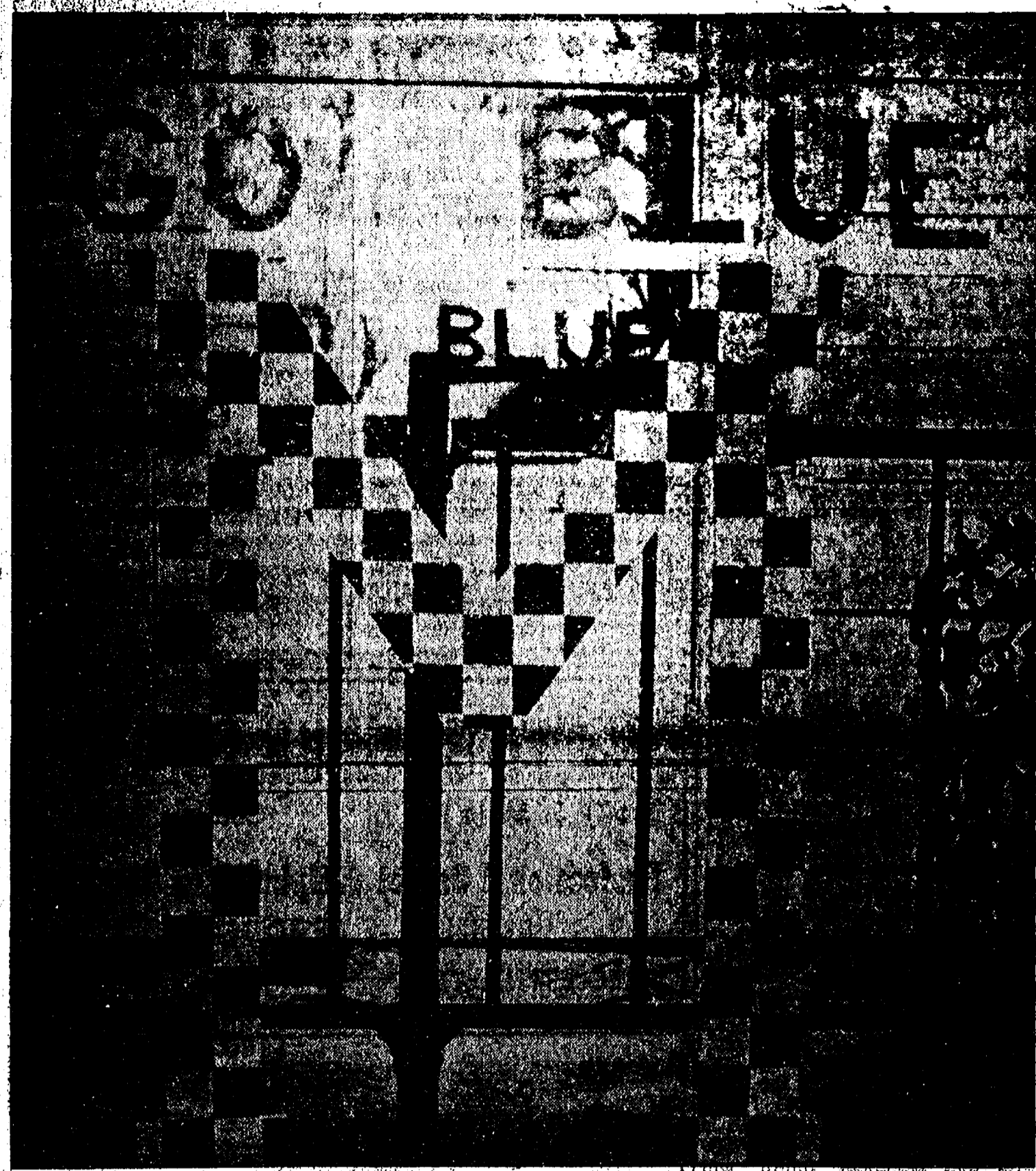
GRAVE BLANKETS CEMETERY VASES

Semi-Load of Indian River Citrus Arriving Soon.

Xmas Trees Dec. 1st.

FARM BAKED DONUTS - BREAD

GEE FARMS
PHONE (517) 769-6772
14928 BUNKER HILL RD. STOCKBRIDGE



GO BLUE: Football fever got the better of Ed Harook of North St. last week, when he chopped up his ping-pong table to construct the big "M" and "Go Blue" sign now anchored to his front porch. With his maize and blue checkered "M", Harook hopes to ward off the scarlet and grey invasion Saturday, when Ohio State comes to Michigan to determine this year's Rose Bowl contender.

Fitness Class Designed for Senior Citizens

Classes in fitness, drama, and square-dancing, designed specifically for senior citizens, are being held weekly at the Chelsea Nutrition Program for the Elderly, 400 Congdon St. Sponsored by Washtenaw County Parks and Recreation, all Chelsea senior citizens are invited to participate. Tuesday of each week, beginning at 11:30 a.m., Helen Courtwright, senior citizen physical fitness instructor, conducts a fitness class for all persons present. The class is a series of exercises tailored to the over-60 group, and arranged in degrees of difficulty so that everyone may participate in at least some of the exercises, and most can go through the entire program.

Girls Basketball Team Wins Two

(Continued from page one) their own points. Chelsea advanced to a 29-12 half-time lead. The Bulldogs extended their advantage to 48-26 by the end of the third quarter, and finished the game with the 63-37 triumph. High scorer for Chelsea was Sheryl Kiel with 20 points. She was followed by Nanette Push with 15; Penny Collinsworth, 15; Shelley Warren, 7; Theresa Thompson, 3; Sue Heydlauff, 2; and Tracy Hawker, 2. Shelley Warren grabbed 16 rebounds to lead the Bulldogs, while also contributing to Chelsea's rebounding efforts were Sheryl Kiel, Nanette Push and Sue Heydlauff. Telephone Your Club News To 475-1271

Special Olympics Team Nudged in Floor Hockey

Chelsea's Special Olympics team, coached by Nancy Cooper and Debbie Bergman, traveled to High Point Center, Ann Arbor, Friday, Nov. 11, to compete in a floor hockey tournament with Livonia and the High Point host team. High Point defeated Livonia, 18-14, in the morning game. Chelsea was scheduled to play Livonia in a follow-up afternoon game, but because a Livonia player had suffered an injury in the morning game, the team was forced to leave the tournament early.

34 Years Ago...

(Continued from page two) Nov. 14, for a field day and educational meeting. Among subjects brought up for discussion was that of the GPA on ranches and milk. Announcement is made by village officials that they have given the contract for taking fire and police calls to Lillian Foster. Attention is called to the fact that the fire and police numbers are on the front of the telephone directory. Exceeding the record show of last year, the 14th annual Junior Livestock show scheduled at the Detroit stockyards Dec. 7-9, will place 437 fat lambs and steers before the judges. Six Chelsea youths will compete, including Jane Downer, Charles Downer, Doris Downer, and Loren Koenig with lamb entries; and Armin Huehl and Joe Merkel Jr. with steer entries. Paul W. Schneider of Chelsea has been elected to Omicron Delta Kappa, national men's honorary fraternity at Albion College, where he is a senior. Membership in this group is a high distinction since it is granted on the basis of scholarship, leadership, character, and distinguished attainments in college and community life.

Debtors Score...

(Continued from page one) on negative, returned from the tournament with an evenly split, 3-3 record. All units argued the national debate topic, "Resolved: That the federal government guarantee comprehensive medical care for all citizens of the United States." Chelsea debaters will again demonstrate their verbal abilities Saturday, Nov. 19, when they host a day-long league meet at Chelsea High school. The public is invited to witness the competition which will feature Brighton, Novi, Ann Arbor Greenhills, Saline, Columbia Central, and Jackson Parkside, as well as Chelsea.

Low birthweight is the most common birth defect, reports The National Foundation-March of Dimes. In the United States, the incidence of low birthweight is nearly 15 percent higher than in Great Britain, about 27 percent higher than in Japan and 61 percent higher than in Finland.

Dana Retirees Feted

Chelsea Dana Corp. employees held a retirement party last Saturday at the UAW Hall on Main St. to honor five of their co-workers, who together represent 132 years of service to the local firm.

Honored at the celebration were Richard Bennett, Kindle Howard, Virginia King, Paul Schramm and Betty Smith.

Sponsoring the dinner were six Dana women, P. Salyer, J. Schulte, C. Risner, S. Gladstone, B. Quig and E. Clark. Special speaker, plant manager.

During Bollett's address, he commented on the number of years the five retirees had worked at Dana, and noted that all would be greatly missed. Bollett then asked each retiree

what he or she planned to do on retiring and the majority responded by saying they were going to visit other parts of the United States, as well as some overseas countries.

Saturday's celebration was the third retirement party to be held for Dana employees. According to Al Schmidt of the plant's personnel department, more are planned in the future.

Church Services

(Continued from page one) and times for individual church services may be found in this week's "Church Calendar" listing.

Standard Want Ads will sell your unused items quickly and economically. Just call 475-3171.

REPLACE BROKEN GLASS IN STORM DOORS

with **Warp's FLEX-O-GLAZE**

TOP QUALITY ACRYLIC PLASTIC

Glass Clear • Non-Yellowing • Shatterproof

Flex-O-Glaze comes in standard sheet sizes. Can be cut, scored or sawed. Has no sharp cutting edges. Easy to cut, score or saw. Comes in standard sheet sizes.

Flex-O-Glaze is the Original Safety Approved Plastic Glazing. Made Full Weight—Guaranteed—Top Quality.

WARP BROS. Chicago 60651
Pioneers in Plastics Since 1925

At Hardware, Lumber and Building Supply Stores

REPLACE BROKEN GLASS IN STORM DOORS

with **Warp's FLEX-O-GLAZE**

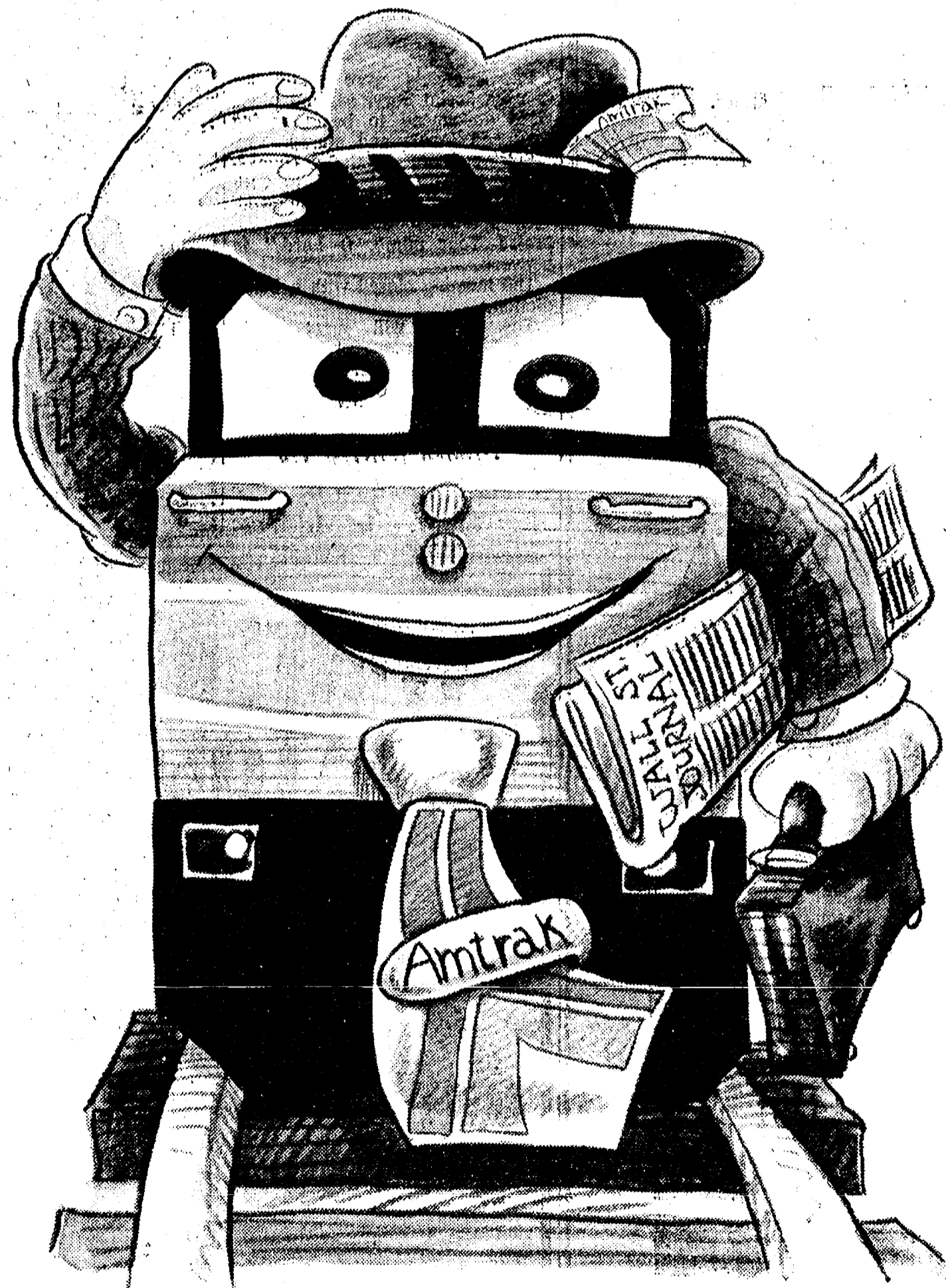
SAFETY ACRYLIC PLASTIC

WARP BROS. Chicago 60651
Pioneers in Plastics For Over 50 Years

AVAILABLE AT **GAMBLES**
110 N. Main St. Ph. 475-7472

Please Notify Us of Any Change in Address

AMTRAK'S GOT A NEW MICHIGAN EXECUTIVE.



We're talking about the new Amfleet trains running between Jackson and Detroit. These new trains will turn ordinary train travel into a luxurious adventure. The "Michigan Executive" Amfleet looks as good from the inside as it does outside. We have all the most modern equipment with everything that makes traveling what it should be, comfortable and fun. There are wider seats with plenty of legroom, plush carpeting (even on the walls) and a climate control system that is sure to keep you snugly warm this winter. To help you catch up on reading all those exciting office memos, we've got individual seat lights and drop-down trays on the back of each seat.

Our new Amfleet trains aren't the only attractive offer we have for you. Our special 46-ride multi-ride ticket will save you up to 55% off the regular coach fare. Here's how it works: buy a ticket at the beginning of any month and it entitles you to 46 single rides in either direction for any city pair and intermediate points along our route.

At Amtrak's Detroit station, you'll find special buses waiting to shuttle you to Wayne State University, New Center and all major downtown business and shopping locations, including the exciting new Renaissance Center

complex. (Shuttle bus fare—40¢ each way.) For more information on our new "Michigan Executive," simply call Amtrak (toll-free) at 1-(800)-621-0353.

	Regular Coach	Off-Peak Round-Trip 30-Day Coach Excursion*	46-Ride Coach Ticket
Chelsea to:			
Jackson	\$3.40	\$2.55	\$41.50
Ann Arbor	2.70	2.05	36.00
Ypsilanti	4.00	3.00	48.50
Detroit	9.20	7.00	91.00

*Not good for boarding after 11:00 AM on Fridays and Sundays. Not good all day during certain holiday periods.

Michigan Executive Schedule					
	Jackson	Chelsea	Ann Arbor	Ypsilanti	Detroit
Eastbound	6:15 AM	6:37 AM	7:00 AM	7:10 AM	7:50 AM
Westbound	6:45 PM	6:20 PM	6:00 PM	5:45 PM	5:15 PM

Amtrak
Amtrak Station, Jackson St., Chelsea

KIWANIS
3rd ANNUAL
CITRUS FRUIT SALE!

Direct from the Groves in Sunny Florida
Tree-Ripened Florida Citrus Fruit

Per Box

- ★ TANGELOS . . . \$8.50
- ★ GRAPEFRUIT . . . \$8.50
(White and Pink - Seedless)
- ★ NAVEL ORANGES \$9.50
(A Box is 4/5 bushel)

You may order all oranges - all grapefruit, or mixed, half and half. Five days before the citrus fruit is on your table it was hanging on a tree in sunny Florida. Truly fresh Florida citrus fruit.

YOU CANNOT BUY THIS IN ANY STORE!
ORDER NOW! Receive the finest CITRUS FRUIT you have ever eaten . . . and help Kiwanis carry out their many community service projects.

Place Orders With Any of the Following:

CHELSEA PRO HARDWARE
HEYDLAUFF'S
GAMBLES
RICK'S MARKET
STATE FARM INSURANCE
FRISINGER REALTY

KUSTERER'S FOOD MARKET
CHELSEA STATE BANK
FOSTER'S MEN'S WEAR
GROVE 5c to \$1 STORE
THE CHELSEA STANDARD
OR ANY CHELSEA KIWANIAN

ORDER NOW - DELIVERY DEC. 12



EARLIEST KILL REPORTED: Shortly after Ernest Sell appeared at the door of The Chelsea Standard with an 8-point buck, Royce Leacock, of Adrian, pictured above, drove up with yet another 8-pointer. Leacock said he started hunting Tuesday morning at 7 a.m. when the firearms deer season opened, and 45 minutes later he had bagged his 175-lb. prey while scouring the Oakes Camping Ground area near Munith. Leacock downed the buck using a Browning automatic, and plans to mount the head.

Hybrid Corn Has Reached 100th Birthday

Michigan farmers grow enough corn each year to keep the state in or near the top 10 corn-producing states in the nation. This year Roy Lynn, Jr., Kalamazoo, harvested 352.64 bushels of corn from one acre to return the world's corn growing championship to Michigan where it all began 100 years ago.

About this time of year back in 1877 Dr. William J. Beal was harvesting corn on a site where Michigan State University students now walk on their way to classes. The yields from the experimental plots were considerably higher than those achieved by the farmers of that day.

As a result, Beal is recognized as the first person to make controlled crosses between varieties of corn for the sole purpose of increasing yields through hybrid vigor.

His experiments stimulated the thinking of crop scientists here and in other states for the next quarter of a century and undoubtedly had much to do with the eventual development of modern hybrid corn varieties—like the one Lynn used to produce his phenomenal 352-bushel yield.

Beal studied under the famous Harvard botanist Asa Gray in the 1880s. From Gray he developed his belief in Charles Darwin's theory of evolution and the associated ideas on genetics.

In 1876 Darwin published "Cross- and Self-Fertilization in the Vegetable Kingdom." After reading the book, Beal wrote to Darwin, expressing his ideas concerning hybrid vigor and his tentative plans for experimentally proving the hypothesis.

Darwin replied, saying among other things, "I am glad that you intend to experiment." With this encouragement, Beal proceeded to his original experiment which led to the 20th century miracle—hybrid corn—and the resulting recognition for farmers like Roy Lynn who really know how to grow it.

Abdominal x-rays during pregnancy can possibly damage the unborn baby, according to The National Foundation-March of Dimes. Be sure to tell any physician or dentist who wishes to make x-rays of you that you are, or may be pregnant.

Cager of the Week



THERESA THOMPSON (40), forward for Chelsea's girls varsity basketball squad, joined the team for her first year this season. The 5'7½" junior said that as a forward, she is "used as an escape when the guards can't shoot the ball." Thompson's best game this season was her team's second encounter with Saline. In the game, she scored her most points. In listing Chelsea's first game with South Lyon as the team's best this year, Thompson defended her choice with the following words: "We played more as a team in that game, and won because we were good at free shots." She noted that her team's loss to Milan two weeks ago was a real disappointment because Chelsea is basically a stronger team. However, outside of that game, she acknowledged she was satisfied with her team's performance thus far. In describing Chelsea's progress this year, Thompson said the Bulldogs have been "playing more as a team now than when the season opened, and free shooting has really improved." Predicting that Chelsea would finish at the top of the league this year, Thompson added, "we have lots of talent." The cager, who limits her participation in high school sports to basketball, is the daughter of Margaret Thompson of 299 S. Fletcher Rd.

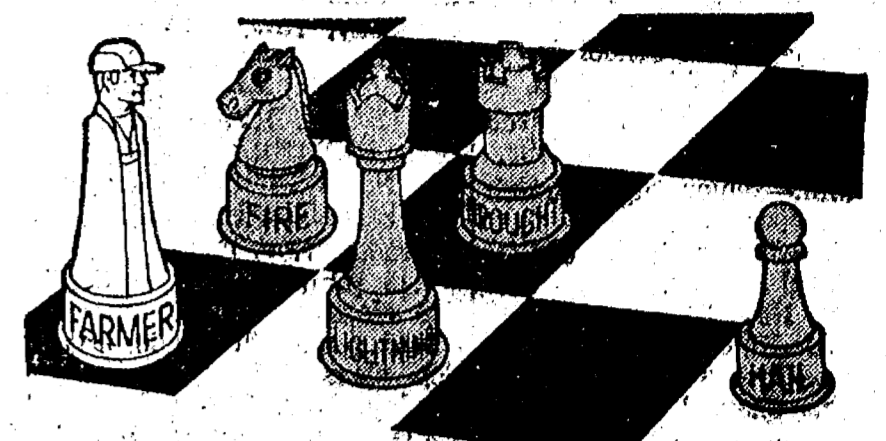
HOKY

Non-Electric Floor and Carpet Sweeper
(As demonstrated at the Chelsea Fair.)
Great shower, wedding or Christmas gift.

A. BALHOFF

Ph. 426-4952 Dexter

Standard Want Ads Will Sell Your Unwanted Items



It's your move...

You need more than skill and endurance when you're playing against these odds. Your best backer is a financial one...the Federal Land Bank Association. They're with you when it counts...when you're ready to buy land, build buildings, add to your livestock, and expand your operation. When other lending institutions are shying away from agricultural loans, the Land Bank has funds available at the lowest possible cost. We know the problems you've faced because we've been working beside you for over 50 years. No matter what your problem or opportunity, we're there to help you...checkmate.

3645 Jackson Road
Ann Arbor, Mich. 48106
Phone 1-313-769-2411



The Federal Land Bank Association of a federally chartered, privately funded corporation serving farmers in

GIVE THE BEST FOR CHRISTMAS

GIVE AN ORGAN

9 used double keyboard organs in good condition.

Price Negotiable.

Ph. 475-2822 after 6 p.m.

I am not a dealer.

Service Pins Given Hospital Employees

Chelsea Community Hospital honored 11 hospital employees, who have each given five years of service to the hospital, at a champagne supper last Friday evening, Nov. 11.

Each employee was presented with a corsage or boutonniere, a bottle of champagne, and a five-year pin commemorating the occasion.

Celebrating their fifth anniversary of service were Kathleen Patrick, Karen Barbour, LPN, Joyce Ousley, Sue Scott, Janice Kidd, LPN, Stella Wolfe, RN, and Catherine Whitaker. Dinner music was provided by Alice Tite.

Also receiving awards but unable to attend the dinner were Barry Novess, Mary D'Ondofrio, Kathleen King, LPN, and Helen Palacky.

Complete Selection
Holiday Foods
For Thanksgiving

Full Line Supermarket
BEER - WINE - LIQUOR
MARATHON GAS PUMPS
AUTHORIZED FOOD STAMP STORE

Jiffy market

Big Enough To Serve You . . . Small Enough To Know You!

Open 7 Days A Week
7 a.m. to 10 p.m.
Corner Sibley & Werkner Rds.
PHONE 475-1701

U.S.D.A. CHOICE MEATS

Guaranteed Satisfaction — Courteous Service — U.S.D.A. Choice Meats

WONDER COUNTRY STYLE

BREAD

3 1 1/4-Lb. Loaves \$1.00

FRESH EGGS

U.S.D.A. GRADE A MEDIUM SIZE WHITE

59¢ doz.

FARM MAID

HOMOGENIZED VITAMIN D GRADE A

MILK

\$1.39 gal.

JIFFY MARKET
SPECIAL FOR THANKSGIVING!

FARM MAID ICE CREAM

1/2 gal. 89¢

MEAT DEPARTMENT

Tender Beef with Flavor!

U.S. Choice Beef Chuck Roast

BLADE CUT . . . lb. 69¢

CENTER CUT . . . lb. 79¢

ARM CUT . . . lb. \$1.09

ENGLISH CUT . . . lb. \$1.09

U.S. CHOICE STEAK

T-BONE STEAK . . . lb. \$2.19

Porterhouse Steak . . . lb. \$2.29

SIRLOIN STEAK . . . lb. \$1.69

LARGE END RIB STEAK . . . lb. \$1.49

ROUND STEAK . . . lb. \$1.49

RUMP ROAST . . . lb. \$1.59

CUBE STEAK . . . lb. \$1.59

BEEF STEW . . . lb. \$1.09

TURKEY

U. S. GOVERNMENT INSPECTED GRADE A

Serve the Finest Quality

59¢ lb.

18 to 20 lbs. PHONE AHEAD 475-1701

FULL SELECTION OF TURKEYS
BUTTERBALL TURKEYS - TURKEY ROLLS
FRESH OYSTERS - DUCKS - GEESE - ROASTERS

COURTLAND VALLEY

SAUERKRAUT . . . 2 Lb. Pkg. 39¢

FRESH GROUND—MADE FROM BEEF

HAMBURGER . . . lb. 79¢

FRESH

BEEF LIVER . . . lb. 49¢

FRESH HOME MADE

PORK SAUSAGE . . . lb. 99¢

1-LB. PKG. ECKRICH

SMORGAS - PAC . . . lb. \$1.39

LIQUORS - WINES - BEER

KRUNCHEE POTATO CHIPS 8-Oz. Bag 59¢	PEPSI-COLA 8-Pack 12-Oz. Cans \$1.49	Krunchee Thin Pretzel or Pretzels Stix 9-Oz. Bag 49¢
---	--	--

SPECIAL for THANKSGIVING

Your Choice
CANADA DRY MIXERS
The Ever-Popular 7-UP
The Famous Original SQUIRT
Deliciously Different
VERNON'S GINGER ALE
Large 28-Oz. No-Return Bottles
Bottle Case of 12

45¢ \$4.95

JIFFY'S MARATHON GAS

REGULAR 59.9

Gal. Including All Taxes

Start Your Holiday Trips Here
With Gas You Can Depend On!

+ Services in Our Churches +

FIRST UNITED METHODIST CHURCH

The Rev. Marvin H. McCallum, Pastor
Thursday, Nov. 17—
9:00 a.m.—Elizabeth Circle at the home of Barbara Brown.
8:00 p.m.—Charge Conference in the Education Building.

Sunday, Nov. 20—
8:00 a.m. to 9:00 a.m.—Continental Breakfast in the Social Center for the Men's Fellowship.
10:00 a.m.—Worship service (nursery provided for children up to the age of 2, and a church school class for 2- and 3-year-olds).

10:20 a.m.—Church school for 4-year-olds through 6th graders.
11:00 a.m.—Junior high church school. Coffee and punch hour.
11:10 a.m.—Senior high church school.

6:30 p.m.—Junior high UMYF in the Social Center.
Wednesday, Nov. 23—
3:30 p.m.—Kinder Choir.
4:00 p.m.—Praise Choir.
8:00 p.m.—Chancel Choir.

OUR SAVIOR LUTHERAN CHURCH
1515 S. Main, Chelsea
The Rev. William H. Keller, Pastor

Friday, Nov. 18—
7:30 p.m.—Family Night, sponsored by Christian Education Committee.
Sunday, Nov. 20—
9:00 a.m.—Sunday school and Bible Classes.

10:30 a.m.—Worship service with Holy Communion.
Wednesday, Nov. 23—
No Confirmation classes.
7:30 p.m.—Family Thanksgiving Eve Service.

Thursday, Nov. 24—
Thanksgiving Day. Study Matthew 24:37-44.

ZION LUTHERAN CHURCH
Corner of Fletcher, Waters Rds.
The Rev. John R. Morris, Pastor

Saturday, Nov. 19—
9:00 a.m.—8th grade Youth Instruction.
10:30 a.m.—7th grade Youth Instruction.

Sunday, Nov. 20—
9:00 a.m.—Sunday school.
10:15 a.m.—Worship. WOZ Special. Thankoffering Box Return Service.

Monday, Nov. 21—
8:00 p.m.—Senior Choir.
Tuesday, Nov. 22—
4:00 p.m.—Junior Choir.
7:30 p.m.—Shuffleboard.

Wednesday, Nov. 23—
7:30 p.m.—Thanksgiving Eve Worship.
Thursday, Nov. 24—
Thanksgiving Day.

METHODIST HOME CHAPEL
Chaplain Ira Wood, Pastor
Every Sunday—
8:45 a.m.—Worship service.

Residential - Commercial
REMODELING
FREE ESTIMATES

Ib V. JENSEN and SON
LICENSED BUILDER

378 Spring Lake Drive
Chelsea, Mich.
PHONE 475-1820

ST. PAUL UNITED CHURCH OF CHRIST

The Rev. R. J. Ratzlaff, Pastor
Saturday, Nov. 19—
9:00 a.m.—Confirmation.
Sunday, Nov. 20—
9:00 a.m.—Church school.
10:30 a.m.—Worship and church school.

Thankoffering. Courier articles due.
Tuesday, Nov. 22—
3:30 p.m.—Joyful Noise.
Wednesday, Nov. 23—
3:30 p.m.—Junior Choir.
7:30 p.m.—Thanksgiving Service with Communion.

Thursday, Nov. 24—
Thanksgiving.

FAITH EVANGELICAL LUTHERAN CHURCH
3575 North Territorial Rd., Dexter
The Rev. John P. Huebner, Pastor

Thursday, Nov. 17—
4:15 p.m.—6th grade Confirmation class.
5:45 p.m.—8th grade Confirmation class.

Sunday, Nov. 20—
9:00 a.m.—Sunday school for ages 4-11. Teen classes for 7th graders-12th graders.
10:00 a.m.—Worship service.

Tuesday, Nov. 22—
4:30 p.m.—7th grade Confirmation class.
7:30 p.m.—Inquirers.

CHELSEA FREE METHODIST FELLOWSHIP
Meetings at St. Barnabas Episcopal Church
20500 Old US-12
The Rev. William L. Cryderman, Pastor

Call 475-8953 for information.
Every Sunday—
4:00 p.m.—Worship service.
5:00 p.m.—Adult Bible Study and Sunday school for all ages.

Every Wednesday—
3:30 p.m.—Junior Choir at the Pratt residence, 625 N. Main St.
Every Thursday—
7:00 p.m.—Prayer meeting at the church except for the third Thursday of every month. (Family Night in homes, call for location).

FIRST UNITED METHODIST PARKS AND TERRITORIAL RDS.
The Rev. Glenn Kjellberg, Pastor
Every Sunday—
9:15 a.m.—Morning worship.
10:00 a.m.—Sunday school.

BETHEL EVANGELICAL AND REFORMED CHURCH
(United Church of Christ)
Freedom Township
The Rev. Roman A. Reineck, Pastor

Every Sunday—
10:00 a.m.—Worship service.
10:00 a.m.—Church school.

CHURCH OF CHRIST
13661 Old US-12, East
Evangelist John M. Hamilton
Every Sunday—
10:00 a.m.—Church school.
11:00 a.m.—Worship service.
Nursery will be available.
6:00 p.m.—Worship service.
Every Wednesday—
7:30 p.m.—Bible study.

FIRST ASSEMBLY OF GOD
The Rev. Richard Coury, Pastor
Every Sunday—
9:45 a.m.—Sunday school.
11:00 a.m.—Worship service.
6:00 p.m.—Evening worship.
Every Wednesday—
7:00 p.m.—Christ's Ambassadors. Missionettes. Bible meditation and prayer.

ST. JOHN'S EVANGELICAL AND REFORMED CHURCH
(United Church of Christ)
Francisco
The Rev. Virgil King, Pastor.
Every Sunday—
10:30 a.m.—Church services.

ST. THOMAS EVANGELICAL LUTHERAN
Ellsworth and Haab Rds.
The Rev. Jerome Dykstra, Pastor
Every Sunday—
10:00 a.m.—Worship service. Coffee Fellowship.

FIRST UNITED PRESBYTERIAN CHURCH
Unadilla
The Rev. T. H. Liang, Pastor
Every Sunday—
9:45 a.m.—Sunday school.
11:00 a.m.—Worship service.

ST. JOHN'S UNITED CHURCH OF CHRIST
Rogers Corners
Every Sunday—
10:30 a.m.—Worship service.

NORTH LAKE UNITED METHODIST CHURCH
The Rev. John Elliott, Pastor
Every Sunday—
10:00 a.m.—Church school.
10:00 a.m.—Worship service.

FIRST CHURCH OF CHRIST SCIENTIST
1883 Washtenaw Ave., Ann Arbor
Every Sunday—
10:30 a.m.—Sunday school, morning service.

SALEM GROVE UNITED METHODIST CHURCH
3320 Notten Rd.
The Rev. Gerald R. Parker, Pastor
Every Sunday—
9:30 a.m.—Sunday school.
10:30 a.m.—Worship service.

ST. JACOB EVANGELICAL LUTHERAN CHURCH
12501 Rietmiller Rd., Grass Lake
The Rev. Andrew Bloom, Pastor
Every Sunday—
9:00 a.m.—Worship service.
10:15 a.m.—Divine services.

BAHA'I FIRESIDE
Every Thursday—
3:00 p.m.—At the home of Toby Peterson, 705 S. Main St. Anyone wishing to learn about the Baha' faith is welcome.

IMMANUEL BIBLE CHURCH
145 E. Summit St.
The Rev. LeRoy Johnson, Pastor
Every Sunday—
9:45 a.m.—Sunday school, nursery provided.
11:00 a.m.—Morning worship nursery provided.
6:00 p.m.—Evening worship.
Every Wednesday—
7:00 p.m.—Family hour, prayer meeting and Bible study.

GREGORY BAPTIST CHURCH
The Rev. Paul White, Pastor
Every Sunday—
9:45 a.m.—Sunday school.
11:00 a.m.—Morning worship.
8:00 p.m.—Young people.
7:00 p.m.—Evening worship.
7:30 p.m.—Thursday mid-week worship service.

ST. BARNABAS EPISCOPAL CHURCH
20550 Old US-12
The Rev. Fr. Jerrold F. Beaumont, B.S.P.
Every Sunday—
10:00 a.m.—Holy Communion first, third, and fifth Sundays, and 7:30 p.m. every Wednesday.
10:00 a.m.—Morning prayer. Second and fourth Sundays. Church school and nursery every Sunday.
Every Wednesday—
8:15 p.m.—Bible study and discussion groups.
First Wednesday of every month—Bishop's Committee.
Third Thursday of every month—Episcopal church women.

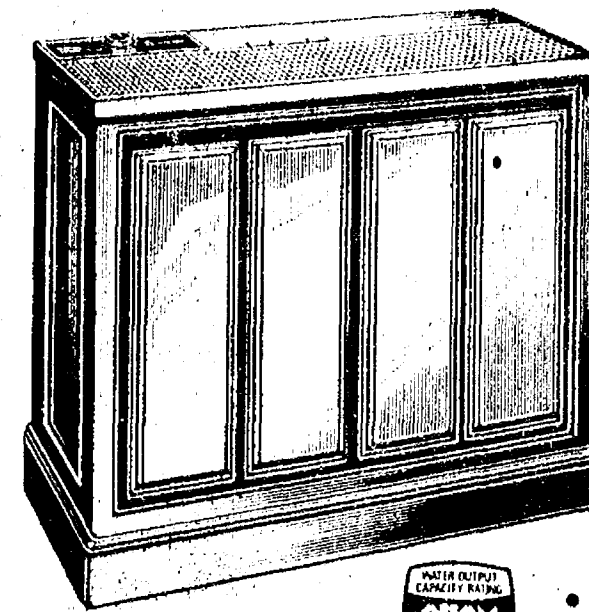
NORTH SHARON BIBLE CHURCH
Sylvan and Washburne Rds.
The Rev. Ronald C. Purkey, Pastor
Every Sunday—
10:00 a.m.—Sunday school.
(Nursery available). Junior church classes.
11:00 a.m.—Worship service.
6:00 p.m.—Senior High Youth meeting. Youth Choir.
7:00 p.m.—Evening worship services. (Nursery available.) All services interpreted for the deaf.
Every Wednesday—
7:00 p.m.—Bible study and prayer meeting. (Nursery available.) Bus transportation available: 428-7222.

CHELSEA BAPTIST CHURCH
377 Wilkinson St.
The Rev. James Stacey, Pastor
Every Sunday—
9:45 a.m.—Sunday school for the whole family.
11:00 a.m.—Morning worship service and children's church.
8:00 p.m.—Evening service, informal singing, sharing, study and discussion. (Nursery care provided for all services.)
Home Bible Studies each week in the homes of the elders.
For information, call 475-8323.

CHURCH OF JESUS CHRIST OF LATTER-DAY SAINTS
Meetings at
Church of Jesus Christ of Latter-Day Saints
2141 Brockman, Ann Arbor
Every Sunday—
9:30 a.m.—Sunday school.

WATERLOO VILLAGE UNITED METHODIST CHURCH
8118 Washington St.
The Rev. Glenn Kjellberg, Pastor
Every Sunday—
10:00 a.m.—Sunday school.
11:15 a.m.—Worship service.

NOW ENJOY HUMIDIFIED COMFORT



As Low As
\$64.95

and save on fuel bills too!

Coolerator HUMIDIFIER

- Humidified air makes you more comfortable with less heat • AHAM Certified Evaporative Capacity—5 gallons of water a day • Separate drum and fan motors • Draft-free top air discharge • Easy-to-fill 7.5 gallon reservoir • Beautiful autumn brown styrene cabinet • Easy to clean • Combination humidistat and fan control • Drum-type, quiet mechanism

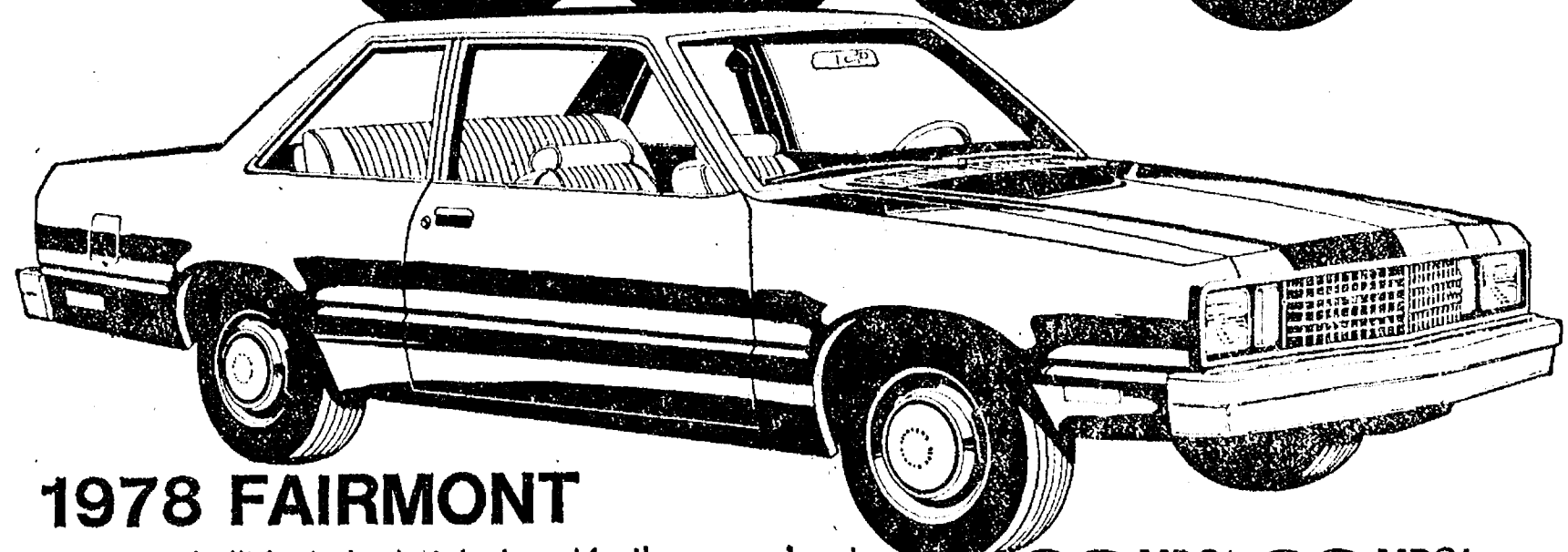
HEYDLAUFF'S

113 N. Main St., Chelsea

Ph. 475-1221

Tell Them You Read It In The Standard!

4 NEW '78 FORDS UNDER \$3800



1978 FAIRMONT

A new car built for today but designed for the years ahead. Fairmont combines fuel efficiency, space efficiency, and cost efficiency.

33 MPG† 23 MPG†
HWY. CITY
With 2.3 litre engine and manual transmission.

\$3589*

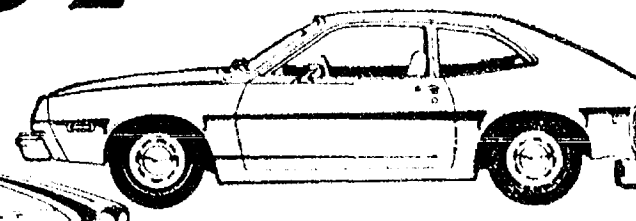


'78 MUSTANG II

Now, Go Mustang with lower base sticker prices than last year's Mustang II's.

33 MPG† 23 MPG†
HWY. CITY
With 2.3 litre engine and manual transmission.

\$3555*

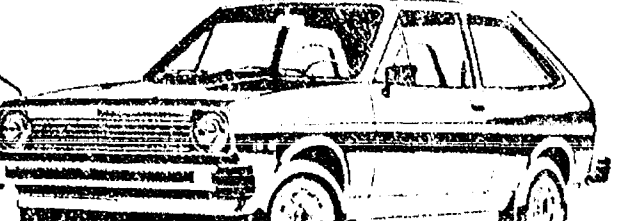


'78 PINTO PONY

More standard features on all Pintos, yet sticker priced less than last year's models when comparably equipped.

35 MPG† 25 MPG†
HWY. CITY
With 2.3 litre engine and manual transmission.

\$2995*



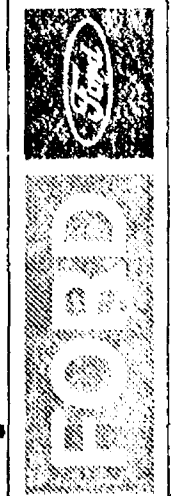
'78 FIESTA

Imported from Germany by Ford. With front-wheel drive. Room and comfort for four.

46 MPG† 34 MPG†
HWY. CITY
With 1.6 litre engine and manual transmission.

\$3799*

*Manufacturer's suggested sticker price for base model, excluding title, taxes and destination charges.
†EPA estimates. Your actual mileage may vary depending on your car's condition, optional equipment, and how and where you drive.



ECONOMY STARTS HERE, AT YOUR FORD DEALER.

PALMER MOTOR SALES, INC.

CHELSEA, MICHIGAN

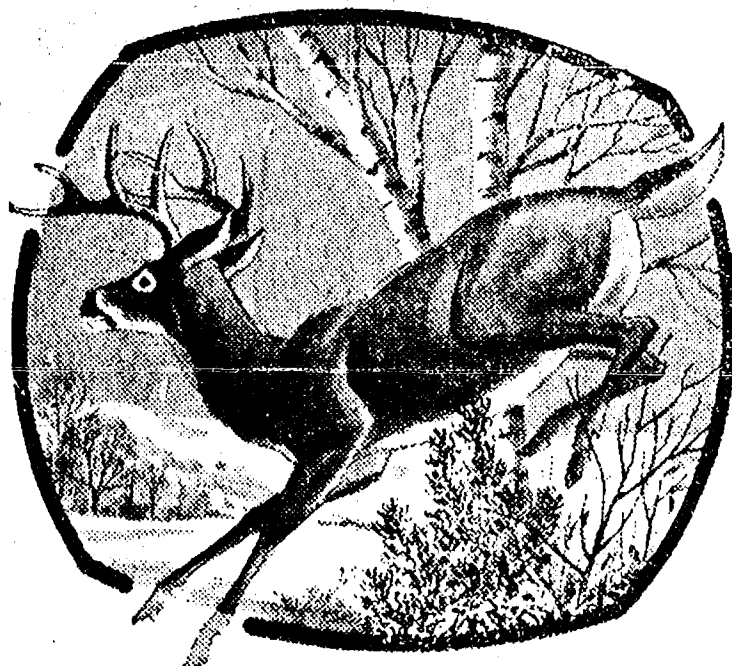
PORK SALE

10-12-IB. AVG.
Baby Pork Loinslb. 98c PORK STEAKlb. 89c
Cut and Wrapped - Ready for Freezer
PORK CHOPSlb. \$1.19 PORK HOCKSlb. 69c

DEER PROCESSING

SKINNING, CUTTING,
WRAPPING,
QUICK FREEZING

Bring Your Deer
To US!



TURKEYS

Place Your Order Before Nov. 21

CUSTOM SLAUGHTERING
and PROCESSING

HOME FREEZER MEATS
Wholesale - Retail

DUNBAR'S DEXTER LOCKER

8083 MAIN ST., DEXTER PH. 426-8466 • PAUL DUNBAR, OWNER

Fair Board Worried About Water Run-Off

A serious discussion by the board with regard to the manholes, large cement tile, and drainage of surface water contrary to the natural flow, as a result of Chelsea's Old US-12 Street Improvement Plan dominated the agenda of business at last week's regular Fair Board meeting, held in conjunction with the board's annual meeting.

The annual meeting was called to order by President Lloyd Grau. In addition to the president, those in attendance included Ed Keezer, board secretary; Kay Poljan, treasurer; Ruth Leach, fair secretary; Jerry Heydlauff, vice-president; and Earl Heller, manager. Directors present were Art Steinaway, Keith Bradbury, Harold Gross, Ralph McCalla, Dick Poljan, Charles Staphis, Jerry Herrick, Charles Koenn, Rueben Lesser, Jr., and two new board members, Archie Bradbury and Robert Heller.

Absent were John Klink, Joe

Merke, III, Frank Renton, Frank Sweeney and Harold Trinkle. Others attending the meeting were Merle Leach, Jim Gaken, John Wellnitz and Frank Cook.

It was reported that Cook's Carnival will return to Chelsea for the 1978 fair.

Merle Leach gave a comprehensive account of the Chelsea Fire Department's activities with regard to the 1977 fair and was followed by Fire Chief Jim Gaken, who presented some suggestions for future fair parades and safety measures, especially during the demolition derby.

Board Secretary Ed Keezer read the minutes of last year's annual meeting, and Treasurer Kay Poljan gave her annual report. As there were no corrections, the reports were accepted as read. The board's regular meeting was then called to order, and the secretary's and treasurer's reports were accepted as read. Normal business of the Fair Board was carried out as usual.

A general discussion followed Art Steinaway's account of the fair kitchen. Detailed questions were asked about kitchen operations during fair week.

The board then turned its attention to the drainage problems expected as a result of the US-12 Street Improvement Plan. According to John Wellnitz, before the digging was done, the corner of Old Manchester Rd. and Old US-12 was a natural high spot. All drainage flowed west from the corner, leaving very little surface water. Other drainage was towards the south.

"There was not even enough water left standing after a rain to warrant culverts at the fair gates," Wellnitz said. "There was also no surface water from the east."

"Now, several hundred feet west along the south side of Old US-12, there is a large tile beginning at the surface of the dirt, and sloping down 10 or 12 feet to drain into a large new manhole," he observed. "Also, several hundred feet west of the fair corner, drainage is again contrary to nature as the water flows west to the manhole."

He noted that two or three manholes were installed on the north side of Old US-12, and water from these manholes dumps into the corner manhole. Then, the surface water is routed south.

"The large tile comes to the top of the ground a little north of the south gate," Wellnitz explained. "We can expect a washed out drive at the south gate, as well as flooded conditions on all the lower fairgrounds."



ERNEST SELL, left, of Chelsea, was the first deer hunter to report hunting success Tuesday morning, the first day of the firearms deer season. The season opened at 7 a.m., and less than two hours later, Sell had bagged the 8-point buck he displays above, while hunting near Waterloo. With Sell in the photo are two of his fellow-hunters, Tim Barrels, center, and David Seyfried, both also of Chelsea.

★ District Court Proceedings ★

Week of Nov. 8-14

Rocky Humphrey was sentenced to pay fines and costs of \$250 on charges of impaired driving.

Terry Riveria was sentenced to pay fines and costs of \$250 on charges of driving under the influence of liquor.

Karen L. Brunk pled guilty to charges of disorderly person. Fines and costs, \$50.

Douglas W. Fett was sentenced to pay fines and costs of \$250 on charges of impaired driving.

Sandra J. Carden was found guilty on charges of speeding. Fines and costs, \$41.

Anthony Sedo pled guilty to charges of speeding. Fines and costs, \$59.

Douglas L. Robison was found guilty on charges of violation of his restricted operator's license. Fines and costs, \$50.

Elizabeth Purcell pled guilty to charges of minor in possession of alcohol. She was sentenced to pay fines and costs of \$50, and to five days on the Washtenaw County Sheriff's Department work program.

Romualdo M. Cordoba pled guilty to charges of transporting open alcohol in a motor vehicle. He was sentenced to pay fines and costs of \$35, and to three days on the Washtenaw County Sheriff's Department work program.

Alfredo Montalvo pled guilty to charges of possession of open alcohol in a motor vehicle. He was sentenced to pay fines and costs of \$35, and to three days on the Washtenaw County Sheriff's Department work program.

Willard M. Corum pled guilty to reduced charges of impaired driving. He was referred to probation, to the Alcohol Safety Action Program, and will be sentenced Jan. 10.

John D. Murrell pled guilty to charges of speeding. Fines and costs, \$38.

Michael Wiggins pled guilty to charges of speeding. Fines and costs, \$56.

Daniel M. Engler pled guilty to charges of speeding. Fines and costs, \$41.

Michael D. LaFay appeared in court on charges of committing larceny of property valued under \$100. The case was dismissed on costs of \$50.

Thomas Kennedy appeared in court on charges of committing larceny of property valued under \$100. The case was dismissed on costs of \$50.

Arthur Altwater was sentenced charges of owning a dog at large to pay fines and costs of \$35 on that bites.

SALE

WE'RE CLEANING HOUSE!

Demos - New and Used Cars

SAVE HUNDREDS DURING THIS SALE!

USED SPECIALS

1973 FIREBIRD
V-8, automatic, power steering and brakes, 17,000 miles.

1975 MONTE CARLO
Loaded, 30,000 miles.

1976 OLDS 442
Must see. Power steering and brakes, AM-FM radio.

1977 CHEVETTE
8,000 miles. Automatic. Priced to sell.

1973 EL CAMINO
V-8, automatic, AM-FM radio. Drive and Buy!

NEW and DEMOS

1977 MONTE CARLO
Loaded, 3,000 miles. Stock No. 3553. **SAVE \$858.00**

1977 FLEETSIDE PICK-UP
Stock No. 4946. **SAVE \$1005.00**

1977 IMPALA
Stock No. 3481. 305 engine, air, Cruise Control. **SAVE \$943.00**

1977 CAPRICE CLASSIC
Stock No. 3376. Air, Cruise Control, tilt wheel, 305 engine. **SAVE \$977.00**

1977 BEAUVILLE VAN
Stock No. 4875. 9-pass, air, Cruise Control. **SAVE \$948.00**

LLOYD BRIDGES CHEVROLET

M-52 and I-94

Ph. 475-1373

Chelsea, Mich.

A Standard Want Ad Will Get Results!

TECHNICIANS:

Immediate opening for technicians with mechanical skills. You should have some technical qualifications and the ability to meet and work with people. Basic electronic training helpful but not essential.

Train at Full Pay

Business Products, Inc., will train you as a customer engineer at full pay. Your responsibilities will include servicing and maintaining office equipment in the Ann Arbor area.

Liberal Fringe Benefits

There's a liberal benefit package including paid vacation, holidays and medical and life insurance.

CALL OR WRITE

BUSINESS PRODUCTS, INC.

2400 Industrial Row

Troy, Mich. 48064

Phone: 549-1200

2255 Industrial Hwy.

Ann Arbor, Mich. 48104

Phone: 668-7550

Personalized

CHRISTMAS CARDS and STATIONERY

Do you send a Christmas newsletter?

Come in and see our fine selection of Christmas letterheads and envelopes.

We Are Offering 15% Off on

Personalized Christmas Cards thru Nov. 30.

GIFT IDEAS

Monogrammed Stationery - Napkins
Coasters - Playing Cards - Book Matches

The PRINT SHOP

Phone 475-1389

405 N. MAIN ST. CHELSEA, MICH.

Open Mon. thru Fri, 8:30 a.m. to 5:30 p.m.



Harry Kenworthy, Community Relations Manager, Ann Arbor, reminds you:

There are things you can do to control the cost of your phone bill.

We are constantly searching for ways to help you economize on your phone service, but here are just a few ideas on how you can help yourself: Call when it's least expensive. For example, when you're calling long distance, dial direct and plan your calls for times when the rates are lowest. Budget Service that's really low budget! Look into the availability of Budget Service if you don't make a lot of phone calls every month. It's the least expensive one-or-two party phone service we offer.

Plan to have all your service installed in one visit. For instance, if you move, plan carefully so the installer doesn't have to make extra trips, for which you may have to pay additional charges. And while you're planning for new service, make sure it's going to be the kind most suited to your needs.

Sometimes, little tips can save you a surprising amount over the long haul. We'll keep trying to help you save.

Michigan Bell... people who enjoy serving people.



Nancy Dickerson, prominent national correspondent, reports for Detroit Edison

It's Michigan Energy Month. Take another look at how you can use energy wisely.

Governor William Milliken has officially proclaimed November as Energy Month to promote discussion about energy conservation in Michigan.

It's a good time for all of us to find and share new ways to use energy wisely.

The theme for the month, "Energy—Handle with Care," tells the story. Many of the fuels we use to supply energy are becoming scarce and expensive. So energy conservation directly concerns us all.

If you have questions on energy-saving techniques, call the Energy Hot Line in Lansing during November. The number is 1-800-292-4704 and it's toll-free.

Here are just a few of the things you can do to conserve energy at home. You'll be dollars ahead on energy costs, too.

- Have your home properly insulated. If you own your home, Detroit Edison's Home Insulation Finance Plan may help you get the work done. Ask about it at any customer office.

- Install storm windows and doors, and check weatherstripping and caulking. Close draperies and pull shades at night to cut down on heat loss through glass areas.

- Keep your furnace and air conditioner in good repair, and replace filters often. Faulty appliances waste energy and money.

- Consider installing a heat pump for energy-efficient heating and cooling. If you're planning on buying an air conditioner next summer, make sure it's the right size for the area you want to cool, and has an Energy Efficiency Rating of 8 or more.

As an energy supplier, Detroit Edison is an active and concerned participant in America's crusade for conservation.

So, even though the people at Detroit Edison cannot control the use of energy other than their own, they are continually working to produce and supply electricity as efficiently as possible; both to conserve our non-renewable natural resources and to give you the most for your energy dollar.

Here are some of the things Detroit Edison is doing:

- salvaging and recycling paper, wire, lines hardware, poles, street-lighting equipment, transformers, capacitors... even oil, again saving limited resources

- using compact service vehicles for more efficient and economical operation and gas mileage

- pioneering time-of-day rates and remote-controlled air conditioning and water heating to reduce energy consumption and waste as well as slowing the need to build costly new generating plants

- continuing research into alternative energy sources such as solar, nuclear, wind and refuse in order to conserve scarce fossil fuels.

America's crusade for conservation requires a working relationship between those who supply energy and those who use it.

Detroit Edison is working hard to do its part. But the success of this crusade depends on all of us... every day, every month, every year round.



November is Energy Month. Conserve for all it's worth. The power is in your hands.

Detroit Edison

Community Calendar

Young Homemakers at Country Craftique, Nov. 17, 8 p.m. Pizza following the meeting.

Annual Christmas Bazaar and Bake Sale, Friday and Saturday, Dec. 2 and 3, at VFW Hall, 105 N. Main St. Time 9 to 5. Free coffee. adv25

AA and Al-Anon meeting, Monday evenings at Chelsea Community Hospital, 8:30 p.m. Closed meetings.

Altar Society of St. Mary is having their annual Thanksgiving and Christmas Bazaar on Saturday, Nov. 19, at Sylvan Town Hall from 9 to 5. adv23

Past Matrons OES, Nov. 17, 12:30 p.m. business meeting and pot-luck, at the Masonic Temple.

Sylvan Township Board meeting the first Tuesday of the month, at 7 p.m., at Sylvan Township Hall. adv42tf

Lima Township Board regular meeting the first Monday of the month, 8 p.m. at Lima Township Hall. adv42tf

Chelsea Home Meal Service delivers one hot meal a day to elderly and disabled living in the Chelsea area. For information, call Caralee Hoffmeyer, 475-8014, or Barbara Branch, 475-7644.

Chelsea Senior Citizens will meet at St. Mary's school Friday, Nov. 18, 6 p.m. for a short business meeting and pot-luck, followed by cards.

American Legion Hospital equipment is available by contacting Larry Gaken at 475-7891.

Chelsea Rebekah Lodge No. 130, the first Tuesday of every month, 7:30 p.m., at the Temple.

Chelsea Co-op Nursery is now taking applications for the 1977-78 school year. To enroll, call Kay Johanson, 475-7765 or 475-8316. advx43tf

Lyndon Township Planning Commission meets the second Thursday of the month at the Township Hall at 8 p.m. adv42tf

Sharon Township Planning Commission regular meeting third Wednesday of each month. adv42tf

Sharon Township Board regular meeting first Thursday of each month, 8:30 p.m. adv42tf

Lima Township Planning Commission regular meeting the third Tuesday of every month, 8 p.m. at the Township Hall.

Lyndon Township Board regular meetings the third Tuesday of each month, 7 p.m., in Lyndon Town Hall.

DEATHS

James A. Robards

Was Employed for 33 Years At Central Fibre Products

James A. Robards, 72, of 511 Taylor Lane, died Nov. 12, at St. Joseph Mercy Hospital, Ann Arbor. He was born June 23, 1905, in Ossin, N.Y., to George and Francena Coe Robards. He married Ella Kleinschmidt on Dec. 11, 1928. She survives.

Mr. Robards had been employed by Central Fibre Co. for more than 33 years before retiring in 1969.

In addition to his widow, survivors include four sons, Roland, of Grass Lake, James, Jr., of Chelsea, Frank, of Chelsea, and Kenneth, of Grass Lake; two daughters, Mrs. Donald (Marjorie) Plumb, of Chelsea, Mrs. Stanley (Myrna) Weir, of Chelsea; 21 grandchildren; four great-grandchildren; two brothers, Glenn of Ann Arbor, and Chester of Salt Lake City, U.; and six sisters, Mrs. Paul (Georgia) Gauss, of Ann Arbor, Mrs. Ethel Walz, of Chelsea, Mrs. Clarence (Eleanor) Payne, of Holt, Mrs. Homer (Marjorie) Parker, of Chelsea, Mrs. Clare (Marian) Kirschman, of Ypsilanti, and Mrs. Ralph (Clara) Glenn, of Stockbridge. A daughter Joyce, preceded him in death in 1942.

Funeral services were held Tuesday, Nov. 15, 2 p.m., at Staffan Funeral Home, with the Rev. Carl Schwarm officiating. Burial followed in Oak Grove Cemetery.

Memorial contributions may be made in Mr. Robards' name to First Congregational church, Chelsea.

Mrs. Ludwig Kazda

Native of Budapest, Hungary Dies at Her Chelsea Home

Elizabeth Kazda, 83, of 725 W. Middle St., died suddenly Nov. 11 at her home. She was born June 5, 1894 in Budapest, Hungary, and later married Ludwig Kazda. He preceded her in death on Jan. 19, 1973.

Mrs. Kazda had lived in Dayton, O., before moving to Chelsea in 1970. Survivors include one son, Professor Louis F. Kazda of Ann Arbor; one daughter, Matilda Kazda of Grass Lake; three granddaughters; and four great-granddaughters.

Funeral services were held Monday, Nov. 14, 11 a.m. at the Chelsea United Methodist Retirement Home Chapel, with the Rev. Ira Wood officiating. Burial followed in Oak Grove Cemetery, Chelsea. Arrangements were by Staffan Funeral Home.

BIRTHS

A son, Aaron Matthew, to Steve and Lori Schanz, of Manchester, Nov. 6, in St. Joseph Mercy Hospital, Ann Arbor. Maternal grandparents are Mr. and Mrs. Donald Fritz, of Chelsea. Paternal grandparents are Mr. and Mrs. Richard Schanz, also of Chelsea.

A daughter, Nicole Rene, to Mr. and Mrs. Mark Leidner, of 4017 Notten Rd., Oct. 25, in St. Joseph Mercy Hospital, Ann Arbor. Maternal grandparents are Mr. and Mrs. David Shrader of Brooklyn, and paternal grandparents are Mr. and Mrs. Fred Leidner of Northfield, Minn.

A son, Armin Drew, to Brent R. and Adamine C. Michaelson of Riker Rd., Nov. 8, in St. Joseph Mercy Hospital, Ann Arbor.

Hospital Patients May Have Guest For Thanksgiving

Thanksgiving will be a very special day at Chelsea Community Hospital, it was announced today by Willard Johnson, administrator of the hospital.

Each patient hospitalized over Thanksgiving Day may invite one relative or friend to have Thanksgiving dinner at the noon hour, with all the trimmings, courtesy of the hospital. Patients and guests will be encouraged to utilize the hospital's comfortable, home-like dining room.

SCHOOL LUNCH MENU

Week of Nov. 21-25
Monday—Hamburgers on a bun, trimmings, french fries, chilled pears, coffee cake, milk.

Tuesday—Lasagna, buttered green beans, bread and butter, dessert, milk.

Wednesday—Thanksgiving dinner at school.

Thursday—Thanksgiving vacation.

Friday—Thanksgiving vacation.

Tighter Editing for Government Printing

Used to be, the Government Printing Office paid for publishing rules in the Federal Register. But, as of Oct. 1, each government agency must now pay its own printing bill. The result?—Tighter editing! Before the change went into effect, the printing bill for a two-week period was \$1.9 million. After the change—\$527,000.

Christmas Bazaar Scheduled Nov. 25-26

Many talented craftsmen from Chelsea and surrounding areas will display and sell their wares during the first Community Christmas Bazaar, Nov. 25-26, at Sylvan Town Hall on W. Middle St.

The bazaar was organized by Janis Miller, Marilyn Poulter and Gail Tolles, who will act as hostesses for the event. They will share in the profits along with the various craftsmen assembling displays for the bazaar.

"We planned this event to involve people in the community who are artists and craftsmen, but who didn't have fair to go to," Mrs. Tolles said in explaining how the idea for a Community Christmas Bazaar originated. "There will be something for everyone, as the works to be displayed represent many different handicrafts."

Marcie Stump will be at the bazaar with her driftwood plaques, dried flower baskets and Christmas decorations. Also, Diane Guard will display and sell her Raggedy Anne and Raggedy Andy

dolls, along with numerous other items, while Mary Beth Tolles will have a variety of macramé jewelry on display.

Other items and artists to be featured at the bazaar will be pottery by Carolyn Palmer, wooden toys by Pat Colless, paintings by Chelsealand Painters and friends, afghans and sweaters by Christine Giffen, and stuffed animals and dolls by Linda Wade.

Christmas tree skirts, wreaths, clown dolls, stick horses, and sock monkeys are just a few more examples of the many handcrafted wares to be found at the bazaar.

The event will be open to the public, Nov. 25, from 5 p.m. to 7 p.m., and Nov. 26, from 9:30 a.m. to 5 p.m. Sylvan Town Hall is located near Chelsea Pharmacy on W. Middle St.

Organizers of the event plan to show their appreciation for the community's support of their project by having a supervised children's corner available at the bazaar where small children may play while their parents shop.

Health Dept. Offers Free Immunizations for Children

Don't let your children suffer needlessly from communicable diseases which may be prevented through immunizations.

The Washtenaw County Health Department conducts immunization clinics regularly on the third Saturday of each month at 2355 W. Stadium Blvd., Ann Arbor, and on the second and fourth Saturday of each month at 555 Tower St. in Ypsilanti. All clinics are held from 9 to 11 a.m. Immunizations including measles, mumps, rubella, diphtheria, tetanus and polio are offered to pre-school and school-age children. Tuberculosis testing is also available for both children and adults.

No appointment is necessary and there is no charge for services. There will be staff available at all clinics for counseling on immunizations needed.

Parents should bring records of previous immunizations with them. Subscribe today to The Standard!

Tonight and Every Thursday THE CAPTAINS TABLE ROAST BEEF BUFFET



"Carved Before Your Eyes"

Serving from 4:30-9:30 p.m.

The Captains Table - 8093 Main St., Dexter



QUALITY BY Curlee.

always a wardrobe favorite now the Blazer is a "must!"

CAMEL or NAVY

Have you ever thought about how compatible it is? It's friendly with just about anything you wear it with — from expensive slacks to your favorite jeans. It's never out of date.

\$85.00

Store Hours: Mon. thru Sat., 8 a.m. to 5:30 p.m.

STRIETER'S MEN'S WEAR

Since 1914

Parson-Wellhoff Vows Spoken

St. Peter's church, Hillsdale, was the setting for the Oct. 15 marriage of Marian Lucile Parson and Kenneth Robert Wellhoff.

The double ring ceremony was performed by the Rev. Wesley Perschbacher in the presence of the immediate families.

The bride is the daughter of Elsie Hopkins of Montpelier, O., and the late Bliss Smith. The bridegroom is the son of Elsa Wellhoff Chupp of Chelsea, and the late Herman Wellhoff.

For her wedding, the bride chose a floor-length aqua blue chiffon over taffeta dress, fashioned with a scooped neckline, empire waistline, and long sheer sleeves. She carried a bouquet of pink sweetheart roses, white baby carnations, and baby's breath on a white Bible.

Matron of honor was Betty Munsell. Her floor-length, jade green crepe dress featured a jeweled neckline and long sleeves. She wore a corsage of pink sweetheart roses and white baby carnations.

Richard Wellhoff, brother of the bridegroom, was best man.

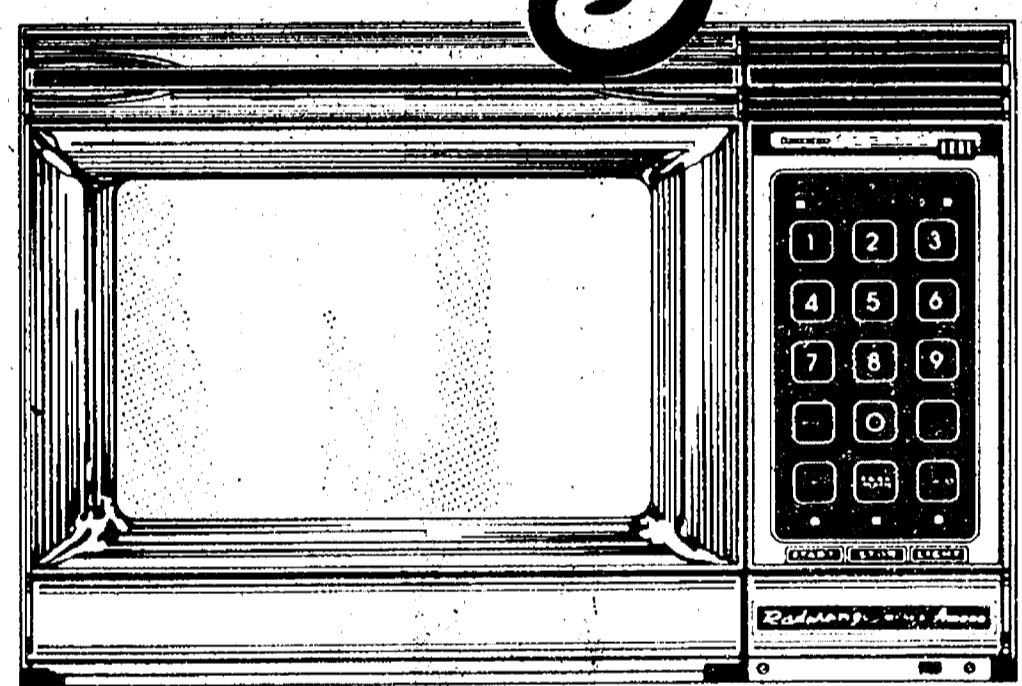


Mr. and Mrs. Kenneth Wellhoff

Following the wedding, the newlyweds returned to Camden where they now make their home. The Division of Hoover Ball and Bearing Co., in Adrian.

Amana RADARANGE SALE

a great value for a great occasion... Amana Radarange... 10th Anniversary SPECIAL



Model RR-9 Touchmatic Radarange MICROWAVE OVEN

The first microwave oven with a memory.

The Raytheon Company, of which Amana is a subsidiary, invented microwave cooking in the mid 1940's. Soon after, Raytheon manufactured the first microwave oven — for commercial use.

10 Years of Leadership

Then in 1967, Amana was the first manufacturer to offer microwave cooking in a practical, 115-volt countertop unit, designed specifically for the home. In the 10 years since that engineering breakthrough, Amana has pioneered many of the major technological refinements in microwave ovens. Refinements like programmed cooking with computerized controls.

Now — to celebrate Amana's 10 years of microwave leadership — we offer the Amana Radarange Microwave Oven 10th Anniversary Special.

Anniversary Special: The Touchmatic Radarange oven Model RR-9.

- Touchmatic Computerized Control. Remembers what you tell it to do by touching numbers and words on the control panel.
- Remembers... how long to defrost.
- Remembers... to wait for food temperature to equalize.
- Remembers... just how long to cook.
- Remembers... to shut itself off and call you for dinner with a pleasant beep.
- Remembers... to display the time of day when cooking's completed, in lights!

675 watts of cooking power. Cooks almost everything gourmet perfect in 1/4th the usual time!

A Real Energy Saver! Cooks almost everything with 50% to 75% less electricity than a conventional electric range.

- Stainless steel interior... large enough for a family size turkey
- See-through window and interior light so you can see what's cooking

Take advantage of our 10th Anniversary Special today!



You're Invited

Amana Radarange cooking demonstration will be held on Saturday, Nov. 19th. Feel free to come in and ask any questions about microwave cooking.

FREE COFFEE and SNACKS

HEYDLAUFF'S

113 N. Main St., Chelsea

Ph. 475-1221

GAMBLES

110 N. Main St. Ph. 475-7472

SAVE ENERGY! SAVE HEATING COSTS!

HOMEGUARD FUEL SAVER INSULATION

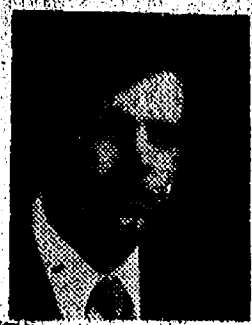
Cellulose Pouring Insulation

\$2.99 per bag

Bag covers 20 sq. ft. 4" deep

Quantities limited, to supply on hand.

CUT WINTER FUEL COST 25 to 50%



Real Estate

By PAUL FRISINGER

REALTOR

RENTING OUT YOUR HOME

Your home becomes a business if you rent it out either for a year or some seasonal period such as the summer. The costs of running the property are subtracted from the net income from the operation — just as would be done in any other business. Among the expenses that can be charged off are interest on the mortgage, maintenance and repairs, agent's fees, utilities if you pay them, insurance premiums, annual depreciation, and improvements.

If there is anything we can do to help you in the field of real estate, please phone or drop in at FRISINGER REALTY CO., 935 S. Main St., Chelsea. Phone: 475-8681; evenings 475-2621. We're here to help!

Depreciation claimed must be subtracted from the cost of the

Athletes Honored at Fall Sports Banquet

Wednesday evening, Nov. 8, more than 100 Chelsea High school fall athletes, their parents and friends, and their respective coaches, packed the high school cafeteria and auditorium for the 1977 Fall Athletic Banquet.

Following a pot-luck dinner, award presentations were made to deserving athletes, and letters and certificates of participation were conferred upon fall team members in football, cheerleading, cross-country, and golf.

Golf was Chelsea's most successful sport this fall as team members recorded a second-place league finish this season. In other league results, the Bulldog harriers ended their year with a 5-4 record and fifth place in the SEC, while Chelsea's varsity grid squad wrapped up the year in a tie for fifth place with a 4-5 record.

Other season records included a 6-3 finish by the junior varsity football team, and a 1-6-1 finish by Chelsea's freshman players. Receiving special recognition among Chelsea High's varsity

gridders were senior Steve Pennington, voted Most Valuable Offensive Back; senior Don Harris, Most Valuable Lineman; junior Al Augustine, Most Valuable Defensive Back; senior Jim Bollinger, Most Valuable Defensive Lineman; senior Rick Beeman, Most Improved Back; and senior Phil Steinhauer, Most Improved Lineman.

Selected as tri-captains of the 1978 varsity football squad were Al Augustine, Tom Bareis and Jesse Coburn.

Second-year varsity awards went to Jeff Powell, Gary Packard, Steve Pennington, Don Harris, Rick Beeman, Bob Gottfried, Todd Headrick, Victor Verchereau, Jason Lindauer, Tom Bareis, Phil Steinhauer, James Bollinger, Dave Schrottenboer and Chuck Broderick.

Presented with first-year varsity awards were Jesse Coburn, Al Augustine, Doug Clark, Scott Stafford, Ray Sabo, Ben Kincer, Tim Bareis, Scott Powers, Bart Bauer, Scott Price, Robert Osterlander, Jim Brown, Jeff Elbler, Gary Thornton and Dan Gerstler. Phil Bareis, athletic director, again served as head varsity football coach this season, assisted by Jim Tallman and Richard Bareis. Team trainer was Jeff Kiel, while managers were Mark Bareis, Tom Hill, John Lane and Marty Steinhauer.

From the ranks of Chelsea's varsity cross-country squad, coached by Pat Clarke, Dave Dawson was honored as Most Valuable Runner for his second consecutive year. Pat Murphy took the award for Most Improved Runner, and will return next season as co-captain of the 1978 cross-country squad along with John Whitaker.

Of the 16 cross-country runners competing for Chelsea this season, third-year awards were presented to Dave Dawson and Scott Beyer, while second-year awards were received by Chris Minick and Steve Kvamberg.

Honored with first-year awards were Randy Harris, Jim Weidmeyer, Mark Shippy, Pat Murphy, John Whitaker, Mark Beyer and Theresa Hoffman. JV awards went to Brian Herrick, Randy Bohl, Gayle Beyer, Laurie Hastings and Mark Stevenson.

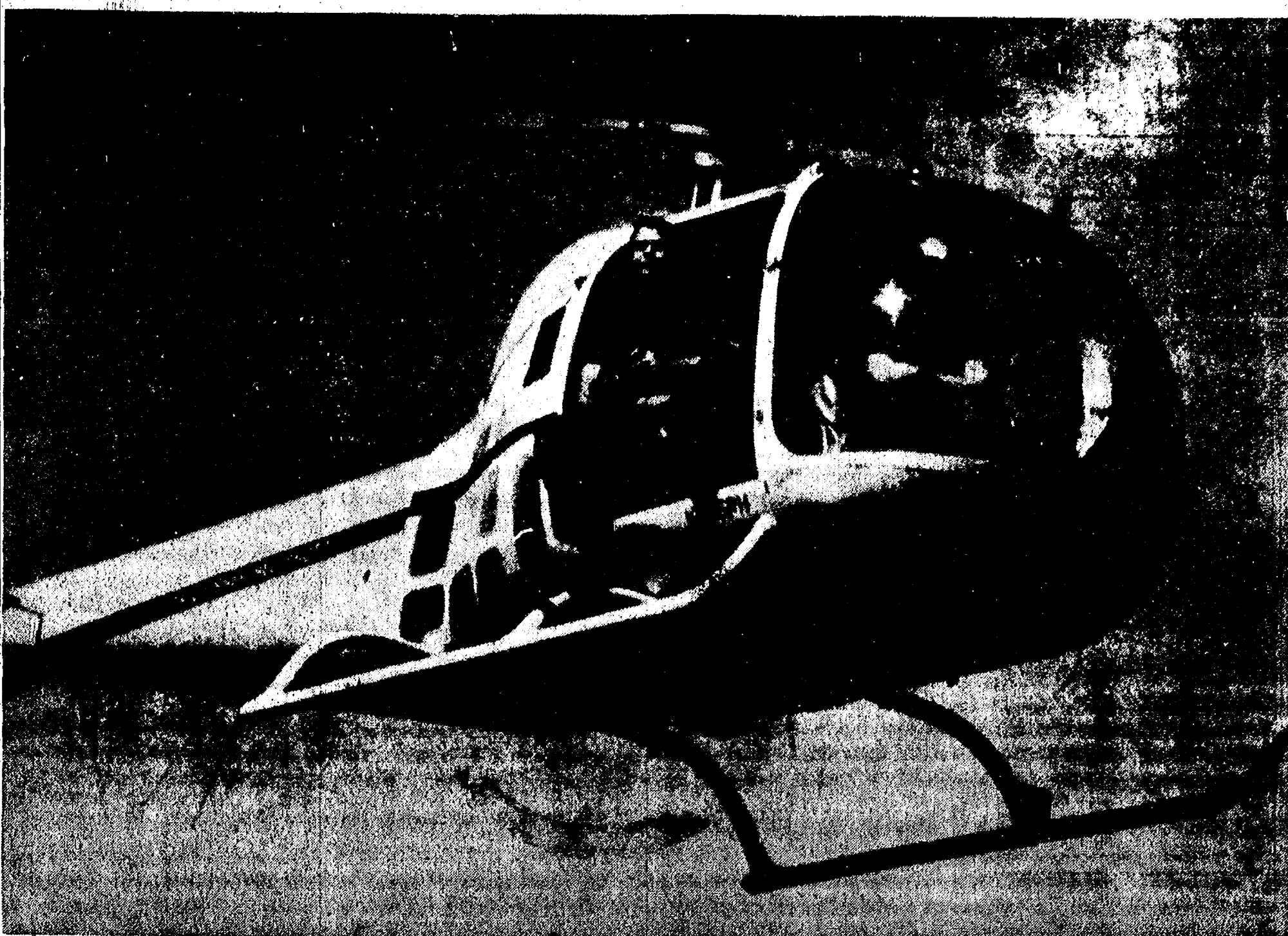
In golf, coached by Pat Wade, third-year varsity awards were presented to Brian Lewis and Charlie Bridges. Receiving second-year varsity awards were Joe Ewald, Bill Spaulding, Jeff Rabbitt and Mike Eisele, while Bruce Rabbitt was the sole collector of a first-year varsity award. (Continued on page 12)

THE CHELSEA STANDARD

Second Section

CHELSEA, MICHIGAN, THURSDAY, NOVEMBER 17, 1977

Pages 9-14



HELICOPTER PHOTOGRAPHER DALE FISHER of Notten Rd., perches on the doorstep of his helicopter a few miles above ground and scans the land below him for the perfect picture. At the helm of the helicopter is Fisher's chief pilot, Richard Jackson of Southfield. As owner and operator of Dale Fisher-Heli-Photo,

Fisher photographs a variety of subjects from the air, including construction sites, industrial facilities, rural homes and nature scenes. He currently has a photographic exhibit on display in the main office of Ann Arbor Federal Savings Bank in Ann Arbor. (Photo by Judy Fisher.)

Ingenious, Intense Dale Fisher Builds Unique Aerial Photography Business

For Dale Fisher of Notten Rd., a typical day begins with a trip to Ann Arbor Airport where he boards his helicopter, assembles his camera equipment, discusses the upcoming flight with his pilot, and lifts off the runway to start work.

Completing the core of his day's assignment while airborne, he returns to the airport, lands, and begins to lay the groundwork for his next job.

Fisher's business is helicopter photography, an occupation he forged for himself less than 15 years ago, when he decided "to do something different from other people."

In 1963, he formed his own company, Dale Fisher-Heli-Photo, and has been photographing everything from construction sites and multi-national corporations, to barnyard scenes in Sylvan township ever since.

At 44, Fisher commands attention as much for himself, as his career. Born in Ann Arbor in 1933, he began studying photography while attending Slauson Junior High school, where he was encouraged to pursue his budding interest in the field by his teacher, Myron Van Ellis.

When Fisher reached high school, he was adopted by a second mentor, physics teacher Malon Buehl. Buehl continued to groom Fisher's interest in photography and it was through the teacher's support that Fisher began looking for a part-time photography job.

Fisher was hired by Cliff Dey, owner of Cliff Dey's Studio which was then located on State St. in Ann Arbor, above the Nichol's Arcade.

"Dey was a portrait photographer, an old master, one of the best," Fisher recalls. "I learned a great deal from him, doing part-time wedding photography."

A year or so transpired, and in 1952, Fisher left high school to join the Navy. Because of his background, and talent behind the lens, Fisher was selected for training as a reconnaissance photographer.

He completed the Navy's aerial mapping school, photo interpretation school, motion picture school, and worked in a research testing program his last year, testing infra-red film under military conditions.

Finding challenge and purpose in what he was doing, Fisher began to seriously consider a Navy career. "I thought about it for some time before I finally concluded I didn't like the regimentation," Fisher confessed. Consequently, two days after completing a final photography class in the Navy, Fisher opted for a discharge.

Of that period, Fisher now says "I learned most of the techniques for what I do while in the Navy, at the expense of the government." He admits there probably would have been no other way to acquire such a vast amount of knowledge in his field.

Viewing his work, one is immediately glad Fisher was able to continue exploring different avenues of photography through the Navy. Producing awesome, but simple, graphic, yet sensitive images, Fisher can trans-

fer to film a fleeting but intense moment of natural beauty, or the raw power exhibited by the naked girders of a future landmark.

After receiving his discharge, Fisher returned to Ann Arbor and was hired by The Ann Arbor News as a staff photographer specializing in industrial stories.

He stayed with The News for approximately a year, from 1954-55. During that time, he started a color film processing service and advertising business. When the business expanded to the point where he was unable to work both as a news photographer and effectively operate his growing business, Fisher resigned from The News.

Continued success eventually led him to open a studio on Washtenaw Ave., near Industrial Hwy., in Ann Arbor.

In addition to doing different types of color photography, processing color prints, and operating a portrait studio, Fisher began experimenting with a specialized medical photography service, and established industrial photography accounts with the Bendix Corp., the now defunct Conductor Corp., and the National Sanitation Foundation.

Moving a step further, he began processing optical data and reproducing seismicographic readings through a laser scanner. Then, a growing economic downturn forced him out of business in 1963.

It was then that the independent and versatile Fisher decided to concentrate his efforts on a specialized branch of photography and chose helicopter photography as the medium for his new approach.

"My decision was made when I realized that there are really only a few good photographers," he explained. "It was either work at the very top, or with everyone else at the bottom where what you have is low-grade, low-priced competition."

Fisher further discovered that at least two reasons would keep those at the bottom-rung from apeing his transition.

"First, the expense to get started was so great, the average person was financially prevented from doing it; and second the camera equipment necessary for the job was simply not available."

With his knowledge of the camera and photography, and with the technical assistance of a long-time friend and camera expert, Fisher came up with a lens modification on which gave him a customized camera for his new approach.

Fisher doesn't compromise his accomplishment with a modest attitude. "I can now do things no one else can do," he declares openly. But because he cannot patent his invention, Fisher keeps it a well guarded secret.

He further maintains that the average photographer who could duplicate his invention would still find it difficult to mimic his work.

"Taking photographs from a helicopter is a matter of being able to visualize composition from the air while moving 65 miles per hour, and then being able to snap it within a matter

of seconds," Fisher says. "That's a skill I developed in the Navy. Fisher operates his present company from his home on Notten Rd., where he lives with his wife Judy and their children, Matt, Jodi, and Jeff. His wife is actively involved in the business, and often acts as his representative when he is unable to meet with a client because of a previous commitment."

Fisher originally leased rental helicopters for his work, but in February of this year, he purchased his own. "I decided I needed my own helicopter for 100 percent availability," he explained. "I also needed a more highly qualified pilot than I was able to secure while renting. It takes a pilot years before he is able to do some of the things I need him to do to get the photograph I want."

Thus along with buying a helicopter, Fisher employed two pilots. His chief pilot is Richard Jackson of Southfield, "the only living hijacked pilot in the world," Fisher jokes. Jackson was commandeered for a Jackson prison break nearly two years ago.

Fisher's other pilot is Brian McMann of Plymouth, who works for him on a part-time basis. Although Fisher purchased a helicopter for purposes of availability, he was confronted by a new problem. Because it is more economical for him to transport the helicopter to the location of some assignments than it is to fly it there, Fisher needed a vehicle which could transport the helicopter a sizeable distance without incurring any of its sensitive parts. None that were available met his specifications, so it fell upon Fisher to engineer a special trailer.

For this job, he enlisted the help of his wife, a neighbor, Mark Leidner, and a friend, "Lefty" Schanz, a Chelsea Chrysler Proving Grounds employee.

It took the four nearly 3½ months to complete work on the custom designed trailer, which was seen by many area residents in the 1977 Chelsea Community Fair Parade. In completing the trailer, the builders couldn't resist a parting shot. At the rear of the vehicle, they painted the words, "Low Flying Aircraft."

It would seem Fisher has now reached a satisfying plateau in his work. Yet, his creative drive refuses to stop.

His latest endeavors include expanding his business on a national basis (he plans to operate out of Florida and Arizona during the winter), compiling a catalogue to market large decorator prints, and producing a full-color picture book on Ann Arbor, as well as Michigan, with the idea of publishing books on other parts of the country if the first two are successful.

Two weeks ago, a photographic exhibit of some of Fisher's best aerial views of Ann Arbor went on display in the main office of the Ann Arbor Federal Savings, located at the corner of Liberty St. and S. Division in Ann Arbor.

The display, entitled "Ann Arbor—A New Dimension," contains photos that are part of a collection to be published in Fisher's book on Ann Arbor.

"In the past 14 years, I've developed helicopter photography to a highly sophisticated state, as evidenced by the exhibit," Fisher claims. "But I still feel like I'm only scratching the surface of what's available."

He says his current obsession is to educate the public to recognize what he feels has emerged as a revolution in photography. And it shouldn't be too difficult a task for a hard-driving, fertile-minded man like Fisher. To that end, he has already has the public exhibit, some soon-to-be published books, and a catalogue to his credit.

reached a satisfying plateau in his work. Yet, his creative drive refuses to stop.

His latest endeavors include expanding his business on a national basis (he plans to operate out of Florida and Arizona during the winter), compiling a catalogue to market large decorator prints, and producing a full-color picture book on Ann Arbor, as well as Michigan, with the idea of publishing books on other parts of the country if the first two are successful.

Two weeks ago, a photographic exhibit of some of Fisher's best aerial views of Ann Arbor went on display in the main office of the Ann Arbor Federal Savings, located at the corner of Liberty St. and S. Division in Ann Arbor.

The display, entitled "Ann Arbor—A New Dimension," contains photos that are part of a collection to be published in Fisher's book on Ann Arbor.

"In the past 14 years, I've developed helicopter photography to a highly sophisticated state, as evidenced by the exhibit," Fisher claims. "But I still feel like I'm only scratching the surface of what's available."

He says his current obsession is to educate the public to recognize what he feels has emerged as a revolution in photography.

And it shouldn't be too difficult a task for a hard-driving, fertile-minded man like Fisher. To that end, he has already has the public exhibit, some soon-to-be published books, and a catalogue to his credit.

CURTIS MATHES COLOR TV

Sale Now On

4-yr. parts warranty
4-yr. picture tube warranty
4-yr. chassis labor.

TOUCH TUNING
REMOTE CONTROL
COMBINATION COLOR TV
Also Black & Whites
WE TAKE TRADES

LOY'S TV

512 N. Maple Rd., Ann Arbor
Phone 769-4469
Welcome, Bank Financing,
Master Charge & BankAmericard

NOW ON TUESDAY NIGHTS

CHICKEN BUFFET



with our Famous Deep-Fried Chicken and SPECIAL BARBECUED CHICKEN also mashed potatoes and gravy, dressing, and salad bar.

Serving from 4:30-9:00
at the CAPTAINS TABLE
8093 MAIN ST., DEXTER PH. 426-3811

475-2030
475-8765

115 PARK ST.
CHELSEA, MICH.

MAYER AGENCY

(of Springer-Kleinschmidt Agency Inc.)

Your Local Independent Insurance Agency providing dependable protection and prompt claim payment through 10 of the nation's leading insurance companies.

HOME - AUTO - BUSINESS INSURANCE



Sheridan W. Springer

Charles A. Kleinschmidt

Ruth DeVine

Micky Quackenbush

RICK'S MARKET

20490 M-52 "The Store with the Spartan on the Door" Phone 475-2898

MUSSELMAN'S
APPLE
SAUCE

16 1/2-Oz. Can 35¢

Yellow Cling
Peach Halves

16-Oz. Can 41¢

KRAFT
MACARONI
and CHEESE
Deluxe Dinner

14-Oz. Pkg. 69¢

COMET
CLEANSER

17-Oz. Can 39¢

Thanksgiving

Don't Forget

To Order Early!

PIES
BREADS
DINNER
ROLLS

ECKRICH
SLICED
BOLOGNA

Reg. or Thick
1-Lb. Pkg. \$1.39

BORDEN'S
SUNDAE
CONES

6 pac 73¢

VELVET
PEANUT
BUTTER

32-Oz. Jar \$1.42

SPARTAN
SANDWICH
COOKIES

24-Oz. Box 79¢

BORDEN'S GLACIER CLUB

ICE CREAM . . 1/2 gal. 89¢

RICK'S HOT BREAD DAILY

Weekdays by 3:30 p.m. Sat. & Sun., by 10:30 a.m.

(QUANTITY RIGHTS RESERVED)

Ads
Taken
Till 1 p.m.
Tuesday

PUT IT IN THE WANT ADS FOR RESULTS

Just
Phone
475-1371

WANT ADS

The Chelsea Standard

WANT AD RATES

PAID IN ADVANCE—All regular ads are charged on a per line basis. Each line is 10 words. The first line of each ad is charged at the full rate. Subsequent lines are charged at 75% of the full rate. Ads are charged on a calendar basis. Ads are not accepted for less than 1 week. Ads are not accepted for less than 1 week. Ads are not accepted for less than 1 week.

CHARGE RATES—Single ads are charged at 10¢ per line. Regular ads are charged at 10¢ per line. Regular ads are charged at 10¢ per line. Regular ads are charged at 10¢ per line.

DISPLAY WANT ADS—Rate \$1.40 per line. Display ads are charged at 10¢ per line. Display ads are charged at 10¢ per line. Display ads are charged at 10¢ per line.

CARDS OF THANKS OR MEMORIALS—Rate 5¢ per line. Cards of thanks or memorials are charged at 5¢ per line. Cards of thanks or memorials are charged at 5¢ per line.

COPY DEADLINE—1 p.m. Tuesday. Copy deadline is 1 p.m. Tuesday. Copy deadline is 1 p.m. Tuesday. Copy deadline is 1 p.m. Tuesday.

ERRORS—Advertisers should check ads for errors. Errors are charged at 10¢ per line. Errors are charged at 10¢ per line. Errors are charged at 10¢ per line.

LEONARD REITH
Master Plumber

Licensed Electrician
Hot Water Heat

18238 N. Territorial
Rd.

Chelsea, Mich. 48118
Phone: 475-2044

McCulloch
Portable Generators

Chain Saws
WE SELL SERVICE,
SHARPEN AND TRADE.

Chelsea Hardware
21tf

Automotive
Rust Proofing
Cars and Trucks

Village
Motor Sales, Inc.
CHRYSLER - DODGE
PLYMOUTH - DODGE TRUCKS

Phone 475-8661
1185 Manchester Rd., Chelsea
Hours: 8 a.m. to 5:30 p.m.
Tues. thru Fri. Until 8 Monday
9 a.m. to 1 p.m. Saturday

CATERING—Small parties, hors d'oeuvres, a delicious pastries & specialty. Ph. 475-7678. x24

ELDERLY GENTLEMAN to share house and expenses in Ann Arbor. Ph. 971-0575. x23

WANT ADS

FOR RENT—American Legion Hall. 850. Call 475-7521. x20f

FOR RENT:

Music Machines

Juke Boxes

for Parties,

Receptions or

Any Special Gatherings.

CALL

Zemke

Operated Machines

Days 983-1771 x28tf

CORRECTIVE HORSESHOEING

and trimming. Mike Brinkley. Ph. 475-3038. x28tf

PRE-SEASON SALE

On All

SNOW TIRES

ALL TIRES

GUARANTEED

Full 4-Ply Polyester

Size Price Fed. Tax

A78-13 \$25.95 \$1.75

C78-13 \$27.95 \$2.01

C78-14 \$28.95 \$2.05

Belted

2 Polyester, 2 Fiberglass Belts

Size Price Fed. Tax

E78-14 \$29.95 \$2.27

G78-14 \$33.95 \$2.60

H78-14 \$35.95 \$2.83

G78-15 \$33.95 \$2.65

F78-14 \$32.95 \$2.43

H78-15 \$36.95 \$2.87

J78-15 \$38.95 \$3.03

RADIAL STEEL

Size Price Fed. Tax

BR78-13 \$41.95 \$2.11

ER78-14 \$46.95 \$2.49

FR78-14 \$47.95 \$2.69

GR78-14 \$50.95 \$2.89

GR78-15 \$52.95 \$2.97

HR78-15 \$54.95 \$3.15

JR78-15 \$57.95 \$3.31

LR78-15 \$59.95 \$3.47

FREE MOUNTING

BALANCING EXTRA

CHARGE CARDS ACCEPTED

Standard Oil

BankAmericard

Master Charge

American Express

Diners Clubs

Carte Blanche

(Offer expires Nov. 30, 1977)

Palmer Motor Sales

65 Years in Chelsea

Since April 15, 1912

Chelsea 475-1301 x24

DEER PROCESSING—Manchester Locker Plant, 319 Morgan St., Manchester. Ph. 428-7800. x24

HOUSE TO BE MOVED—2-bed room, aluminum siding. \$4,000. Ph. 475-8153. x23

WANT ADS

WEDDING STATIONERY—Prospective brides are invited to see our complete line of invitations and wedding accessories. The Chelsea Standard, 300 N. Main. Ph. 475-1371. x21f

STEP UP TO

KOZMA

CONSTRUCTION

And

Step

Down

In

Price

LICENSED

BUILDER

FREE ESTIMATES

COMPLETE

CONSTRUCTION

SERVICES

CALL

LEN KOZMA

475-7452

29tf

Stairway To Savings

STEP UP the 21 steps to our remanent room and save an additional 21% on any of over 100 carpets already substantially reduced. Good colors and sizes. Sale ends Sat., Nov. 12. Step on it.

MERKEL

Home Furnishings

x23

THORNTON

475-8628

BIG AND BEAUTIFUL building

site—4 1/2-acre parcel on quiet

country road. Owners anxious to

sell. \$10,500. x21f

TEN ACRES—Ideal for horses.

Area of attractive homes. Chelsea

schools. \$17,000. x21f

BUILDING SITE with access to

Williamsville Lake. Nice area.

Stockbridge schools. \$8,000. x21f

1/2 MILE WEST of Chelsea village

several 3 1/2 to 1 1/2-acre parcels.

Ranging from \$14,000 to \$25,000. Land contract possible.

ONE PLUS ACRE—All high with

pleasant view. Area of nice

homes. Close to Chelsea. \$11,500. x21f

ROBERT H.

THORNTON

JR., P.C.

REALTOR

Helen Lancaster 475-1198

Barb Rybak 475-8498

Pat Starkey 475-9544

George Knickerbocker 475-2646

Lang Ramsay 475-8133

Chuck Walters 475-2808

23tf

BUILDERS MODEL

FOR SALE

Open House

This Week-End

(Sat. and Sun., 1 to 5)

\$52,900 Moves You In

Includes fireplace, range, refrigerator,

garage grinder, dishwasher,

carpeting, two-car garage and

full basement, 1 1/2 country acres.

Chelsea schools. x23

Located 4 miles west of Dexter-

Pinckney Road.

Shown by appointment any evening.

WEBER HOMES

475-2828

FOR SALE—1968 Pontiac 4-door

Ph. 426-4009. x23

FOR SALE—'76 Ford E-150 van,

p.s., p.b., AM-FM, stereo, sun

roof, custom interior. Best offer.

Call 475-2388. x23

FOR SALE—LP gas heater, 50,000

BTUs, with electric blower. Excellent

condition. \$200. Ph. 475-2567.

evenings. x21tf

MAUSOLEUMS ★ MONUMENTS

BRONZE TABLETS ★ MARKERS

BECKER

MEMORIALS

6035 Jackson Road

ANN ARBOR, MICHIGAN

WANT ADS

CUSTOM

BUILDING

LICENSED & INSURED

FREE ESTIMATES

TOTAL

CONSTRUCTION

SERVICES

Homes, factories, warehouses

Pole buildings

Garages

Remodeling - Additions

Aluminum Siding

Roofing

Masonry Work, fireplaces, block

work, patios, etc.

SLOCUM

CONTRACTORS

& BUILDERS

Serving Washtenaw County

For Over 20 Years

20700 OLD US-12

CHELSEA

Phone 475-8321 or 475-7611

21tf

A fine selection of

New and Used Cars

for immediate delivery

Harper Pontiac

Sales & Service

475-1306

Evenings, 475-1608

40tf

— YOUNG —

We list and sell lake, country and

town properties. Eugene Young,

Real Estate & Builder, 878-3757

1596 Dexter-Pinckney Rd., Pinck-

ney 48169. x34tf

WE HAVE LISTINGS in the Dex-

ter, Chelsea, and lakes areas.

Call us for your next home.

ED COY REALTY

426-3948

Member Ann Arbor Board

of Realtors

Ed Coy 426-8235

Rae Kozlowski 426-8874

List your home with us

x10tf

New '77s and Demos

1977 BUICK Electra Limited 4-dr.

sedan, air cond. \$7100

1977 OLDS 88 Custom Cruiser Wag-

on 3-seat, air cond. Demo. \$6100

1977 OLDS Regency 2-dr., air cond. \$6875

1977 BUICK LeSabre Custom 4-dr.

sedan, air cond. \$5475

Special of the Week

1975 FORD GRANADA

2-dr., 6-cyl., auto., p.s., air,

one owner

\$2395

USED CARS

1976 BUICK LeSabre Custom 4-dr.

hardtop, air cond. \$3995

1975 MERC Cougar XR7 2-door

hardtop, air cond. \$5595

1974 OLDS Delta 88 Royale 4-dr.

hardtop, air cond. \$2495

1973 BUICK Electra 225 4-dr. hard-

top, air cond. \$2195

NEW HOURS

Mon., Tues., Wed., Fri. 8:00-5:30

Thurs., 8:00-9:00

Sat., 9:00-1:00

SPRAGUE

Buick-Olds-Opel, Inc.

1500 S. Main St., Chelsea

Ph. 475-8864

23tf

FOR SALE—1971 Ambassador

wagon. Low mileage, AC, p.s.,

p.b., auto. transmission, adjust-

able reclining seats. All new brakes,

four radial tires, transmission,

WANT ADS

HILLTOP, INC.

8316 WERNER RD., CHELSEA

We Do It All!

PLUMBING

HEATING

ELECTRICAL

LITTLE WANT ADS! BIG PLUSES FOR BIG RESULTS!

JUST PHONE
475-1371

WANT ADS

ELP WANTED — Experienced roofing and siding applicators. Apply at R. D. Kleinschmidt Co., 10 Riverside Dr., Manchester, Ph. 4-8836. x31f

Complete Body Repair Service

Bumping — Painting Windshield and Side Glass Replacement

Free Pick-up and Delivery Open Monday Until 8

CONTACT DON KNOLL FOR FREE ESTIMATE

Village Motor Sales, Inc.

CHRYSLER — DODGE YMOOUTH — DODGE TRUCKS

Phone 475-8861

185 Manchester Rd., Chelsea

Hours: 8 a.m. to 5:30 p.m.

9 a.m. to 1 p.m. Saturday

Tues. thru Fri. Until 8 Monday

DR SALE — Cadillac, 1975, \$4,100. Ph. 426-2605. x23

WATERLOO REALTY

CE 3-BEDROOM ranch home on one acre. One year old. Fully insulated. Aluminum siding. Large chert. Rec. room with bar in full basement. North of Stockbridge, 500.

ELL-DESIGNED, attractive new duplex. Spacious 2-bedroom units, each with own large utility room. Individual water, gas and sewers. Good income. Two lots. Village of Stockbridge, \$39,900.

CTURESQUE SETTING, large 3-bedroom farm house in good condition. Natural oak interior. Insulated, aluminum siding, w. roof, 4" well. Large barn with 8, 3 pole barns, 10 acres. Black road. Waterloo-Mumtuh area. \$9,900.

OVELY LARGE 4-BEDROOM ranch home (1,950 sq. ft.). Study fifth bedroom. Spacious carpeted living room, big family room, room in finished basement. Fully landscaped corner lot. Village of Chelsea, \$58,000.

ACRES — Beautiful woods. Will need some fill for drained field. Across from state land. Sured. Waterloo Rec. Area, 15 ft. from Chelsea, \$8,300. Land tract possible.

ACRES, excellent location near Waterloo Village. Chelsea schools, \$11,750. Land contract possible.

9 ACRES — Excellent choice of building sites. Area of newer homes. Stockbridge schools. 20 min. from Chelsea, \$15,500.

WATERLOO REALTY

355 Clear Lake

JOANN WARYWODA, BROKER

Phone 475-8674

enines and Sundays:

Ferry Gondek 475-8285

Paul Erickson 475-7902

Sue Lewie 1-517-522-5252

Carol Lakatos 475-7129

Evelyn White 475-7551

231f

AITRESS WANTED — Must be 18 years of age. Ph. 475-7605 or 2-2939, or apply in person after 4 p.m. Thompson's Pizzeria, Chelsea, x161f

JUST SELL — 1973 Chrysler Newport, AM-FM radio, air power brakes, power steering. Ph. 475-79, weekdays after 5 p.m. Any on week-ends. x24

WANT ADS

HOME TO SHARE in Waterloo Recreation Area. Mature female preferred. \$80 per mo. Share utilities and household responsibilities with three other adults. Horse facilities available. Ph. 475-7548, 201f

QUASAR TELEVISION Sales & Service

Service on most major brands. Also, antenna installation and antenna supplies.

PORTER'S TV

212 Buchanan St., Chelsea

Ph. 475-8380

HAWAII is where my company provided a vacation for me. If interested in how to qualify for a paid vacation send name, age and phone number to P. O. Box 809, Adrian, MI. 49221. x23f

FRISINGER

\$79,500 — 71-acre farm, Clinton schools, house not livable, but includes a 12'x50' mobile home.

\$53,500 — 2 1/2 acres, hilltop setting, 3-bedroom ranch. Chelsea schools.

\$34,900 — 2-bedroom home, Half Moon Lake, glassed-in porch, nice beach, dock included, Chelsea schools.

\$89,000 — 5-bedroom home, 3 baths, country kitchen, 40-foot family room with fireplace, 10 acres overlooking Four Mile Lake.

\$89,900 — 3 bedrooms, 3 baths, family room, super custom designed, quality built, 1.5 acres, central air, Chelsea schools.

FRISINGER REALTORS

Chelsea 475-8681

Eves:

Herman Koehn 475-2813

Paul Frisinger 475-2621

Bob Koch 426-4754

George Frisinger 475-2903

x231f

HELP WANTED

Daytime Dishwasher

10:30 a.m. to 2:30 p.m.

Monday thru Friday

Waitresses

Full- or Part-Time

Call Jim for appointment

SCHUMM'S

Ph. 475-2020 x24

Blanchard & Associates, Inc.

769-9492

CROOKED LAKE — 2-bedroom, immaculate, year 'round home. Nice screened-in porch on the lakefront. Gorgeous view. Chelsea schools. \$36,000. Eves., Mike, 434-5139; or Virginia, 475-2521. x23

PORTAGE LAKE — Sharp, 2-bedroom, year 'round home with access to lake. Super condition. Dexter schools. \$26,900. Eves., Mike, 434-5139; or Virginia, 475-2521. x23

FOR RENT — Quiet, comfortable apartment in country home for working single or married couple only. No pets or children. Utilities included. \$200 per month. References and deposit. Available Jan. 1. Reply to Box No. 17, in care of Chelsea Standard, Chelsea, x24

FOR SALE — Chevrolet wagon. Best offer. Ph. 475-9472. x23

BAHA'I OPEN HOUSE

Saturday, Nov. 19

from 8 to 10 p.m.

238 HARRISON ST., CHELSEA

SEEKERS WELCOME!

Ph. 475-2718 or 475-2769 x23

HELP WANTED

BARTENDER, daytime hours.

WAITRESS, part- or full-time evening hours.

Apply at

Chelsea Lanes

1180 M-52 Chelsea x24

Gallatin Realty Co.

"You Key To Every Door"

Yes, It's Working

3 1/2 %

Listing Commission

and Home Owners Like It

994-1202

NEW LISTING — Underpriced for quick sale. 5 bedrooms, family room, 2 fireplaces, dining room, in-ground pool, 2-car garage. And only \$48,500.

Gallatin Realty Co.

994-1202 x23

DRY CLEANING carpets is easier, faster and safer with HOST. Rent our machine. Merkel Home Furnishings, Chelsea, 475-8921. x23

WANT ADS

PIANO TUNING and repair. Qualified technician. Call Ron Harris, 475-7134. -101f

FOR SALE — Beautiful antique oak sewing machine. In good working condition. \$75. Ph. 663-8228. -x141f

WANTED — Plow ground and standing hay. Ph. 475-2771. 371f

PATCHING and PLASTERING. Call 475-7489. 331f

RON MONTANGE CONSTRUCTION

—Full carpentry services (rough & finish)

—Additions & remodeling

—Garages

—Repairs

—Roofing and Siding

—Cabinets & formica work

—Farm Buildings

—Excavating & trenching

QUALITY WORKMANSHIP FREE ESTIMATES

Ph. 475-1080 191f

November is Michigan Energy Awareness Month

Do you know where your energy dollar is going? We do! Free insulation estimates.

BTU Conservation

971-4900

Ann Arbor

AKC DOBERMAN stud service, excellent temperament, long-line champions. Must see to appreciate. Ph. 475-8289. x24

WANTED — Walnut trees and white oak. Ph. Don Patrick, 1-616-527-4499, or write Rt. 4, Ionia, MI. 48846. -34

LICENSED ADULT CARE HOME now open in Chelsea. Vacancies. For more information, contact S. Girard, 475-1808, or 475-7538. x23

FOR SALE — 1976 Yamaha Exciter, 440 cc, snowmobile with two-place trailer, with extra belt and tools. \$1,400 or best offer. 1965 1250 Volvo 4-door, good condition. \$450, with 2 snow tires. Ph. 475-2911. -x201f

PIANO LESSONS in my home, adults or children, experienced. Call Mrs. Hall at 475-9225. -22

PART-TIME HELP, evenings or early mornings. Top pay 2 to 4 hours each day. Ph. 426-3107 after 5 p.m., any time on week-ends. x23

BAHA'I OPEN HOUSE

Saturday, Nov. 19

from 8 to 10 p.m.

238 HARRISON ST., CHELSEA

SEEKERS WELCOME!

Ph. 475-2718 or 475-2769 x23

HELP WANTED

BARTENDER, daytime hours.

WAITRESS, part- or full-time evening hours.

Apply at

Chelsea Lanes

1180 M-52 Chelsea x24

Gallatin Realty Co.

"You Key To Every Door"

Yes, It's Working

3 1/2 %

Listing Commission

and Home Owners Like It

994-1202

NEW LISTING — Underpriced for quick sale. 5 bedrooms, family room, 2 fireplaces, dining room, in-ground pool, 2-car garage. And only \$48,500.

Gallatin Realty Co.

994-1202 x23

DRY CLEANING carpets is easier, faster and safer with HOST. Rent our machine. Merkel Home Furnishings, Chelsea, 475-8921. x23

FARLEY CONSTRUCTION

822 HOWARD RD.

ADDITIONS • REMODELING REPAIRS NEW HOMES

475-8265 or 475-7643

WANT ADS

CARPENTER WORK — Inside or out. Mr. Coburn, 475-2893. 101f

TORO SNOWMASTER 14, reg. \$189.95, sale \$179.95. Snowmaster 20, reg. \$259.95, sale \$229.95. Hackney Hardware, Dexter. 426-4009. x121f

FAMILY OF FOUR NEEDS 2 or 3-bedroom apartment or home in Chelsea school district. Ph. 428-7814, evenings. 101f

FOR RENT — Basement apartment near Chrysler Proving Grounds. \$195 including utilities. Non-smoking couple. No pets. Ph. 475-8334. x24

FOR SALE — 1975 Dodge pickup, low mileage, loaded with power and luxury options. Very clean. Ideal for camper or trailer. Must sell. Best offer. Ph. 475-7548. x211f

CERAMICS SHOP — Greenware, paints, supplies, firing. Classes day and evening. Start classes now in time to make Christmas gifts. Ph. (517) 596-2738. 24

JEE US for transit mixed concrete. Klump Bros. Gravel Co. Phone Chelsea 475-2530, 4290 Love and Rd., Grass Lake, Mich. x401f

TRAVEL TRAILERS — 13-ft. and up, 10x55 ft. trailers. John R. Jones Trailer Sales, Gregory, Mich. Phone 426-2745. 431f

74 TORONADO — Power seats, window, door and trunk locks, cruise control. Sharp. \$2,800. Ph. 475-7648, evenings. x23

LOST DOG — Coonhound—Treeing Walker, black, white, and brown. Reward \$300. Contact Milford Burke, 1-753-4110. x23

KNAPP SHOES

WITH CUSHIONED COMFORT

Walter "Joe" Keezer

475-2117 -x29

SUPERVISION

SEEKING aggressive male or female with leadership capabilities to fill Manufacturing Supervision position. High school diploma and diversified machine experience required, salary commensurate with ability and past experience. Full fringe benefits. Phone Chelsea (313) 475-8641, Ext. 251, for interview appointment. An Equal Opportunity Employer. x23

FOR SALE — 1975 light blue Dodge Tradesman 100 van, 3-speed, 6-cyl., dark blue carpeted interior. For more info, call 475-2913. x23

FOR SALE — 1972 Plymouth Satellite, automatic, small V-8, p.s., one owner, very little rust, \$750. Ph. 879-3824. 26

FOR RENT — Furnished apartment for one, in Chelsea. References; no pets. Ph. (517) 851-8301. x23

PIANO LESSONS in my home, adults or children, experienced. Call Mrs. Hall at 475-9225. -22

PART-TIME HELP, evenings or early mornings. Top pay 2 to 4 hours each day. Ph. 426-3107 after 5 p.m., any time on week-ends. x23

BAHA'I OPEN HOUSE

Saturday, Nov. 19

from 8 to 10 p.m.

238 HARRISON ST., CHELSEA

SEEKERS WELCOME!

Ph. 475-2718 or 475-2769 x23

HELP WANTED

BARTENDER, daytime hours.

WAITRESS, part- or full-time evening hours.

Apply at

Chelsea Lanes

1180 M-52 Chelsea x24

Gallatin Realty Co.

"You Key To Every Door"

Yes, It's Working

3 1/2 %

Listing Commission

and Home Owners Like It

994-1202

NEW LISTING — Underpriced for quick sale. 5 bedrooms, family room, 2 fireplaces, dining room, in-ground pool, 2-car garage. And only \$48,500.

Gallatin Realty Co.

994-1202 x23

DRY CLEANING carpets is easier, faster and safer with HOST. Rent our machine. Merkel Home Furnishings, Chelsea, 475-8921. x23

FARLEY CONSTRUCTION

822 HOWARD RD.

ADDITIONS • REMODELING REPAIRS NEW HOMES

475-8265 or 475-7643

WANT ADS

72 FORD SUPER VAN — Loaded. 302, auto, air, mags, wide tires, headers, side pipes, skylight, shag, FM-8 track. 51,000 miles. \$2500. Ph. 995-2003. -x91f

FOR SALE — Chrome trim rails for Ford 8-ft. pick-up, \$80. Ph. 475-2567 evenings. 221f

FIREWOOD — Seasoned, mixed hardwood. Cut, split, delivered. \$35 per face cord. Ph. 475-1968. -25

LOST — Parrot, in vicinity of Chelsea. Large red, blue and yellow. Any information leading to the return of parrot, \$200 reward. Ph. (313) 284-9248, collect after 4 p.m. x23

MATURE WORKING COUPLE looking to purchase two to 10 acres of property from local landowner in Chelsea school district. Please, no principals. Ph. 428-7814, evenings. 161f

FRESH FLORIDA FRUIT — For your family or as a gift. By the case: oranges \$9.50, tangelos \$9.50, grapefruit \$8.50. (Can mix.) Order now for delivery by Dec. 15. Ph. 475-2045. A Kiwanis project. 24

FOR SALE — 1976 Chevrolet, 24,000 miles. Ph. 475-1818 after 6 p.m. x23

FOR SALE — 1972 Bowes-Arrow camper trailer. 27-ft. Ph. 475-1689 evenings. -x23

FOR SALE — Dump truck, 1966, 5-yd. box, 6-cyl., 2-speed axle. Good box and tires. Phone (517) 596-2545, Muntih. x23

FOR SALE — Calculator incinerator, age unknown, east iron double kitchen sink with faucets, best offer. 4 chrome 14" wheels with tires, \$10 each. Ph. 475-9855. x23

FOR SALE — Unicorn log splitter for tractors, trucks and garden tractors, \$275 to \$325. Call 475-8316 for free demonstration. -x24

FOR RENT — Modern office in Dexter. New carpeting and d. \$150 per mo. Ph. 426-3223. -x24

FOR SALE — 250 ft. of 6" Cyclone fencing and 10' gate. Fisher plumbing piano. Ph. 498-2534, before 2 p.m. -x23

FOR SALE — 1963 Valiant, \$100 or best offer. Ph. 475-1250 after 5 p.m. x23

FOR SALE — Two E78-14 snow tires on Chevy Nova rims, \$30. Ph. 475-7462. x23

Legals

MORTGAGE SALE
Default having been made in the terms and conditions of a certain mortgage made by HUGH D. BRIGHTWELL and CAN-
DACE BRIGHTWELL, his wife, of Washtenaw County, Michigan, to WAYNE FEDERAL SAVINGS AND LOAN ASSOCIATION, NOW STANDARD FEDERAL SAVINGS AND LOAN ASSOCIATION, A Federal Association, of Troy, Oakland County, Michigan, dated the 31st day of April, 1971, and recorded in the office of the Register of Deeds for the County of Washtenaw and State of Michigan, on the 22nd day of April, 1971, in Liber 1353 of Washtenaw County Records, on page 36, in which mortgage there is claimed to be due, at the date of this notice, for principal and interest, the sum of Twenty Two Thousand Nine Hundred and 1/10 Dollars (\$22,900.10).
And said suit or proceedings at law or in equity having been instituted to recover

the debt secured by said mortgage or any part thereof, now, therefore, by virtue of the power of sale contained in said mortgage, and pursuant to the statute of the State of Michigan in such case made and provided, notice is hereby given that on Thursday, the 8th day of December, 1977, at 10:00 o'clock a.m. Local Time, said mortgage will be foreclosed by a sale at public auction to the highest bidder at the West entrance of the Washtenaw County Building in the City of Ann Arbor, Washtenaw County, Michigan, that being the Building where the Circuit Court for the County of Washtenaw is held, of the premises described in said mortgage, or so much thereof as may be necessary to pay the amount due, as aforesaid, on said mortgage, with the interest thereon at Seven and three quarters per cent (7 3/4%) per annum and all legal costs, charges and expenses, including the attorney fees and disbursements, which may be paid by the undersigned, necessary to protect its interest in the premises described in said mortgage, as described as follows: All that certain place or parcel of land situated in the Township of Ypsilanti in the County of Washtenaw

and State of Michigan, and described as follows: to-wit: Beginning at the Northeast corner of Lot 1 of the Southwest one-quarter of Section 17, Town 3 South, Range 7 East, of the Township of Ypsilanti, Washtenaw County, Michigan, as recorded in Liber 10 of the Plat, Page 40, Washtenaw County Records; thence South 89 degrees 11' 10" West 110.00 feet; thence North 89 degrees 11' 10" East 110.00 feet to the Point of Beginning; said parcel being a part of Lots 240, 241, 242 and 243 of said "Ypsilanti Subdivision," as recorded in Liber 127 of the Plat, Page 10, Washtenaw County Records. During the six months immediately following the sale, the property may be redeemed.
Dated at Troy, Michigan, October 13, 1977.

STANDARD FEDERAL SAVINGS AND LOAN ASSOCIATION, A Federal Association, Mortgagee.
Dykema, Gosselt, Spencer,
Goodnow & Trigg
Attorneys for Mortgagee.
2401 West Big Beaver Rd.,
Troy, Mich. 48064
Nov. 3-10-17-24-Dec. 1

MORTGAGE SALE
Default having been made in the terms and conditions of a certain mortgage made by MELVIN L. WALLIS and LINDA L. WALLIS, his wife, of Washtenaw County, Michigan, to WAYNE FEDERAL SAVINGS AND LOAN ASSOCIATION, NOW STANDARD FEDERAL SAVINGS AND LOAN ASSOCIATION, A Federal Association, of Troy, Oakland County, Michigan, dated the 31st day of April, 1971, and recorded in the office of the Register of Deeds for the County of Washtenaw and State of Michigan, on the 22nd day of April, 1971, in Liber 1353 of Washtenaw County Records, on page 36, in which mortgage there is claimed to be due, at the date of this notice, for principal and interest, the sum of Twenty Two Thousand Nine Hundred and 1/10 Dollars (\$22,900.10).
And said suit or proceedings at law or in equity having been instituted to recover

the debt secured by said mortgage or any part thereof, now, therefore, by virtue of the power of sale contained in said mortgage, and pursuant to the statute of the State of Michigan in such case made and provided, notice is hereby given that on Thursday, the 8th day of December, 1977, at 10:00 o'clock a.m. Local Time, said mortgage will be foreclosed by a sale at public auction to the highest bidder at the West entrance of the Washtenaw County Building in the City of Ann Arbor, Washtenaw County, Michigan, that being the Building where the Circuit Court for the County of Washtenaw is held, of the premises described in said mortgage, or so much thereof as may be necessary to pay the amount due, as aforesaid, on said mortgage, with the interest thereon at Seven and three quarters per cent (7 3/4%) per annum and all legal costs, charges and expenses, including the attorney fees and disbursements, which may be paid by the undersigned, necessary to protect its interest in the premises described in said mortgage, as described as follows: All that certain place or parcel of land situated in the Township of Ypsilanti in the County of Washtenaw and State of Michigan, and described as follows: to-wit: LEBANON ESTATES SUBDIVISION, Township of Augusta, Washtenaw County, Michigan, according to the plat thereof as recorded in Liber 17 of the Plat, Pages 47, 48 and 49, Washtenaw County Records.
During the six months immediately following the sale, the property may be redeemed.
Dated at Troy, Michigan, October 13, 1977.

STANDARD FEDERAL SAVINGS AND LOAN ASSOCIATION, A Federal Association, Mortgagee.
Dykema, Gosselt, Spencer,
Goodnow & Trigg
Attorneys for Mortgagee.
2401 West Big Beaver Rd.,
Troy, Mich. 48064
Nov. 3-10-17-24-Dec. 1

NOTICE OF MORTGAGE SALE
Default having been made in the terms of a mortgage made and executed by ROLAND G. BRYAN and ARLENE M. BRYAN, his wife, and JOHN A. CARY and ELIZABETH L. CARY, his wife, to CAPITAL MORTGAGE CORPORATION, dated February 18, 1972, and recorded March 8, 1972, in Liber 1388, Page 218, Washtenaw County Records, assigned by said Capital Mortgage Corporation to MORTGAGE SERVICES, INC., by assignment dated May 2, 1972, and recorded May 2, 1972, in Liber 1397, Page 50, Washtenaw County Records, and thereafter assigned by said assignee to FEDERAL NATIONAL MORTGAGE ASSOCIATION, a corporation organized and existing under the laws of the United States by assignment dated May 2, 1972, and recorded May 2, 1972, in Liber 1397, Page 51, Washtenaw County Records, on which mortgage there is claimed to be due at the date thereof for principal and interest, the sum of \$19,924.08.
Under the power of sale contained in said mortgage and pursuant to the statute in such case provided, notice is hereby given that on the 8th day of December, 1977, at 10 o'clock a.m. Local Time, said mortgage will be foreclosed by a sale at public auction to the highest bidder at the West entrance of the Washtenaw County Bldg. in the City of Ann Arbor, Washtenaw County, Michigan, that being the place where the Circuit Court for the County is held, of the premises described in said mortgage, or so much as may be necessary to pay the amount due, as aforesaid, on said mortgage, with the interest thereon at 7 per cent per annum and all legal costs and charges.
Said premises are located in the Township of Ypsilanti, Washtenaw County, Michigan, and are described as: Lot 125, Grove Park Homes Sub., as recorded in Liber 19, Pages 72 and 73 of the Plat, Washtenaw County Records.
The redemption period is six months from the time of sale.
November 1, 1977.
Federal National Mortgage Association
a corporation organized and existing under the laws of the United States
Assignee.
Leithausen and Leithausen, P.C.
18801 E. 8 Mile Road, Suite 215
East Detroit, Mich. 48021
Attorneys for said Assignee.
Nov. 3-10-17-24-Dec. 1

NOTICE OF MORTGAGE SALE
WHEREAS, default has been made in the terms and conditions of a certain mortgage made and executed by Richard C. Alexander and Grace Alexander, his wife, to the FEDERAL LAND BANK OF SAINT PAUL, a Federally Chartered Corporation, 375 Jackson Street, Saint Paul, Minn. 55101, dated August 30, 1974, and filed in the office of the Register of Deeds for Washtenaw County, Michigan on November 14, 1974 and recorded in Liber 1496 of Mortgages, pages 457-458 and, WHEREAS, the Federal Land Bank of Saint Paul is now the owner of said mortgage, and
WHEREAS, said mortgage contains a provision that if the mortgagee shall fail to pay or cause to be paid any of the installments mentioned in said obligation according to the terms thereof or shall fail to pay the taxes and assessments on said property at the same time and in the same manner as the same become due and payable, the entire indebtedness secured by said mortgage shall thereupon become due and payable, and said mortgage subject to foreclosure at the option of the mortgagee, and
WHEREAS, the mortgagee have failed to pay or cause to be paid the installments mentioned in said obligation according to the terms thereof and by reason thereof Federal Land Bank of Saint Paul, under the provisions above referred to has elected to declare the entire indebtedness secured by said mortgage due and payable at once, and
WHEREAS, the amount claimed to be

KEN OSBORNE INSULATION CONTRACTOR

- ★ Blown in side walls and attic.
- ★ R = 4.17 per inch.
- ★ Resists fire and moisture.
- ★ Lightweight.
- ★ Meets Federal Specification HH-1.515.
- ★ This insulation made from 100% wood fibres.

KEEP COOL & SAVE FUEL.
DON'T WAIT TOO LONG,
IT'LL COST MORE LATER.

35 years in the building and insulation business in this area.
FREE ESTIMATES

KEN OSBORNE
Ph. (517) 851-7497
ALUMINUM STORM WINDOWS
AND DOORS

Athletes Honored at Fall Sports Banquet

(Continued from page nine)

Junior varsity golfers honored with letters were John Daniels, Steve Heydlauff, Bob Aldrich, Dave Wilson, Mark Barnes, Doug Bowen, while numerals went to Randy Lulick, John Rowe, Andy Altrows and Joe Krachbaum.

Two team members shared the Most Valuable Offensive Back billing on Chelsea's junior varsity squad, coached by Jon Schaffner. The two were John Dunn and Mike Wood. Also selected for special awards were Dan Paglari, Most Valuable Defensive Back; Dave Morris, Most Valuable Lineman; and George Egeler, Most Improved Player.

Second-year junior varsity football awards were presented to Shawn Murphy, Dan Kolderer, Jon Labarbara and Louis Jahnke. Receiving JV letters were John Dunn, Mark Schanz, Jim Cobb, Mike Wood, Dan Paglari, Mark Cole, Howard Flinton, Brad Knickerbocker, Dave Elsie, Keith Stillion, Dave Morris, Dan Rowe, Steve Hawker, Andy Weir, Todd Wright, Tom Gibeath, Tim Sweeney, George Egeler, Tom Houle, Brad Flanagan, Karl Albrecht, Mike Killelea, Dave Gattak, Jeff Boyer and Dave Beaver.

Assistant JV football coach for the 1977 season was Tom Neumann. Pat Rowe and Darren Rowe were junior varsity grid managers.

Top awards among players on

Chelsea's freshman grid squad went to Bill Freeman, chosen Most Valuable Player and Outstanding Back; Mike Wade, Outstanding Lineman; Steve Wilson, Best Defensive Player; Scott Chapman, Most Improved Player; and Jeff Dils, Most Team Spirit.

Numerals were presented to Carl Simpson, Jon Reimenschneider, Jeff Dils, Jeff Price, Steve Wilson, Ken Elliott, Ken Cobb, Bill Freeman, Sean Peterson, Mark Steinaway, Brian Dault, Sandy McLaughlin, Leo Hafner, Todd Oxner, Mike Lazarz, Kirk Stubbs, Keith Hegadorn, Ken Hopkins, Chan Lane, Mike Wade, Chris Heaton, Eric Headrick, Art Rowe, Craig Thams and Scott Chapman. Assisting freshman football coach Bill Bainton were team managers David Lane and David Merkel.

Coach Helen Bareis presented varsity cheerleading awards to the seven members of her squad. They included Carrie Lane, Anna Crawford, Kim Olson, Connie Connelly, Laurie Campbell, Beth Collins and Cathy Villeneuve.

Junior varsity cheerleading awards went to Jeanette Morrison, Sara Haselschwardt, Chris Check, Valisa Pletcher and Tracy Catell. Coaching this year's squad was Vi Morrison.

As coach of the freshman cheerleading squad also, Mrs. Morrison presented first-year cheerleading awards to Angie Inglis, Pris Drew, Beth Bosh, Teek Villeneuve and Diane Thompson.

TRAVEL WITH PEOPLE YOU KNOW!

United Church Travelers invite you to join them.

HAWAII

14 Nights - 4-Island Tour, plus two days in Los Angeles included.

DEPARTING FEBRUARY 17, 1978

Contact: Rev. R. J. Ratzlaff, Host-Director

170 ORCHARD ST., CHELSEA, MICH. 48118

Phone (313) 475-7307

Please Notify Us

In Advance of

Any Change in Address

Do-it-yourself Supervision
Earns a SPECIAL DISCOUNT

Right now, you can save the most money possible by sharing the work. You agree to supervise installation, help clean up and release our crew from need to come back, and we share the cost of labor saved with you, in the form of a substantial discount.

Call today for a free estimate and inspection.
Phone 313-475-1625

FOAM MASTERS
115 E. Summit • Chelsea.

ZEEB RD. GULF Northex Permanent ANTI-FREEZE

\$2.59 With Coupon and \$5 Gas Purchase (Limit 2 per coupon)

Additional Gallons \$2.99 each

We Accept
MASTER
CHARGE

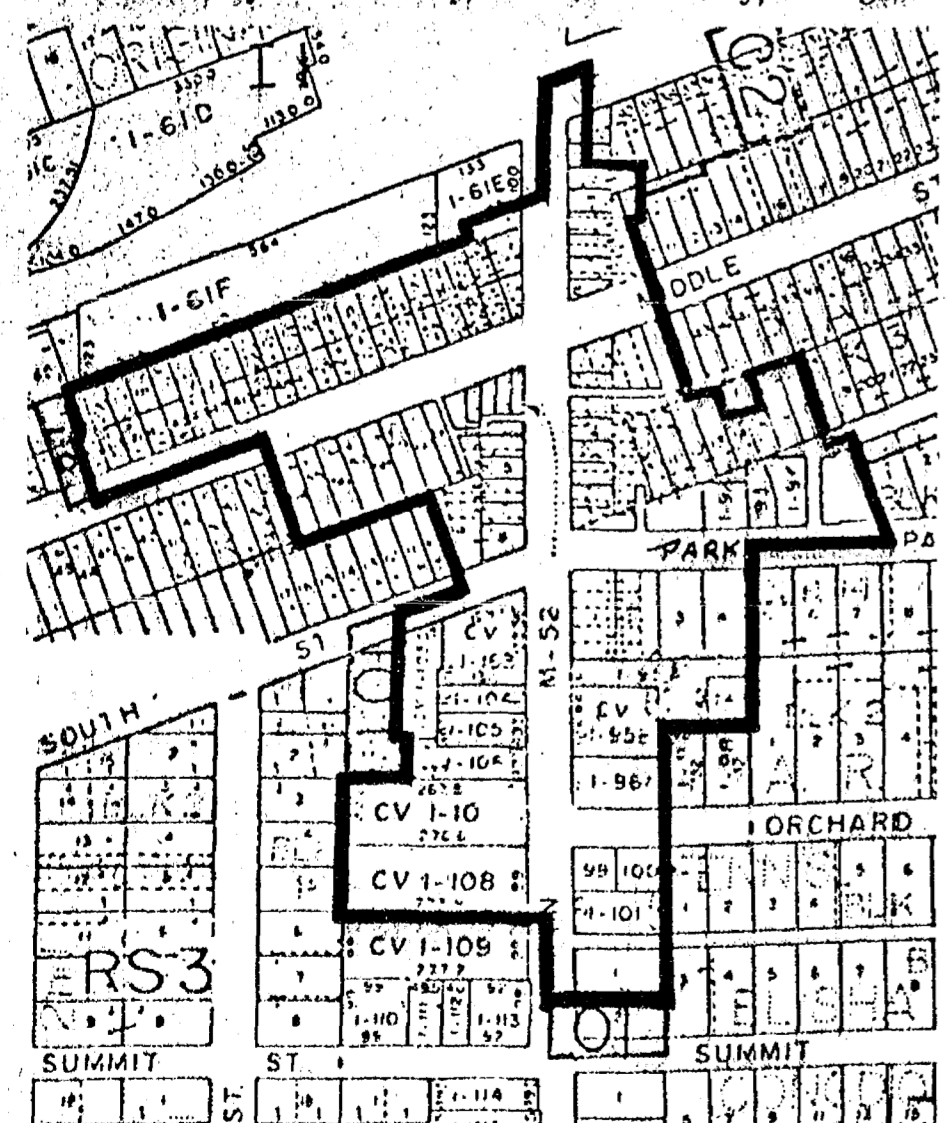
BANK
AMERICARD

COUPON
NORTHEX PERMANENT
ANTI-FREEZE
\$2.99 gallon
With \$5 Purchase
Limit 2 gals. per coupon
(Expires 11-30-77)

ZEEB RD. GULF

293 N. Zeeb at I-94

Open 7 a.m. Mon. through Sat.



The aforesaid hearing will be held in the Council Room in the Municipal Building on Tuesday, December 13, 1977 at 7:30 o'clock p.m. The intentions, uses and regulations of the "C-5 CENTRAL BUSINESS DISTRICT" are on file in the office of the Village Administrator and may be examined prior to the date of the hearing.

VILLAGE OF CHELSEA
FREDERICK WERN, ADMINISTRATOR

2001

It's Rampy's theory that if you spend time, effort and money to see that your customers are satisfied, they'll come back again... and again.

That's exactly why Rampy recently bought the most modern computer diagnostic system available, The Sun 2001. It's one of the few things in this world that seems to make everyone happy.

The mechanics like it because it makes their job easier... it can spot a small problem before it develops into a big one... and it saves a lot of sweat looking for problems that just don't want to be found.

Customers like it because the computer print-out they receive allows them to see just exactly what was needed to get their cars running at peak performance. And, that means fewer service calls in the long haul. The real problems are spotted right away.

And Rampy likes it because he can see it helps keep his customers satisfied.

Bring your car in for a taste of the future today... the Sun 2001... at Rampy Chevrolet.

Rampy CHEVROLET
CORNER JACKSON & WAGNER RDS., ANN ARBOR, PHONE 663-3321

BOWLING NEWS

Senior House League

Standings as of Nov. 14

W	L
Captains Table	49 21
Schneider's Grocery	49 21
Mark IV Lounge	46 24
Washtenaw Crop Serv.	45 25
Bauer Builders	43 27
S. J. Custom Service	40 30
Sylvan Center	40 30
Chelsea Grinding	39 31
Village Motor Sales	39 31
McCalla Feeds	37 33
Frank Grohs Chevrolet	36 34
Wolverine Tavern	34 36
K. of C.	33 37
Steele's Heating	31 39
Gambles	25 45
Wal's Barber Shop	21 49
Central Fibre	17 53
Deansburro	6 64

600 series: B. Stacey, 614.
525 and over series: J. Eder, 553; G. Linebaugh, 539; J. Harok, 571; J. Collins, 548; M. Poertner, 589; N. Fahrner, 572; D. Eder, 568; C. Miller, 529; L. Bauer, 551; T. Steele, 540; W. Brown, 555; H. McCalla, 520; B. Ervin, 584; D. Hatley, 599; E. Baku, 542; E. Harok, 541; M. McAllister, 533; W. Westphal, 540.
210 and over games: W. Westphal, 218; P. Kelly, 221; J. Eder, 214; G. Packard, 213; D. Hatley, 220; B. Ervin, 210; B. Stacey, 244; L. Bauer, 210; J. Harok, 211.

Rolling Pin

Week of Nov. 15

W	L
Grinders	32 12
Mixers	30 14
Egg Beaters	28 16
Moppper Uppers	28 16
Poachers	27 17
Sugar Bowls	24 20
Blenders	24 20
Sporadic Spatulas	23 21
Sugar & Spice	22 22
Kitchen Kapers	22 22
Spooners	22 22
Coffee Cups	21 23
Beaters	21 23
Pots	19 25
Brooms	17 27
Jelly Rollers	17 27
Kookie Cutters	10 34
Jolly Mops	9 35

500 and over series: P. Poertner, 513; K. Hamel, 508; E. Heller, 518.
425 and over series: J. Cronkite, 434; L. Volta, 494; A. Classon, 444; G. Smith, 484; C. Shepherd, 430; R. Foster, 459; J. Shepherd, 452; D. Klink, 447; G. Clark, 460; G. Klink, 496; E. Whitaker, 448; P. Harok, 455; S. Roehm, 433; E. Williams, 482; R. Musbach, 429; C. Dmoch, 435; P. Borders, 434; S. Parker, 459.
150 and over games: J. Lingerfelt, 163; B. Selwa, 150; T. Doll, 170; P. Poertner, 171, 184, 188; J. Cronkite, 157; J. Ingraham, 163; J. Ferry, 155; K. Hamel, 151, 154, 203; L. Volta, 173, 150, 171; B. Roberts, 159; A. Classon, 175; G. Smith, 178, 158; C. Shepherd, 150, 153; R. Foster, 187, 152; J. Shepherd, 159; 157; D. Klink, 181; G. Clark, 181; G. Klink, 155, 179, 162; E. Whitaker, 157; V. Workman, 183; P. Harok, 174; S. Roehm, 163; E. Williams, 176, 179; R. Musbach, 177; P. Wurster, 157; C. Dmoch, 155, 159; E. Heller, 185, 190; S. Van Natter, 150; E. Gibb, 185; P. Borders, 153, 163; S. Parker, 158, 165.

Women's Bowling Club

Standings as of Nov. 9

W	L
Washtenaw Engineering	27 12 1/2
Jiffy Mixes	25 15
Parish Cleaners	25 15
Wolverine Bar	24 16
Wolverine Supply	24 16
Norris Electric	23 17
Chelsea Milling	23 17
Rose-Jack Farms	22 18
Heller Electric	18 21 1/2
Palmer Ford	18 22
Good Time Girls	18 22
Klink Excavating	17 23
Thompson's Pizza	16 23 1/2
Laura's Beauty Salon	16 23 1/2
Rosenreiter Brothers	16 24
Chelsea Card & Gift	14 25 1/2
Lloyd Bridges Chevrolet	14 25 1/2
D. DeBurring	14 23

200 and over games: J. Hafner, 231; C. Collins, 212.
150 and over games: R. Hummel, 179, 176; R. Lutosky, 186, 177; P. Wurster, 168; N. Kern, 184, 160; G. Wireman, 153; C. Bradbury, 187, 177; T. Kenney, 157; R. Verwey, 150; K. Milliken, 155, 168; T. Tee, 180, 160; D. Frisbee, 150; S. Klink, 177; D. Judson, 167, 157; A. Fahrner, 152; M. Fahrner, 150; N. Packard, 199; D. McCalla, 174; S. McCalla, 164; K. Powers, 161; T. Pouty, 155; L. Aker, 155; S. Ritz, 169; B. Gross, 156; C. Parsons, 152; C. Scherdt, 175; J. Fitzsimmons, 161, 159, 185; A. Sidlinger, 168, 184; J. Hafner, 158; P. Fitzsimmons, 189; P. Poertner, 170, 151; G. Dan, 157; D. Eisenbeiser, 165; J. Alber, 150; L. Hafner, 185; B. Bauer, 150.

450 and over series: D. Judson, 467; L. Hafner, 464; T. Tee, 476; S. Klink, 468; C. Collins, 493; A. Sindlinger, 477; P. Fitzsimmons, 455; P. Poertner, 490; R. Hummel, 481; R. Lutosky, 463; C. Bradbury, 499.

500 series and over: J. Fitzsimmons, 505; J. Hafner, 535; N. Kern, 532.

Chelsea Lanes Mixed

Standings as of Nov. 11

W	L
Hawler Truck Repair	43 27
Ken's Glass	42 28
Wire & Fire	42 28
Fed. Screen Outlaws	40 30
The Question Marks	37 33
Bollinger's Sanitation	37 33
Accra Gage	37 33
VFW	35 35
Roadrunners	35 35
The Bandits	32 38
Get Downers	31 39
Fireballs	31 39
Ann Arbor Centerless	27 43
Fox Point Flashes	21 21

Women 425 series and over: J. Norris, 456; L. Behnke, 470; S. Wohlgenuth, 455.
Men 475 series and over: K. Finrock, 532; A. Oesterle, 498; E. Vasas, 514; A. Wisniewski, 525; A. Sannes, 501; G. Kent, 539; J. Richmond, 532.

Women 150 games and over: S. Ellenwood, 153; S. Centilli, 162; J. Norris, 159, 177; L. Behnke, 154, 171; D. Black, 153; S. Wohlgenuth, 172; D. Hawley, 175; D. Keizer, 150.

Men 175 games and over: K. Finrock, 193, 209; A. Oesterle, 205; E. Vasas, 200; A. Wisniewski, 196, 190; A. Sannes, 198; D. Bolanowski, 180; N. Lee, 177; G. Kent, 176, 192; J. Richmond, 180, 182.

Chelsea Suburban

Standings as of Nov. 9

W	L
Frisinger Realty	60 23
Dairy Queen	57 31
Mark IV Lounge	52 36
Dana De-Lites	46 42
Fletcher Mobil	46 42
Ricardo's	46 42
Dancer's	44 44
Waterloo Garage	43 45
Chelsea State Bank	42 46
State Farm	36 52
Chelsea Drug	34 54
Chelsea Assoc. Builders	22 66

150 games and over: D. McAllister, 188, 182; D. Keizer, 169, 156; N. Packard, 160, 160, 183; T. Monroe, 155; J. Baku, 156, 187; B. Loucks, 150; M. De La Torre, 176, 153; J. Speer, 153; E. Figg, 158, 188; E. Miller, 170; M. Usher, 191; N. Collins, 177; F. Cole, 187; K. Chapman, 155; V. Weber, 187; G. De Smither, 157; M. Vasas, 177, 174; A. Hocking, 182, 185; C. Stoffer, 174; D. Hawley, 178; B. Kunzelman, 162, 188; P. Harok, 163, 150; S. Bowen, 173; B. Halper, 176; M. Neal, 152; B. Fike, 169, 158, 154; B. McGibney, 152, 166; R. McGibney, 171, 159; C. Tryand, 150; D. Orloski, 159; P. Schaff, 153; N. Prater, 164, 151; S. Schulz, 178; E. Schulz, 171; S. Nicola, 151; A. Bohn, 198; J. Schulze, 172; D. Varjo, 168; L. Reeman, 159, 152.

425 series and over: D. McAllister, 511; N. Packard, 503; D. Keizer, 471; M. De La Torre, 467; A. Bohn, 484; S. Schulz, 440; J. Schulze, 437; L. Beeman, 438; N. Prater, 425; B. Fike, 481; R. McGibney, 479; D. Hawley, 455; B. Kunzelman, 469; P. Harok, 457; B. Hatley, 431; B. McGibney, 448; F. Cole, 461; K. Chapman, 448; V. Weber, 428; M. Vasas, 448; A. Hocking, 482; M. Usher, 443; N. Collins, 461; E. Figg, 474.

Junior House League

Standings as of Nov. 10

W	L
Broderick Shell	55 22
Mark IV Lounge	53 24
Mac Tools	47 30
Chelsea Lanes	45 32
Boyer Automotive	44 33
D. D. DeBurring	44 33
Killins Concrete	44 33
Smith's Service	40 37
Hanco Sports	39 38
Ynsi Asphalt	38 39
Rockwell International	38 39
Lloyd Bridges Chevrolet	37 40
S-D Sales & Service	35 42
Mich. Livestock Exch.	34 43
Slocum Contractors	32 45
Washtenaw Engineering	31 46
Perfect Fit Seat Covers	27 50
Roberts Paint & Body	10 67

500 series: J. Collins, 605; N. Fahrner, 619; J. Yelsik, 619.
525 and over series: J. Harok, 529; D. Weatherwax, 590; M. McAllister, 564; A. Fleischmann, 558; L. Bauer, 528; J. Rigner, 526; P. Kelly, 573; A. Sannes, 560; W. Beeman, 569; T. Dittmar, 581; J. L. Yleria, 555; R. Harris, 527; G. Ahrens, 568; L. Mull, 525; L. Tennant, 584; J. Marshall, 548; D. Coppernoll, 575; B. Kaiser, 526; T. Statford, 539; B. Smith, 591.

210 or over games: J. Collins, 220; D. Weatherwax, 213, 221; N. Fahrner, 228; J. Yelsik, 215, 225; A. Fleischmann, 223; L. Bauer, 213; T. Dittmar, 218, 216; J. L. Yleria, 213; T. Baker, 214; D. Coppernoll, 212; J. Marshall, 214; B. Smith, 245; R. Dilliner, 210.

Leisure Time League

Standings as of Nov. 10

W	L
Unpredictables	28 12
Wifits	26 14
Croquet	23 17
Four Stooges	22 17 1/2
Mamas & Grandmas	22 17 1/2
Sugar Loafers	22 18
Afternoon Delights	21 19
Lady Bugs	18 22
Roadrunners	17 23
Holy Rollers	16 24
Stowpokes	13 27
Rug Rats	11 29

500 series: M. Schauer, 510; G. Haskell, 531.
400 series: S. Centilli, 414; D. Thompson, 459; K. Haywood, 412; G. Wheaton, 484; S. Weston, 417; B. Tison, 436; D. Dault, 475; L. Longe, 406; E. Heller, 475; B. Robinson, 442; S. LaRoche, 428; R. Musbach, 412; S. Bowen, 486; P. Muncer, 437; M. Herrin, 413; N. Primrose, 470.

Games 140 and over: D. Mesing, 140; P. Whitesall, 146; S. Centilli, 151, 145; D. Thompson, 186, 141; K. Haywood, 160; G.

Wheaton, 140, 149, 195; V. Meyer, 140; S. Weston, 137, 145; P. Velgang, 143; C. Hoffman, 151; S. Weber, 166; B. Tison, 168, 150; L. Haller, 144; D. Dault, 183, 155; A. Vander Waard, 141; M. Schauer, 182, 145, 183; L. Longe, 143, 141; J. Staphish, 166; R. Forner, 152; E. Heller, 150, 159, 166; B. Robinson, 165, 145; S. La Roche, 172; R. Musbach, 153; G. Haskell, 167, 169, 195; S. Bowen, 185, 155, 146; P. Muncer, 144, 156; M. Herrin, 162; N. Primrose, 190, 162; W. Picklesimer, 184; K. Herman, 132; E. Williams, 153.

Seven Point Mixed

Standings as of Nov. 8

W	L
Team No. 1	52 25
CB's	49 28
Crass Lake Auto	44 33
Strike Outs	39 38
Jiffy Mixers	36 41
Utros	36 41
Wild Women	36 41
Andy's Raiders	35 42
Devauder Farms	35 42
Elliott and Sons	23 54

High team series: CB's, 1,947.
Men, high series: G. Beeman, 565; D. Carpenter, 554.
Women, high series: P. Scherdt, 495; J. Farley, 468; A. Dowhal, 468.

High team game: CB's, 703.
Men, high game: D. Carpenter, 209; G. Beeman, 208.
Women, high game: A. Dowhal, 175; B. Carpenter, 173.

Bulldogs Mixed

Standings as of Nov. 10

W	L
D-D DeBurring	33 11
Ren-A-Barn	26 18
Spadafore Stores	24 20
Goofers	23 21
Smith's Service	21 23
B-E-C	21 23
Steele's Heating	20 24
Richardson Asphalt	19 25
Durussell, Inc.	17 27
Norm's Sales	16 27

Men's high games and series: B. Smith, 195, 183, 517; T. Colvia, 190, 518; D. Barnhill, 183; D. George, 191.

Women's high games and series: C. Grammatico, 201, 475; J. Kaiser, 181, 184, 514; L. Burkhardt, 162; J. Pagliarini, 165.

Nite Owl League

Standings as of Nov. 14

W	L
Norm's Body Shop	51 19
VFW	48 24
Nu-Yu Boutique	48 24
Ganja Oil	48 24
Chelsea Automotive	45 25
K. of C.	40 30
Doug's Painting	35 32
Thompson's Pizza	37 33
Mark V	35 35
Wahl Oil	34 36
Hanco Sports Center	33 37
Chelsea Finance	30 40
Ted's Waterloo Garage	28 42
Cavanaugh Lake Store	28 42
A. D. Mayer Agency	28 42
Alley Rats	25 45
AI's TV	23 47
Fitzsimmons Excavating	17 53

200 games: D. Eder, 226, 204; T. Jarvis, 213; D. Heeter, 203; R. Zatorski, 210; F. White, 202; K. McCalla, 219; T. Mead, 224.

500 series: R. Duncan, 541; W. Elliott, 507; R. Janich, 507; D. Nicewicz, 516; R. Zatorski, 581; K. Platt, 523; D. Bieske, 513; D. Heeter, 549; G. Hansen, 501; L. Miller, 508; K. McCalla, 543; J. Sweet, 503; T. Mead, 539; E. Baku, 521; J. Jarvis, 504; W. Cozzens, 518, 600 series: D. Eder, 620.

Charlie Brown & Snoopy Peanut League

Standings as of Nov. 12

W	L
Dana Chargers	26 4
Bowling Bulldogs	20 10
Red Barons	17 13
Snoopy Raiders	17 13
Bad News Bears	14 15
Super Stars	12 17 1/2
Road Runners	8 22
Cool Cats	5 24 1/2

Games 70 and over: D. Collins, 108, 122; D. Baku, 117, 105; R. Loucks, 75, 73; H. Morrell, 103, 125; C. Schulze, 74, 118; T. Harok, 86, 107; K. Fletcher, 91; S. Carpenter, 85, 116; C. Baker, 98, 79; B. Robeson, 75; D. Zainb, 75; L. Walton, 62; J. Settle, 72; J. William, 94, 71; J. Boyer, 73; J. Waldyke, 70; B. Nevert, 74, 83.

Series 100 and over: D. Collins, 230; D. Baku, 222; R. Loucks, 148; H. Morrell, 230; C. Schulze, 192; C. Alexander, 121; T. Harok, 193; K. Fletcher, 159; J. Pelsch, 110; S. Carpenter, 201; C. Baker, 177; B. Robeson, 121; M. Anderson, 116; D. Zainb, 141; L. Walton, 153; T. Rowe, 110; J. Settle, 120; J. Boyer, 120; J. Waldyke, 108; B. Nevert, 162.

Unknowns League

Standings as of Nov. 9

W	L
Strikers	59 25
Streakers	47 37
Independents	46 38
Shady Ladies	39 45
Pin Dusters	31 53
Fascinating "G"	30 54

425 and over series: S. Steele, 465; M. Eeles, 435; M. J. Gipson, 431; D. Verwey, 491; J. Murphy, 457.

140 and over games: D. Bentley, 157, 144; C. Fleischmann, 141;

Jerry Bridges Helps College Auto Show

Jerry Lloyd Bridges, of Chelsea, has been involved in the planning, organizing and staffing of one of the largest new model auto and parts shows in the Midwest.

Bridges, a freshman at Midland's Northwood Institute where he is studying automotive marketing, served as a member of the major home team for the 14th annual Northwood Auto, Truck and Parts Show, a student-run event that features hundreds of vehicles and parts displays.

Thousands attend the auto extravaganza, held each October on Northwood's Midland campus. Bridges is the son of Mr. and Mrs. Lloyd Bridges, also of Chelsea. Mr. Bridges is owner of Lloyd Bridges Chevrolet.

Northwood Institute is the only college in the country which has worked directly with the National Automobile Dealers Association (NADA) in the development of an automotive marketing educational program.

Telephone Your Club News To 475-1871.

More than 250,000 infants are born each year with birth defects, the most serious child health problem in the United States, reports The National Foundation-March of Dimes.

Get Out of That Rut . . . DON'T BE A "STUCK IN THE MUD"

Call M & M GRAVEL CO.

Repair Your Old Driveway Or Build A New One!

WE CAN DO THE JOB . . . WE HAVE WHAT IT TAKES!

★ ROAD STONE ★ BASE STONE ★ DRAINFIELD STONE ★ WASHED SAND ★ PEA STONE ★ FILL DIRT

PHONE 475-1941

Or after 4 p.m. (313) 498-2866

Located 4 Miles North of Chelsea M-52 and ROE ROAD

PIT HOURS: 8 to 5 Mon. thru Fri. 8 to 12 Sat.

Thinking CARPET? Think SCHNEIDER'S

Visit the wonderful world of carpeting at Schneider's, one of the area's finest, full-service carpet stores, conveniently located in West Ann Arbor on Wagner Road between Jackson and Liberty.

Schneider's carries a broad selection of quality, name-brand carpets at prices consistently among the lowest in the entire area. Try us.

662-9332

SCHNEIDER-CARPET CO.

745 S. WAGNER RD. ANN ARBOR

you've got a lot of money under one roof

Machinery . . . planting, cultivating, harvesting, feed inventory, livestock or stored grain are often protected under one roof or in a building complex. A real danger to all that personal property exists should disaster like fire or wind strike. Find out the reasonable cost for effectively insuring your farm personal property.

Daye Rowe

Visit us or give us a call. We're in Chelsea at 107 1/2 South Main Street. Phone 475-8065.

FARM BUREAU INSURANCE GROUP

FARM BUREAU MUTUAL

Fall Super Savings at CHELSEA AUTOMOTIVE, INC.

S-K TOOLS 5 PIECE OPEN END WRENCH SET REG. 11.98 8.45 1705-77	SKILSAW 16" CHAIN SAW INCLUDES ACCESSORIES REG. 159.99 139.99 1 YEAR WARRANTY 1816	SIGNAL STAT 2 1/2 LB. REFILLABLE FIRE EXTINGUISHER 14.56 VALUE 8.99 762	CYCLONE HEADERS REG. 79.95 59.95 SET 750	SPEEDOSTAT PC CRUISE CONTROL 111.95 VALUE 59L08X238 59L08X79A 99.50	BARS LEAKS SEALANT 5 1/2 OZ. CAN STOPS RUST AND CORROSION REG. 1.25 89¢ R-6
FOX CRAFT IMPACT DRIVER REG. 7.25 6.91 1040	SKIL 3/8 DRILL CORDLESS VARIABLE SPEED REVERSIBLE REG. 39.99 29.99 2002	HAWK TIMING LIGHT DC POWER 24.18 VALUE 15.95 719	UNIVERSAL WASHER PUMP 9.90 VALUE 8.42 P50	SUN SUPER TACH TACHOMETER REG. 42.98 39.98 CP 7901	WATER PUMP LUBE REG. 1.25 69¢ 0-8
S-K TOOLS 20 PIECE SET 3/8" DRIVE SOCKET REG. 35.98 24.89 4520-77	SKILSAW POWER SAW 7 1/4" BLADE REG. 44.99 34.99 574	HAWK DWELL DWELL TACH METER REG. 20.60 12.75 742	TUFF-BUILT FOG LAMP AMBER REG. 25.40 14.95 9-60080	TUFF-BUILT DRIVING LIGHT CLEAR REG. 25.40 14.95 9-60081	MR. GASKET SPLASH GUARD STAINLESS STEEL REG. 2.40 1.99 1945
CHAMP ITEM 8 PIECE SET DRILL BIT SET REG. 7.03 5.95 91652	SKILSAW POWER SAW 7 1/4" BLADE REG. 44.99 34.99 574	SCHUMAKER BATTERY CHARGER 1 AMP 11.63 VALUE 8.95 CM-1	TUFF-BUILT MOUNTING BRACKET REG. 6.58 4.95 FOR DRIVING AND FOG LAMPS 24-82080	TUFF-BUILT RELAY WIRING AUXILIARY LIGHT REG. 11.98 WIRING KIT 8.95 98-60080	MR. GASKET SPI ASH GUARD STAINLESS STEEL REG. 4.40 3.49 1946
PARTS PLUS CREEPER REG. 13.99 8.99 MODEL LD	FOX CRAFT 1 1/2 TON FLOOR JACK REG. 89.95 79.95 HF3 30	BELDEN OUTDOOR 25 FT. EXTENSION CORD 9.05 VALUE 5.95 777031	TUFF-BUILT RELAY WIRING AUXILIARY LIGHT REG. 11.98 WIRING KIT 8.95 98-60080	SPORT GRIP STEERING WHEEL COVER REG. 4.75 3.49 58-0450B 58-0450T 58-0450Y 58-0450R	CHAMP ITEM HAND SPOTLIGHT REG. 13.43 8.95 7-810
FOX CRAFT 2 TON JACK STAND REG. 7.95 6.97 each JS20	FOX CRAFT 1 1/2 TON JACK STAND REG. 4.75 3.99 each JS15	BELDEN TROUBLE LIGHT 25 FT. REG. 16.60 7.99 7925	FOX CRAFT FENDER COVER REG. 5.25 4.65 FC 10	SPORT GRIP STEERING WHEEL COVER REG. 4.75 3.49 58-0450B 58-0450T 58-0450Y 58-0450R	GOODALL TOW ROPE BREAKING POINT 6500 LBS. 12 1/2 FEET LONG 9.96 VALUE 7.96 18012

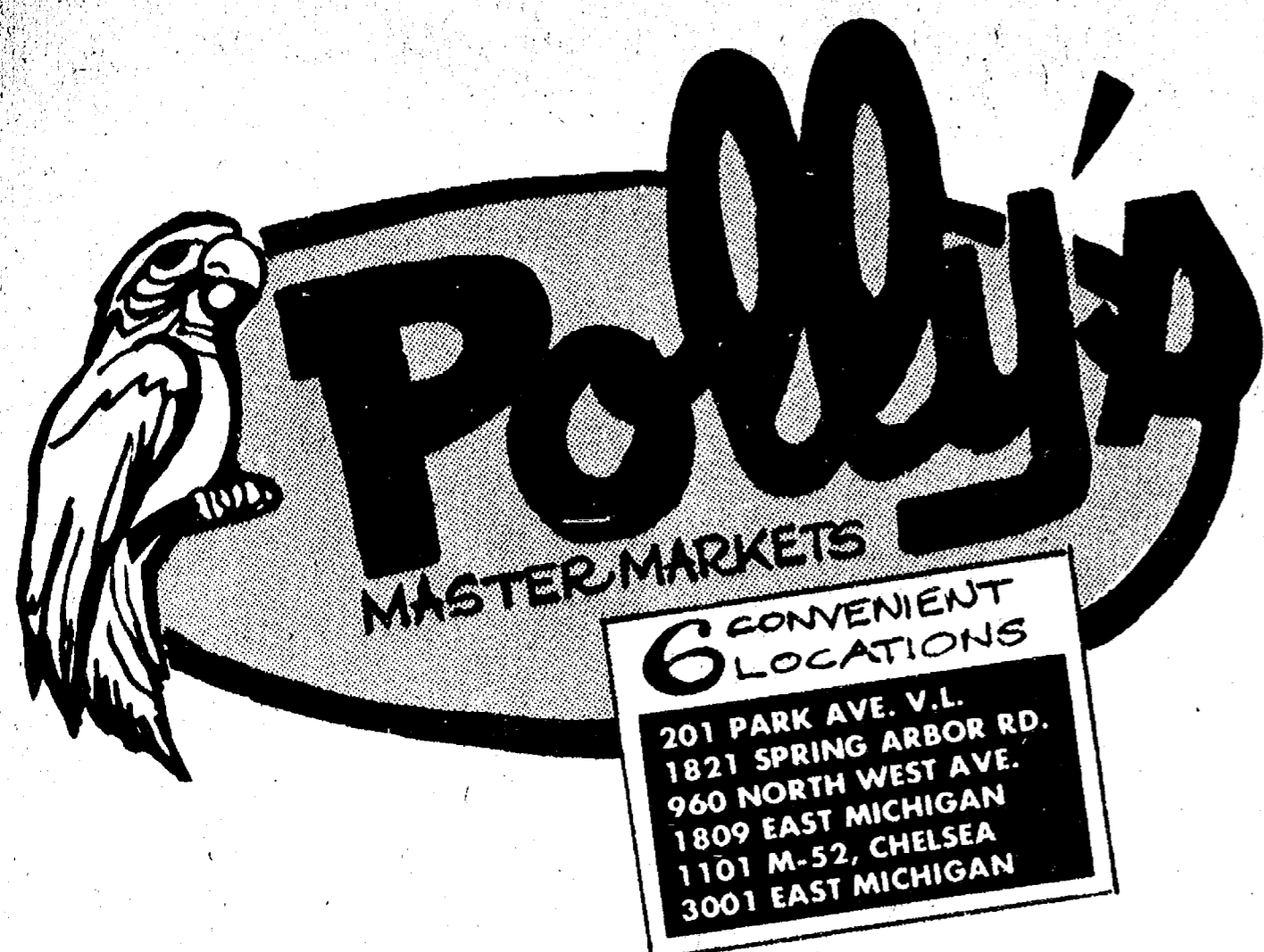
DISCOUNT COUPON PLASTIC COATED PLAYING CARDS 69¢ VALUE 19¢ LIMIT 5	DISCOUNT COUPON 3/4" x 60 YDS MASKING TAPE 79¢ VALUE 29¢ LIMIT 4	DISCOUNT COUPON PRE-MIX WINDSHIELD SOLVENT 1 GALLON REG. 1.29 79¢ G61 LIMIT 2	DISCOUNT COUPON RADIATOR FLUSH 16 OZ. CAN 1.45 REG. 79¢ 0-19 LIMIT 2	DISCOUNT COUPON PERMA BOND SUPER GLUE 1.98 VALUE 99¢	DISCOUNT COUPON CHIEFTAIN ELECTRICAL TAPE REG. 40' 29¢ 30758K LIMIT 4
DISCOUNT COUPON MILLIONS SOLD AT \$1.49 BIC LIGHTER 49¢ LIMIT 2	DISCOUNT COUPON NATIONAL SEMI-CONDUCTOR CALCULATOR Adds, Subtracts Multiplies & Divides Works the Problem Exactly as you Say It. MODEL 650 9.95 VALUE 3.66 LIMIT 1	DISCOUNT COUPON AVIEX STARTING FLUID 11 OZ. 1.20 REG. 98¢ DSF12-24 LIMIT 2	DISCOUNT COUPON GUNK CLEANS ENGINE 16 OZ. SPRAY REG. 2.15 89¢ EBI LIMIT 2	DISCOUNT COUPON GO JO HAND CLEANER INCLUDES DISPENSER REG. 2.99 1.95 1212 LIMIT 2	DISCOUNT COUPON free flying saucer w/10.00 PURCHASE
DISCOUNT COUPON TRASH BAG LINERS 30 GALLON 8 COUNT 1.39 VALUE 39¢ LIMIT 3	DISCOUNT COUPON RAY-O-VAC FLASHLIGHT BATTERY REG. 31¢ D-SIZE 24¢ 6D-2 NO LIMIT	DISCOUNT COUPON JEFFREY ALLEN SNOW SCRAPER GUARANTEED UNBREAKABLE REG. 72¢ 49¢ JAB41 LIMIT 2	DISCOUNT COUPON GUMOUT 12 OZ. CAN REG. 86¢ 79¢ 7518 LIMIT 2	DISCOUNT COUPON SNOW MOBILE OIL REG. 11.88 CASE OF 12 9.75 CASE 450 Q	DISCOUNT COUPON VALVOLINE MOTOR OIL WORLD'S FINEST EVERYDAY LOW PRICE 90¢ CASE OF 24 REG. 21.60 CASE OF 24 ON SALE 12.98 54¢ 141

BANK AMERICARD OR MASTER CHARGE WELCOME

CHELSEA AUTOMOTIVE

1414 S. MAIN, CHELSEA
 PHONE 475-9106
 SALE ENDS SUNDAY, NOV. 20

Parts Plus.



get to know us...
WE CAN HELP YOU SAVE ON YOUR FOOD BILL!

Open Daily 8 to 10
Sunday 9 to 9

- ★ **QUALITY PRODUCE**
- ★ **QUALITY MEAT**
- ★ **COLD BEER, WINE, LIQUOR**
- ★ **LOTTERY TICKETS**
- ★ **SIDES OF BEEF**
- ★ **FRUIT BASKETS**
- ★ **DRY CLEANING**
- ★ **PHOTO PROCESSING**
- ★ **VARIETY AT LOW PRICES**



Seasons Eatings!



Polly's

MASTER MARKETS

6 CONVENIENT LOCATIONS

201 PARK AVE. V.L.
1821 SPRING ARBOR RD.
960 NORTH WEST AVE.
1809 EAST MICHIGAN
1101 M-52, CHELSEA
3001 EAST MICHIGAN



SAVE 20¢ WITH IN-STORE COUPON
CAMPBELL'S

TOMATO SOUP

6 10½-OZ. CANS \$1



7-UP
64-OZ. N.R. 79¢

SAVE 26¢ WITH IN-STORE COUPON
NABISCO

PREMIUM SALTINES

16-OZ. 49¢

HOLSUM
BROWN and SERVES
3 12-CT. PKGS. FOR \$1

POLLY'S QUALITY WHITE

BREAD



4

20-OZ. LOAVES FOR

\$1.00

SAVE 17¢ WITH IN-STORE COUPON
BETTY CROCKER

CAKE MIX

18-OZ. WT. 49¢



SCOT LAD VEGETABLES
Early June Peas, Cream Style Corn,
Whole Kernel Corn, Cut Green Beans

5 16-OZ. CANS \$1



SAVE 40¢ WITH IN-STORE COUPON
QUEEN OF SCOT

SHORTENING

3-LB. PKG. \$1.19

SAVE 41¢ WITH IN-STORE COUPON
ROYAL

GELATIN

4 99¢ 6-OZ. FOR

SEALTEST
CHIP DIPS

8-OZ. WT. 39¢

BIG "J"
POTATO CHIPS

14-OZ. WT. 79¢



SAVE 16¢ WITH IN-STORE COUPON
SCOT LAD

FLOUR

5-LB. BAG 43¢

SAVE 40¢
NEW! FAMILY SIZE
DAWN

48-OZ. \$1.49



SAVE 17¢ WITH IN-STORE COUPON
SCOT LAD MARGARINE

3 1-LB. QTRS. \$1



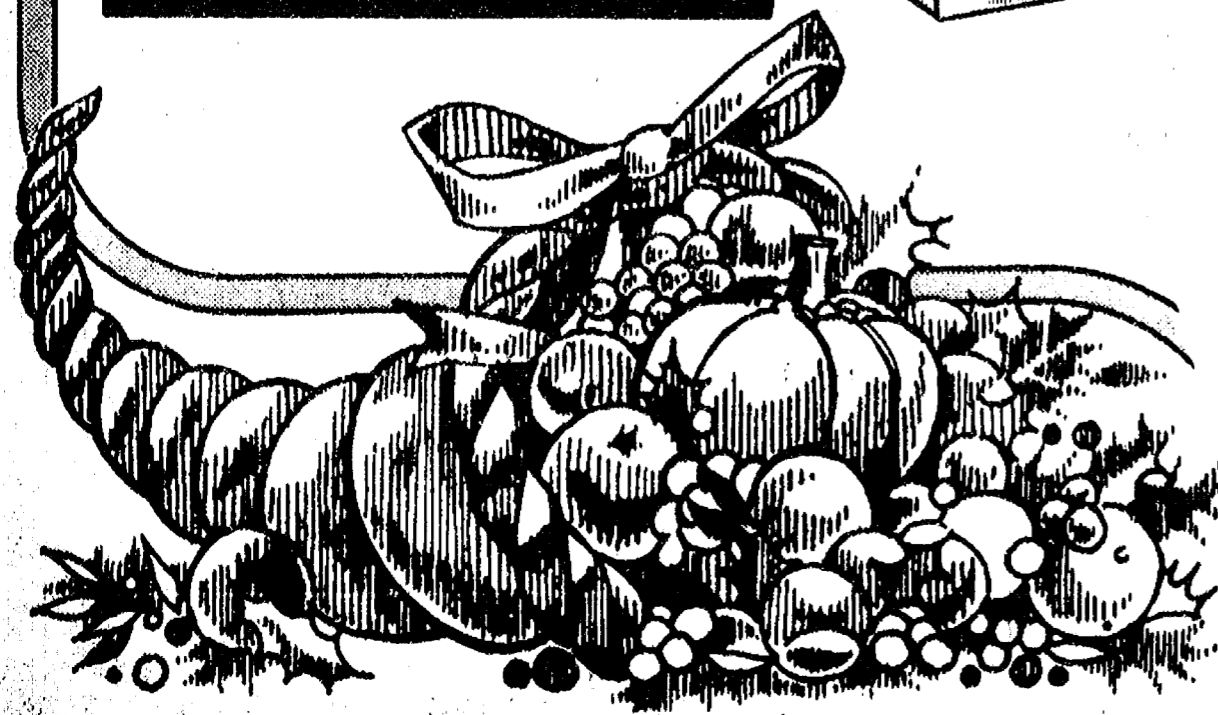
SAVE 13¢ WITH IN-STORE COUPON
SCOT FARM

CREAM CHEESE

8-OZ. WT. 45¢

25¢ OFF LABEL
OXYDOL DETERGENT 84-OZ. \$1.99
WIN SCHULER
BAR SCHEEZE 8-OZ. 69¢
GORTONS
MINCED CLAMS 6-OZ. 83¢
OCEAN SPRAY
CRANBERRY SAUCE 16-OZ. 37¢
KRAFT
MARSHMALLOW CREME 13-OZ. 69¢

REALEMON
LEMON JUICE 32-OZ. 69¢
3-DIAMONDS
MANDARIN ORANGES 2 11-OZ. CANS 89¢
UNSULPHURED
GRANDMAS MOLASSES 12-OZ. 75¢
KEEBLER C.C., DROPS or
RICH n' CHIPS 14-OZ. 89¢
DEANS
SOUR DELITE 12-OZ. 37¢



SWIFT PREMIUM

BUTTERBALL TURKEYS

LB. **68¢**

12-LBS. AND UP

LAND O'LAKE'S OR MARVEL
GRADE "A" BUTTER-BASTED
TURKEYS

18-LBS. AND UP "TOMS"

LB. **58¢**

10 TO 16 LBS. "HENS"

LB. **63¢**

TYSON MIXED

FRYER PARTS

LB. **38¢**



100% PURE BEEF
HAMBURGER
LB. **68¢**
U.S.D.A. CHOICE
BONELESS BEEF
CHUCK ROAST
LB. **98¢**

U.S.D.A. CHOICE
STEWING BEEF
LB. **98¢**

ECKRICH ALL MEAT
HOT DOGS
LB. PKG. **98¢**

U.S.D.A. CHOICE BEEF
RIB ROAST
5TH THRU 7TH RIB
LB. **\$1 38**

DINNER BELL WAFER
SLICED MEATS
3-OZ. **48¢**

U.S.D.A. CHOICE BEEF
BONELESS
ENGLISH ROAST
LB. **\$1 18**

U.S.D.A. CHOICE BEEF
BOSTON ROLLED ROAST
LB. **\$1 28**

BOB EVANS
SAUSAGE
1-LB. ROLL **\$1 48**

MARVEL
TURKEY ROAST
2-LB. PKG. **\$2 48**

- CAPONS
- ROASTING HENS
- OYSTERS

Available at all
Polly's Markets!

FOSTER
DUCKS
88¢

SCOT PRIDE PATTIED
HAMBURGER
2½-LB. BOX **\$1 98**

ECKRICH SLICED
BOLOGNA
LB. **\$1 38**

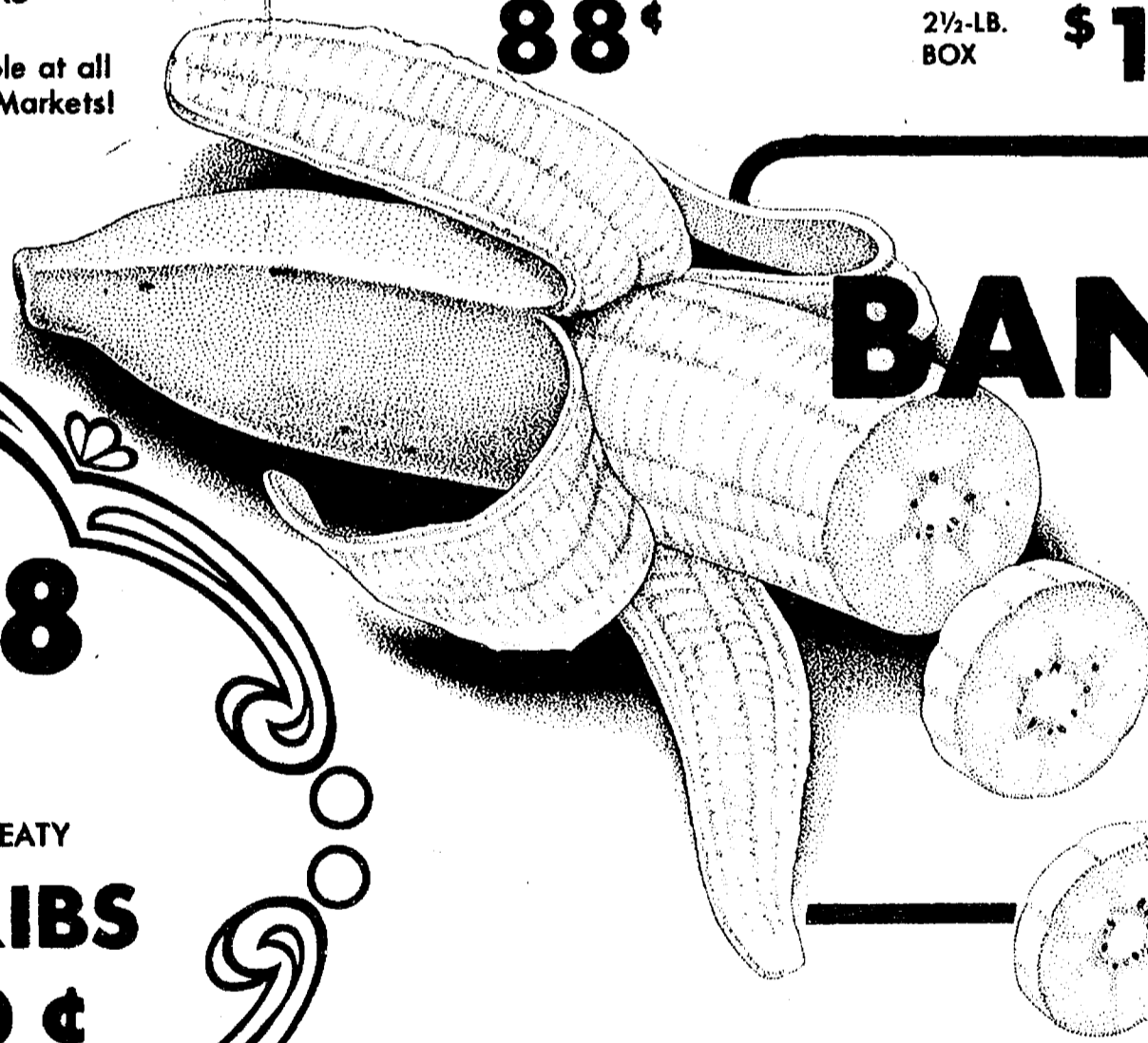


DINNER BELL BONELESS HAM

LB. **\$1 58**

HOLLY RIDGE SLICED
BACON
12-OZ. PKG. **88¢**

FRESH LEAN and MEATY
SPARE RIBS
LB. **98¢**



GOLDEN RIPE BANANAS

LB. **19¢**

BUY 2 • SAVE 30¢ WITH IN-STORE COUPON BANQUET PUMPKIN or MINCE PIES

20-OZ. **44¢**

BIRDS EYE COOKED SQUASH	4 12-OZ. FOR	\$1 00
BRILLIANT LARGE COOKED SHRIMP	10-OZ. PKG.	\$2 69
QUEEN of SCOT BRUSSEL SPROUTS	10-OZ. PKG.	39¢
LADY BORDEN "DELUXE" ICE CREAM	QTS	79¢
BORDEN STIX ICE CREAM BARS	6-PK.	55¢

SAVE 30¢ WITH IN-STORE COUPON
HOLIDAY
MIXED NUTS
2-LB. PKG. **\$1 99**
FLORIDA
TANGERINES
18 79¢



TASTY
CRANBERRIES

1-LB. BAG **39¢**

CRISP
GREEN PEPPERS or CUCUMBERS

5 for **\$1 00**

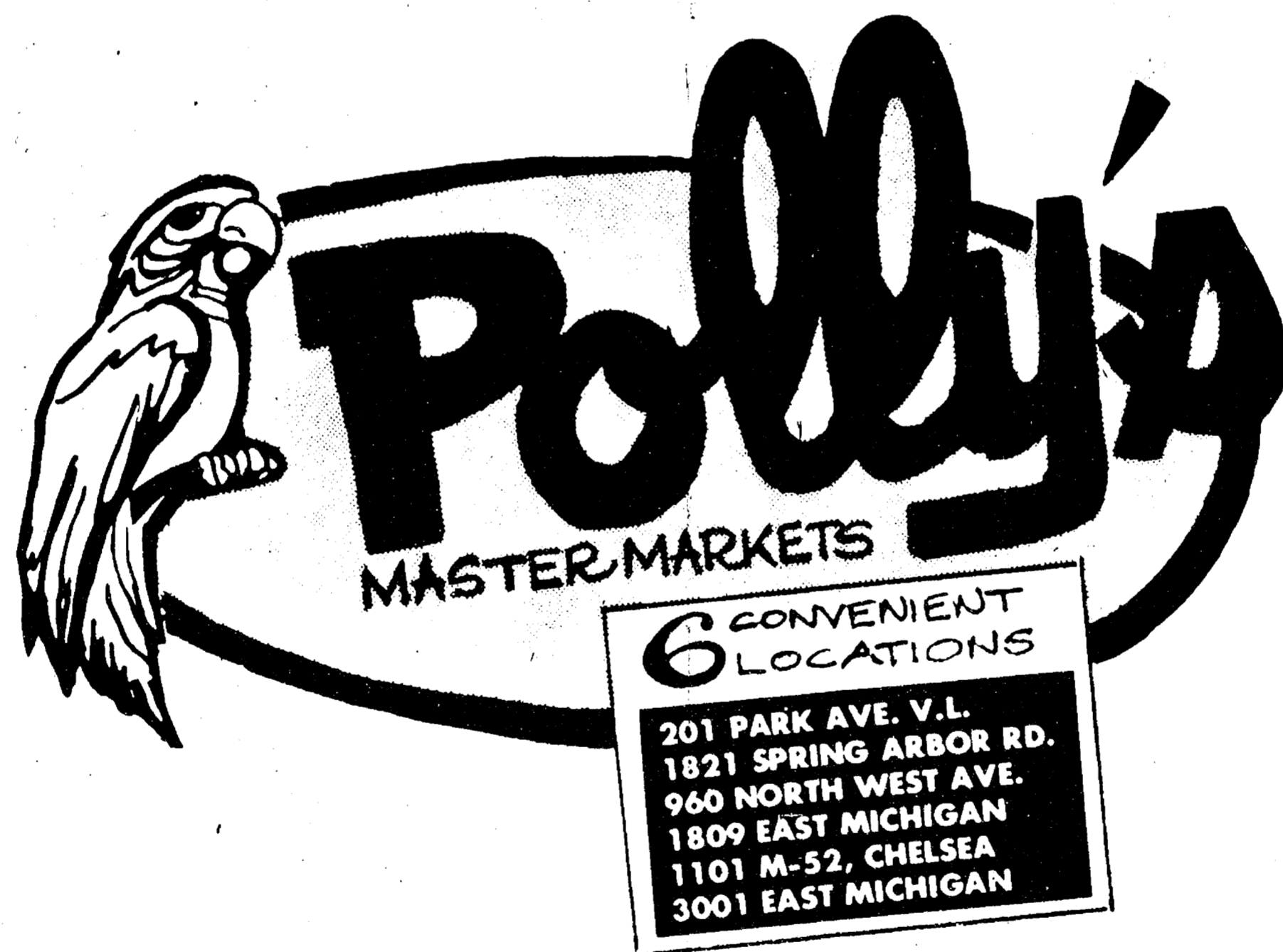
TOKAY RED GRAPES

LB. **44¢**



Thank You

FOR SHOPPING AT...



WHERE WE ARE
HAPPY TO.....

save YOU MONEY!